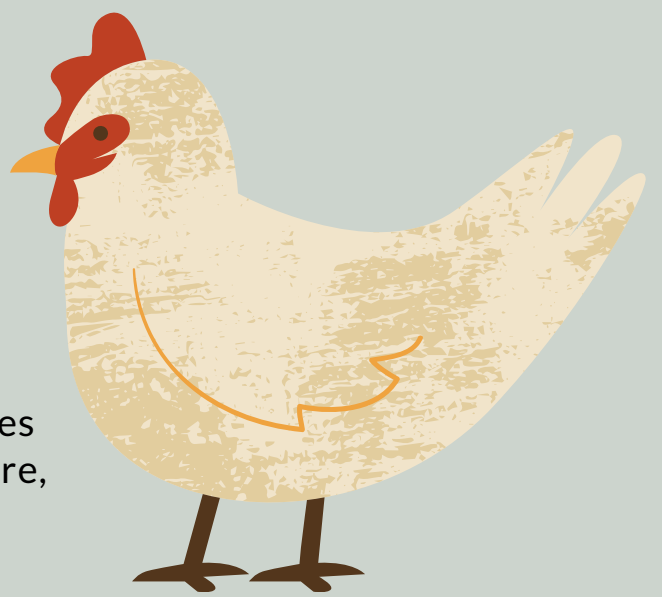


PREVENT FLOOR EGGS



Floor laying is habitual, and once it becomes routine, there is no way to stop it. Therefore, good nest setup and maintenance is necessary from the very beginning.

1 PROVIDE ENRICHMENT

Perches and platforms teach pullets how to navigate a laying house where they will have to jump onto slats to reach the nesting area.

2 TRANSITION PULLETS EARLY

Move pullets to the laying house approximately two weeks before the onset of lay so that they can adjust to their new surroundings and learn the location of feed and water.

3 OPEN NESTS LATE

By waiting until you see the first egg has been laid, birds learn that the nest is for nesting, not for resting.

4 KEEP NESTS COMFORTABLE

Nests should have soft substrate, be dark, and be readily available. Large nest boxes with comfortable nesting material is welcoming to hens.

5 KEEP BIRDS HEALTHY

Achieve and maintain the appropriate body condition throughout the rearing and laying process. Good health decreases floor eggs, diseases, and leg health issues.

6 KEEP LITTER LOW

Litter is necessary for welfare, but too much litter encourages floor eggs. Keep litter between 1-2" prevents it from being scratched into a nest.

7 PICK UP THE EGGS

Some floor eggs are bound to happen, and hens are encouraged to lay where other eggs are present. Picking them up as soon as possible discourages other hens from laying on the floor.

