

HEATRITE™

NEW
Aurora IR
Brooder

Additional Headroom Included.

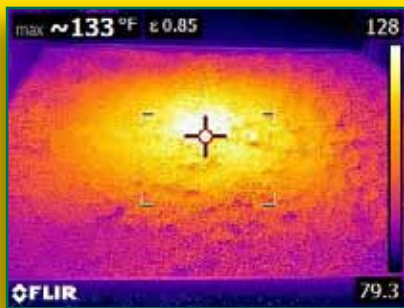
The **Aurora IR Brooder**, only from VAL-CO®, was designed to help growers get vehicles through their houses between flocks, without getting in the way. At the same time, the Aurora IR Brooder uses infrared heating technology to quickly and efficiently warm the chicks and floor rather than wasting heat on the air that rises above the brooding area.

Features and Options:

- At just *under 11"* (28 cm), Aurora IR provides extra clearance throughout the house
- 34" canopy (86 cm) available in either Aluminum or Galvanized
- BTU/Hr rating to 40,000 (10,100 k/cal)
- Ships fully assembled
- Liquid Propane (LP) or Natural Gas (NG)
- Ignition options include the horizontal pilot and the pilot-free direct spark
- Control methods – individual, zone, whole house
- Three individual brooder control options – snap action, zone, direct spark

Innovative ideas build better brooders:

- **Low profile design** – being under 11" (28cm) in height, it provides extra headroom during cleanout between flocks.
- **Fully assembled** – just connect to gas and hang.
- **Fewer brooders, more efficient heat per brooder** – Glow Radiant infrared brooders warm chicks and floor without wasting energy on air.
- **Easier maintenance** – Radiant brooders with unique horizontal pilot construction stay much cleaner.
- **Even heat** – unique leveler brackets quickly adjust canopy in two directions – side-to-side and front-to-back.
- **Durability** – specialized steel components promote heat efficiency and prevent corrosion.



The widespread heat pattern that the Aurora IR Brooder provides, quickly and efficiently heats your birds and the floor, without wasting any heat on the air.



Performance You Can Count On



Heat-Rite Brooder Specifications*

PART #	DESCRIPTION
470823	Conical, NAT, 7" W.C., Alum
470824	Conical, LP, 11" W.C., Alum
470826	Conical, NAT, 7" W.C., Zone, Alum
470827	Conical, LP, 11" W.C., Zone, Alum
470828	Conical, NAT, 7" W.C., DSI, 24VAC, Alum
470829	Conical, LP, 1" W.C., DSI, 24VAC, Alum
470849	Conical, NAT, 7" W.C., Galv
470850	Conical, LP, 11" W.C., Galv
470851	Conical, NAT, 7" W.C., Zone, Galv
470852	Conical, LP, 11" W.C., Zone, Galv
470853	Conical, NAT, 7" W.C., DSI, 24VAC, Galv
470854	Conical, LP, 1" W.C., DSI, 24VAC, Galv

Aurora IR (Infrared)



CAPACITY:

40,000 BTU/Hr
10,080 k/cal

DIMENSIONS:

WIDTH: 34.4" - 87.4 cm
HEIGHT: 10.8" - 27.4 cm

*Technical specifications may change. Consult your VAL-CO representative for details.

Individual Brooder Control Options

Direct Spark



Use less fuel with no burning pilots. Avoid unnecessary heat when you don't need it. A low voltage electrical source instead of burning pilots reduces maintenance.

Robertshaw Zone Control



Zone controls on individual brooders provide consistent temperatures to be set for a specific area. Brooders can be operated by a brooder zone control panel or a Horizon® Whole House Controller™.

S.I.T. Snap Action Control



S.I.T. combines a snap-action thermostat with 100% safety cut-off valve. Brooding temperatures can be set individually.



Performance You Can Count On

www.val-co.com

North America:

Phone: 800-99VALCO (800-998-2526)

Fax: (+1) 419-678-2200

E-mail: sales@val-co.com

International:

Phone: (+1) 419-678-8731

Fax: (+1) 419-678-2200

E-mail: intl.sales@val-co.com