

# Fresh Ideas in Ventilation Technology.

An Investment In Value



Because your future depends on the health of your livestock, the quality of their environment can't be compromised – especially where ventilation and air quality are concerned. Even your equipment and buildings benefit from a ventilation system you can depend on. That's why behind the healthiest herds, flocks and profitable operations, you'll find superior ventilation products manufactured by VAL-CO®, the agribusiness ventilation system pioneer.

## Automatic Air Replacement Fresh Air Inlets

The heart of a total ventilation system



### Design Features:

- Completely automatic for low maintenance air distribution year round – set them once and forget about them
- Automatically controls air velocity and volume according to fan speed, confinement conditions and prevailing weather
- Unique "Biflo" design allows draft-free air distribution through the confinement area
- Air replacement is gentle, even and fast – reducing the amount of fan operation
- Counter weighted valve assemblies automatically close when fans stop, eliminating heat loss and back drafts
- Inlet openings can be minimized or even closed during severe weather with the VAL-CO "Lock Tab System"
- Optional clad protection

### Construction:

- One-piece single molded construction of tough, corrosion-resistant rigid polystyrene
- Durable, long lasting and aesthetically pleasing
- Available in sizes to fit your needs: 1200, or 2400 cfm per unit
- Easy to install
- Low maintenance

Model	CFM	Rough Opening
I306-Q2*	1200	12-7/8" x 22-5/8"
I310-Q2*	2400	16-1/2" x 33-3/4"

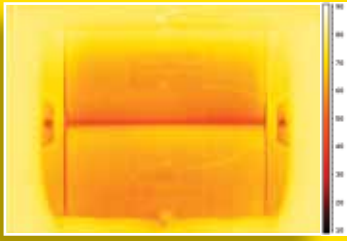
\* When ordering with the clad-covered valve add "C" behind the model number



Performance You Can Count On



Model	CFM	Rough Opening
1406P-Q2	1400	16-1/2" x 23-1/2"
1410P-Q2	2700	21-3/4" x 32-1/4"



Performance at 0° F

### Thermal Tested:

The Power-Flo Ceiling Inlets demonstrated superior results when tested in a certified laboratory under controlled and monitored conditions over a 60° temperature gradient of -30° F through 30° F.

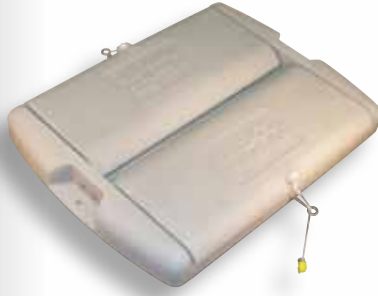
Model	Description
812210	24" Chimney w/ Dome
812240	24" Chimney Complete w/ Dome, Bird Netting & Flashing
812310	36" Chimney w/ Dome
812360	36" Chimney Complete w/ Dome, Bird Netting & Flashing



Performance You Can Count On

www.val-co.com

## Low Maintenance Fresh Air Ventilation Power-Flo Ceiling Inlets



The Fresh Air Ceiling Inlet System from VAL-CO® is the heart of a total ventilation system. Our superior design is cost effective, durable and easy to install and clean.

### Design Features:

- Operated by a power actuator and regulated by your ventilation control program
- Controls air velocity and volume according to fan speed(s) and temperature for optimum animal comfort
- Unique "Biflo" design allows draft-free air distribution throughout the confinement area
- Reduced fan operation results in added cost savings due to precise, fast and gentle air replacement
- Unique design eliminates heat loss and back drafts

### Construction:

- Rugged, seamless, rotationally molded construction meets or exceeds the performance of foam inlets
- Made of tough, non-corrosive polyethylene
- Available in 1400 or 2700 cfm sizes to fit your design needs
- Stands up to high pressure cleaning
- Complete with control cords, hardware and insulation stop

## Natural Flow Chimneys Consistent and Precise Control

### Design Features:

- Energy savings
- Outer skin constructed of painted aluminum for extra durability against the elements
- Easy installation
- Fully insulated chimney shaft and damper prevent condensation and help regulate house temperature
- Top and bottom caps provide structural integrity
- Construction is self squaring
- 7/8" insulated, mechanically adjusted damper precisely controls the amount of airflow required with included pulleys and cords

### Construction:

- Attractive one-piece molded polyethylene chimney dome
- Sturdy 10 gauge structural aluminum dome mounting brackets
- White insulated UV resistant surfaces
- Operating cable kit included
- Rust-resistant hardware
- Options include bird netting, bird spike and flashing
- Optional 4' extension for the 24" chimney



Call your local **VAL-CO** representative or distributor for more information on these and our other fine products.

### North America:

Phone: 800-99VALCO (800-998-2526)

Fax: (+1) 419-678-2200

E-mail: sales@val-co.com

### International:

Phone: (+1) 419-678-8731

Fax: (+1) 419-678-2200

E-mail: intl.sales@val-co.com