

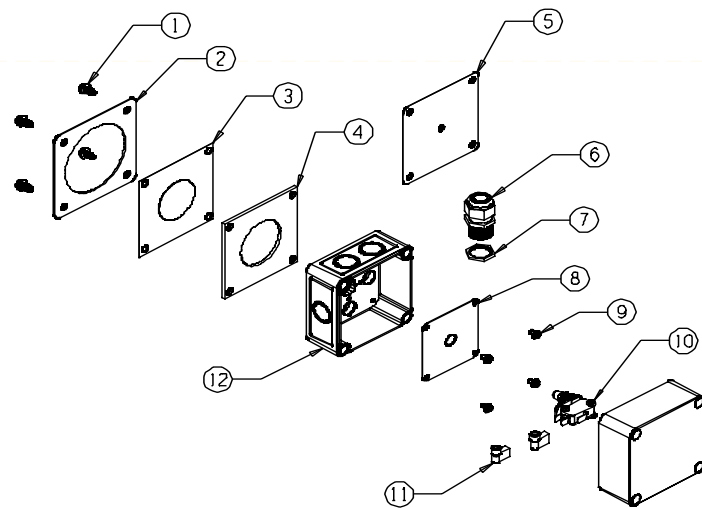


Quick Sheet Instructions

Boot Safety Switch

#730980

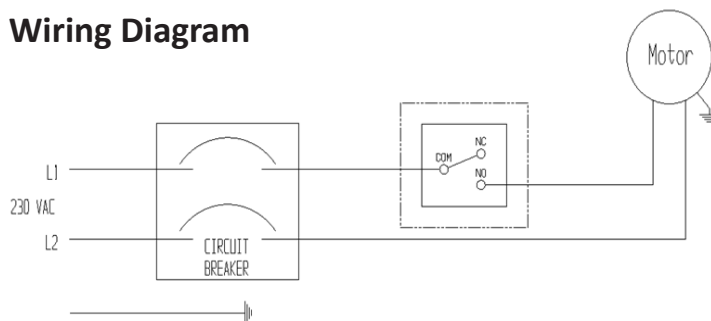
Boot Safety Switch Exploded Drawing



Packing List

| KEY | PART # | DESCRIPTION | QTY |
|-----|--------|----------------------------------|-----|
| 1 | 012725 | #12 X 1/2" Screw | 4 |
| 2 | 730985 | Safety Switch Diaphragm Retainer | 1 |
| 3 | 730983 | Safety Switch Diaphragm Assembly | 1 |
| 4 | 730982 | Safety Switch Neoprene Seal | 1 |
| 5 | 730986 | Safety Switch Template | 1 |
| 6 | 750030 | Straight Thru Gommel | 1 |
| 7 | 420473 | 1/2" Conduit Nut | 1 |
| 8 | 730981 | Safety Switch Base Plate | 1 |
| 9 | 011380 | 8-32 x 3/8" Pan Head Screw | 4 |
| 10 | 730484 | Push Button Snap Switch | 1 |
| 11 | 470542 | 90 Degree Quick Connect | 2 |
| 12 | 450779 | Square Enclosure | 1 |

Wiring Diagram

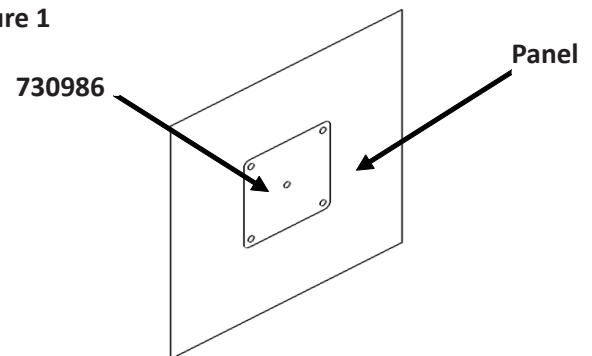


The Boot Safety Switch can be used to stop most feeding systems from running empty when pressure from the feed is no longer applied to the switch. When pressure is released from the switch, the feed motor will stop, preventing all the feed from emptying out of the feed system.

Installation Instructions

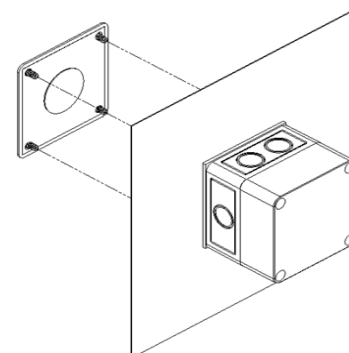
1. Use the #730986 Safety Switch Template to mark the hole locations onto the panel that you want the Boot Safety Switch mounted to. Use a 9/32" diameter drill to drill the 4 outside holes and a 2" hole saw to drill the center hole. (As shown below in Figure 1.)

Figure 1



2. Place the Neoprene Seal and Square Enclosure on the outside of the panel then place the Diaphragm and Diaphragm Retainer on the inside of the panel and secure with the (4) #12 screws. (As shown in Figure 2 below.)

Figure 2



North America:

Phone: 800.99VALCO (800.998.2526)

Fax: 419.678.2200

Email: sales@val-co.com

U:\MANUALS\990000\990032

JDS 11-8-2010

International:

Phone: (+1) 419.678.8731

Fax: (+1) 419.678.2200

Email: intl.sales@val-co.com