

Quick Sheet Instructions

Hopper Level Switch

#720111

The Hopper Level Switch control is designed for use with any free flowing, conveying feed system. The switch automatically starts and stops the fill system, accordingly, as the feed is or is not against the sensor.

To assure that no hoppers empty before the Control Unit hopper requires feed, the level switches (controls) may be placed in more than one hopper.

Assembly Instructions

1. Install the Hopper Level Switch closest to the Fill system motor and lower than the other Hopper Level Switches in if you are using multiple Hopper Level Switches. *This will ensure that the feed level will be lower in the other hoppers and will cause the system to start in order to maintain the feed level in every hopper and provide a reservoir of feed in the fill system in the case that another hopper calls for feed.*
2. Position the Feed Drop Tube to the center of the hopper to deliver feed near the top of the hopper and in front of the Hopper Level Switch. The drop tubes and switches should be positioned high in the other hoppers so they fill but do not overflow as shown in Figure 1 above.



For optimum performance, the feed drop tube should be placed five (5) inches higher than the top edge of the switch shield and at least one (1) inch in front of the switch shield. This will allow the feed to fill the hopper, overflow the sensor and activate the level switch.

3. Locate the best position for the level switch as shown in Figure 2 and explained above. Use a center punch and drill (2) 11/32" diameter holes through the panel of the hopper for the mounting bracket as shown in Figure 3. Use the bracket as a guide to determine the hole spacing. Secure using the included 5/16"-18 3/4" Hex Bolts and 5/16"-18 Lock nuts.
4. Slide the #720020 Hanger Bracket on the back side of the Level Switch Control Sensor onto the #720023 Mounting Bracket which you just secured to the side panel of the hopper.

The Hopper Level Switch control may be removed for cleaning.

Figure 1

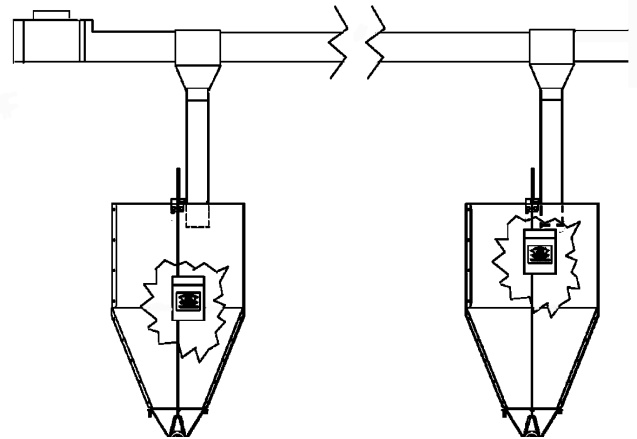


Figure 2

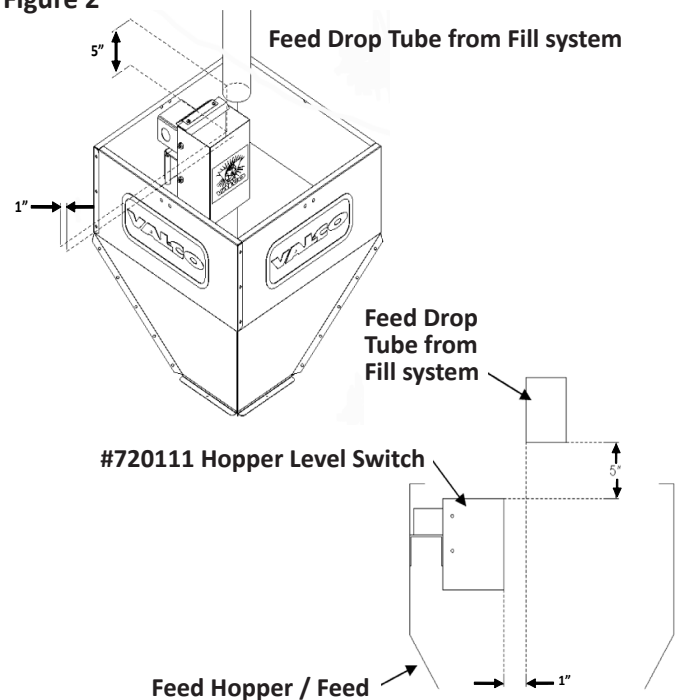
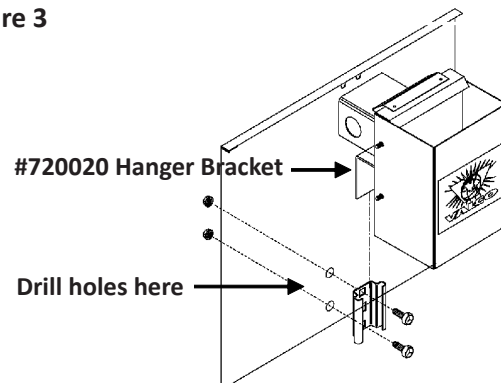


Figure 3





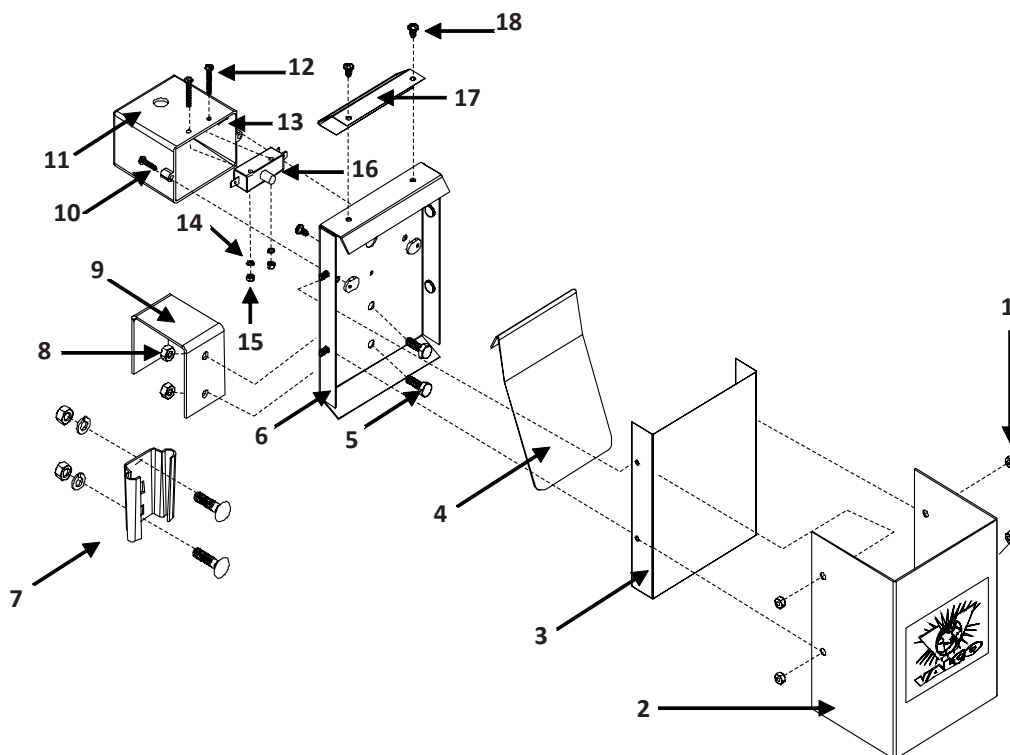
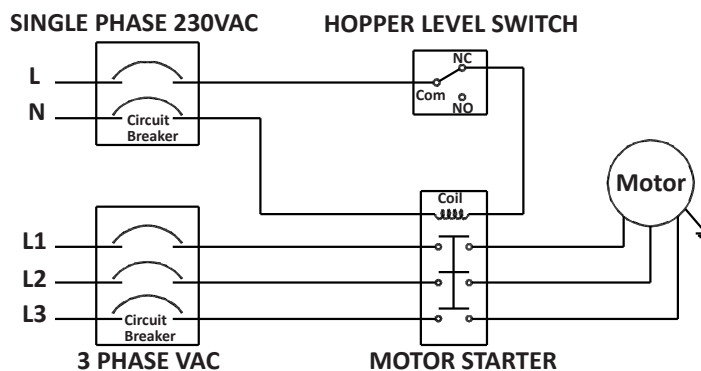
THIS UNIT SHOULD ONLY BE WIRED TO A VAL-CO™ DISCHARGE HEAD

WIRING DIAGRAM

WIRING MUST BE DONE BY A LICENSED ELECTRICIAN!

ALL LOCAL AREA CODES MUST BE FOLLOWED!

Wire all switches in parallel so any one switch can start the system.



#720111 - Parts List - pre-assembled

KEY	PART #	DESCRIPTION	QTY
1	012607	#10-24 Machine Screw Nut	4
2	720015	Switch Shield	1
3	720018	Diaphragm	1
4	720013	Switch Plate	1
5	010617	1/4" x 3/4" Hex Head Bolt	2
6	720019	Switch Body Assy	1
7	720023	Mounting Bracket w/hardware	1
8	012793	1/4"-20 Nylock Nut	2
9	720020	Hanger Bracket	1
10	010744	#6-32 x 5/8" Round Head Bolt	2

KEY	PART #	DESCRIPTION	QTY
11	720016	Electric Box	1
12	012570	#6-32 x 1" Round Head Machine Screw	2
13	713459	Spade Terminal Insulator (not visible)	1
14	012732	#6 Lockwasher	2
15	012731	#6-32 Machine Nut	2
16	720017	Snap Action Switch	1
17	720014	Switch Plate Retainer	1
18	012495	#8 x 3/8" Round Head Phillips Sheet Metal Screw	3

North America:

Phone: 800.99VALCO (800.998.2526)

Fax: 419.678.2200

Email: sales@val-co.com

U:\MANUALS\990000\990035

JDS 11/8/2010

International:

Phone: (+1) 419.678.8731

Fax: (+1) 419.678.2200

Email: intl.sales@val-co.com