

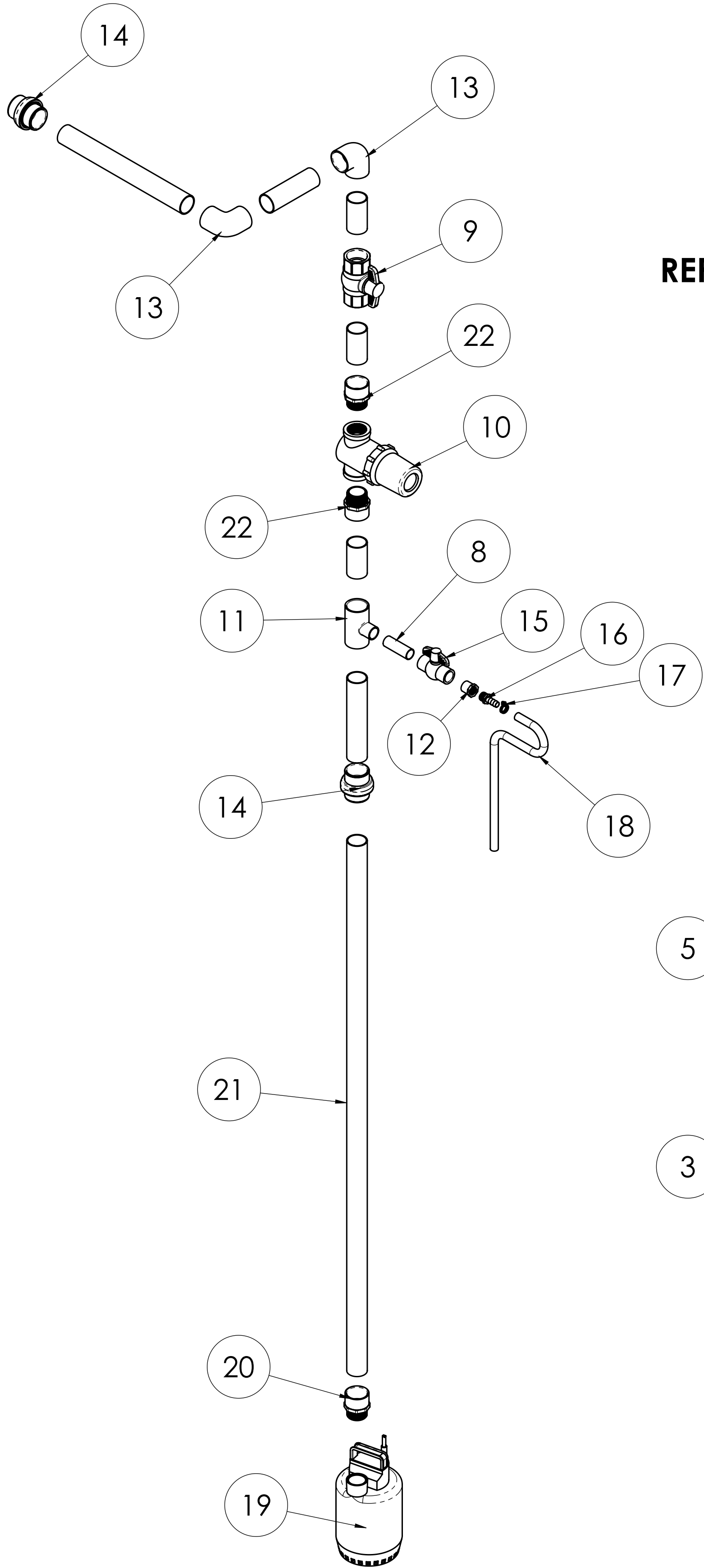
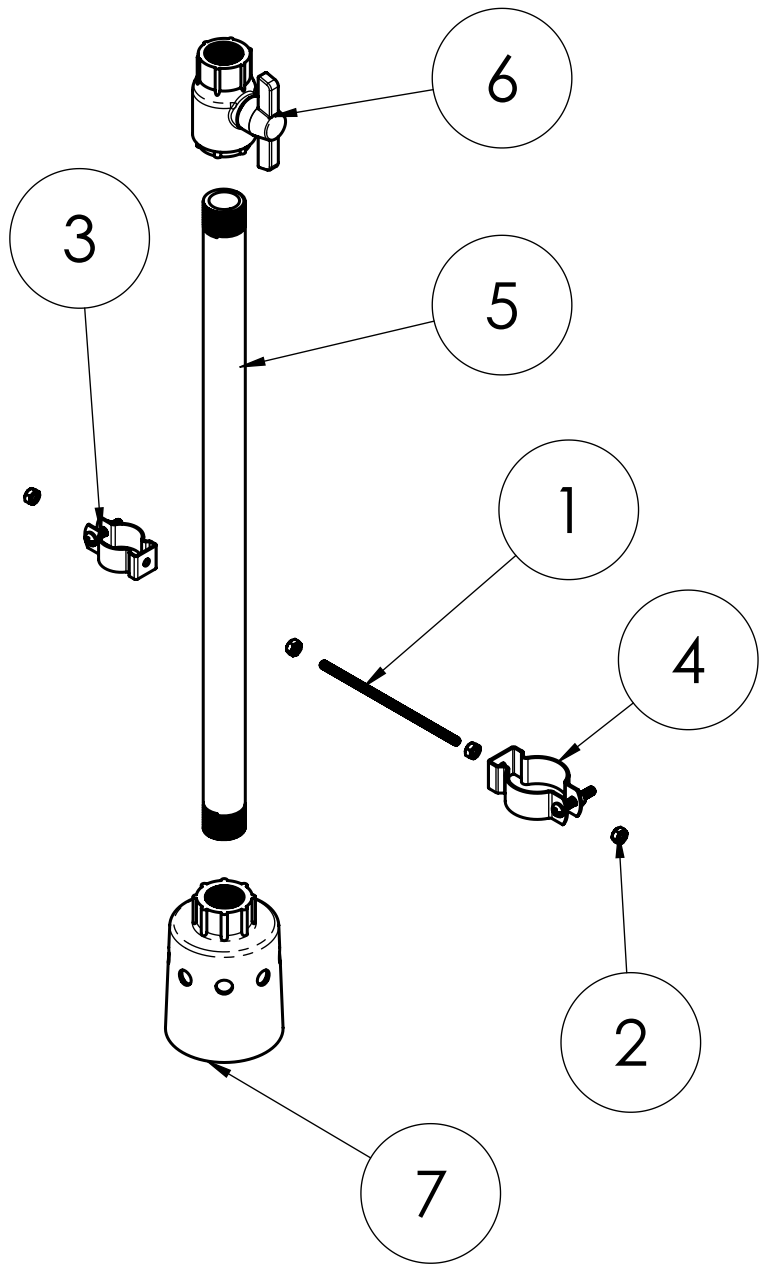
BILL OF MATERIALS

ITEM #	PART #	QTY	DESCRIPTION
1	813033	1	BASIN, PLASTIC, 18" X 30"
2	813035	1	COVER, BASIN, 18"
3	813030	1	ADAPTER, PVC, 4", SOCKET, MPT
4	813031	1	ELBOW, PVC, 4", STREET, DWV
5	813032	1	CAP, ADAPTER, PVC, 8" X 4"
6	813036	1	SEAL, PIPE, FLEXIBLE, 4"
7	412552	1	TUBE, WEIGHT, 4.50 X 8.38, PVC
8	813023	1	3/4" PLAIN PVC PIPE (3" LG)
9	PABV15	1	1-1/2" PVC BALL VALVE
10	PAF200	1	LINE FILTER FOR RECIRCULATING 6" PAD SYSTEM
11	PAT340	1	1 1/2" X 1 1/2" X 3/4" SXSXS
12	VT107	1	3/4" MALE SLIP X 1/2" FPT PVC
13	VT200	2	1 1/2" 90 DEGREE PVC ELL
14	VX150	2	1 1/2" PVC UNION
15	VV801	1	3/4" BALL VALVE SCHEDULE 80
16	VRP71	1	1/2" THREADED MALE HOSE CONNECTOR (1/2" BARB)
17	VRP500	1	1/2" HOSE CLAMP (USE W/ VRP77)
18	VRP77	3	1/2" ID YELLOW PVC DROP HOSE
19	SEE CHART	1	SUBMERSIBLE PUMP
20	SEE CHART	1	REDUCING MALE ADAPTER
21	VT194	1	1 1/2" PLAIN PVC PIPE (10 FT.)
22	PAA15	2	1 1/2" PVC MALE ADAPTER
23	813061	3	INLET COVER, PIPE
24	813063	2	GAP COVER, PIPE

ITEM #	ASSEMBLY PART NUMBER		
	813049	813041	813045
19	PAP30	PAP60	813060
20	PAA15	PAA15	PAA17

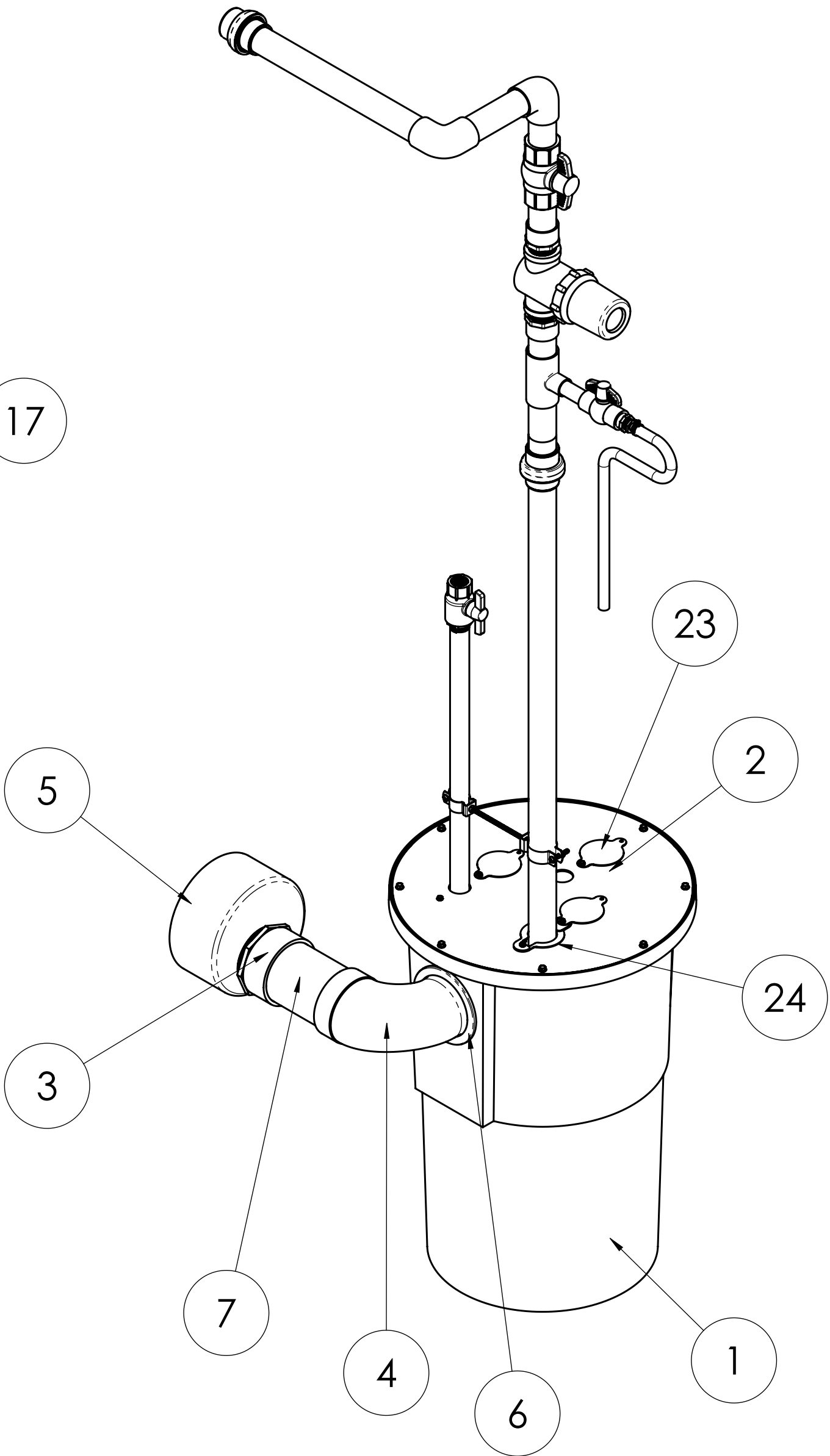
REPAIR PARTS: FLOAT KIT


BILL OF MATERIALS (813055) FLOAT KIT, WATER INLET			
ITEM #	PART #	QTY	DESCRIPTION
1	011230	1	STUD, 1/4-20 X 6", 316 SS
2	012679	4	NUT, HEX, 1/4-20
3	813053	1	CLAMP, PIPE, 1-5/16", SS
4	813054	1	CLAMP, PIPE, 1-7/8", SS
5	820000	1	NIPPLE, 1" X 24" LONG MNPT
6	820001	1	BALL VALVE, 1" FNPT
7	PAF150HF	1	FLOAT VALVE, 1" FNPT



OASIS RECIRCULATING
PAD SYSTEM WITH BASIN:
REPAIR PARTS
990283

REPAIR PARTS: END-FED HEADER KIT



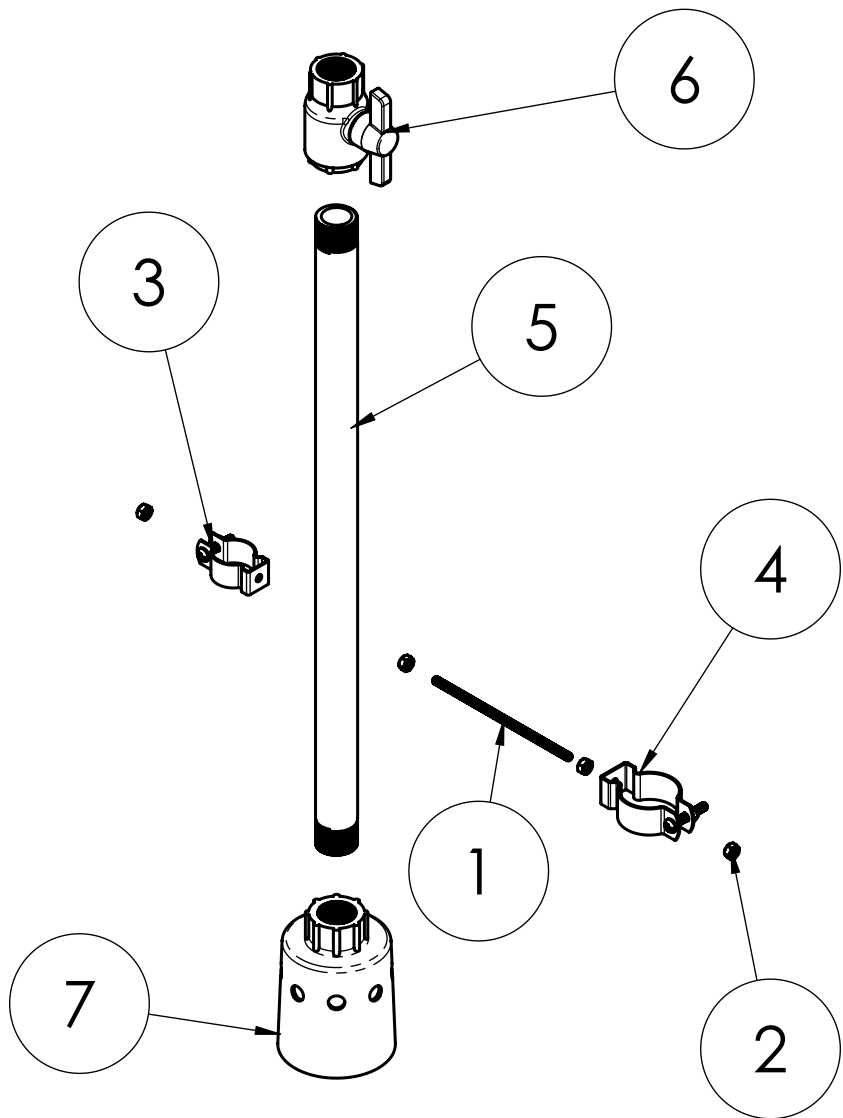
UNSPECIFIED TOLERANCES: 2 PLACE ±.060 3 PLACE ±.030 4 PLACE ±.010 HOLE DIA. ±.010 ANGULAR ±1°		 VALCO INDUSTRIES, INC. PO BOX 8 NEW HOLLAND, PA 17557	
DIMENSIONS ARE IN INCHES DIMENSIONS IN () ARE MILLIMETERS UNLESS OTHERWISE SPECIFIED. DO NOT SCALE			
DATE 4/26/23		DESCRIPTION	
DRAWN TRC		REPAIR PARTS	
CHECK		DESCRIPTION 2	
		COOL CELL, BASIN	
WEIGHT			
SCALE NTS		SHEET 1 OF 5	
		990283-RP	
		REV. -	

BILL OF MATERIALS (CENTER FED HEADER KIT)			
ITEM #	PART #	QTY	DESCRIPTION
1	813033	1	BASIN, PLASTIC, 18" X 30"
2	813035	1	COVER, BASIN, 18"
3	813030	2	ADAPTER, PVC, 4", SOCKET, MPT
4	813039	1	TEE, PVC, 4", SOCKET
5	813032	2	CAP, ADAPTER, PVC, 8" X 4"
6	813036	1	SEAL, PIPE, FLEXIBLE, 4"
7	412552	3	TUBE, WEIGHT, 4.50 X 8.38, PVC
8	813023	1	3/4" PLAIN PVC PIPE (3" LG)
9	PABV15	1	1-1/2" PVC BALL VALVE
10	PAF200	1	LINE FILTER FOR RECIRCULATING 6" PAD SYSTEM
11	PAT340	1	1 1/2" X 1 1/2" X 3/4" SXSXS
12	VRP71	1	1/2" THREADED MALE HOSE CONNECTOR (1/2" BARB)
13	VRP77	3	1/2" ID YELLOW PVC DROP HOSE
14	VRP500	1	1/2" HOSE CLAMP (USE W/ VRP77)
15	VT107	1	3/4" MALE SLIP X 1/2" FPT PVC
16	VT199	1	1 1/2" PVC TEE
17	VT200	1	1 1/2" 90 DEGREE PVC ELL
18	VV801	1	3/4" BALL VALVE SCHEDULE 80
19	VX150	3	1 1/2" PVC UNION
20	ZB1401	1	BAG, 4X6X4MIL, RECLOSABLE
21	VT194	1	1 1/2" PLAIN PVC PIPE (10 FT.)
22	SEE CHART	1	REDUCING MALE ADAPTER
23	SEE CHART	1	SUBMERSIBLE PUMP
24	813061	3	INLET COVER, PIPE
25	813063	2	GAP COVER, PIPE

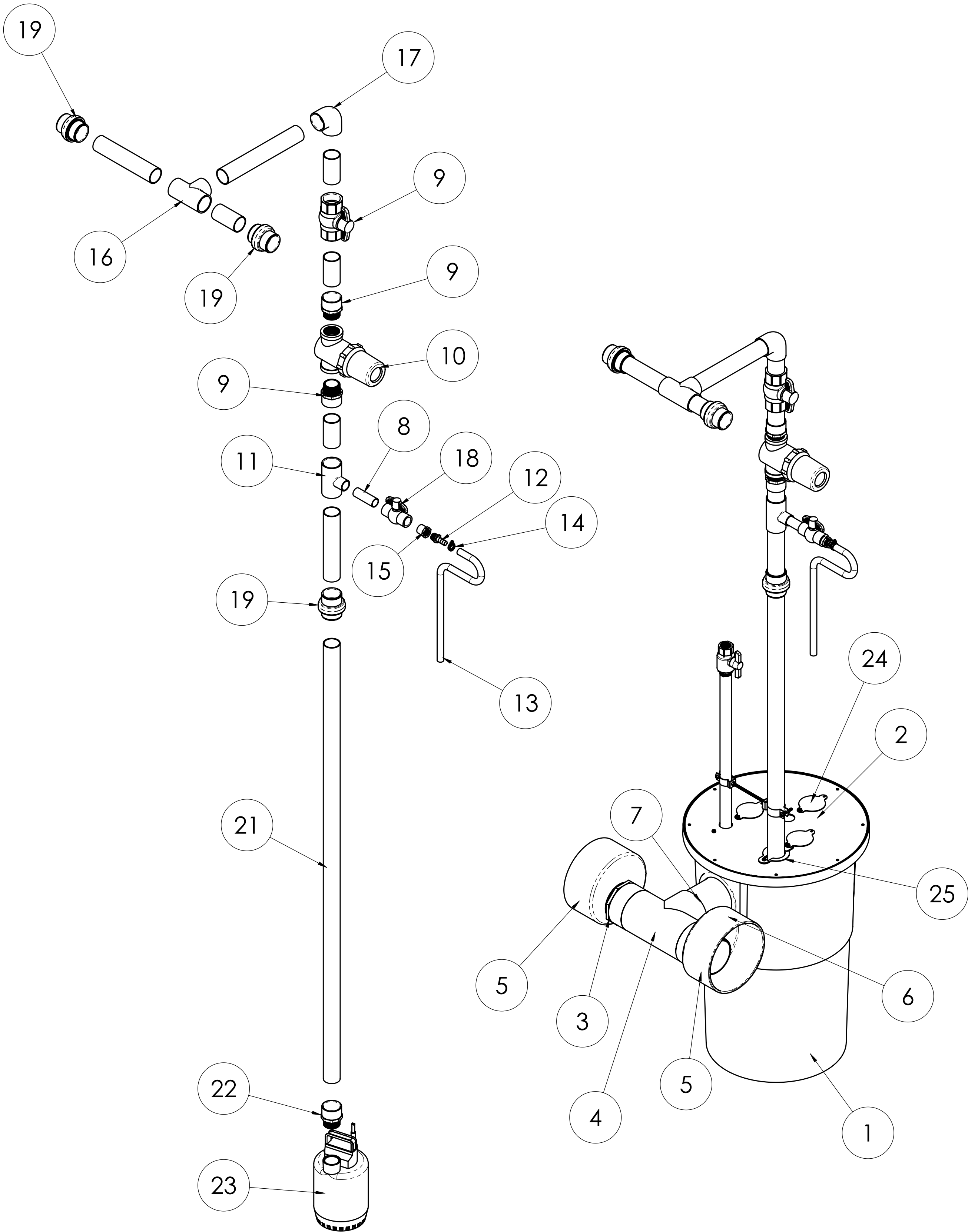
ITEM #	ASSEMBLY PART NUMBERS	
	813043	813047
22	PAA15	PAA17
23	PAP60	813060

REPAIT PARTS: FLOAT KIT

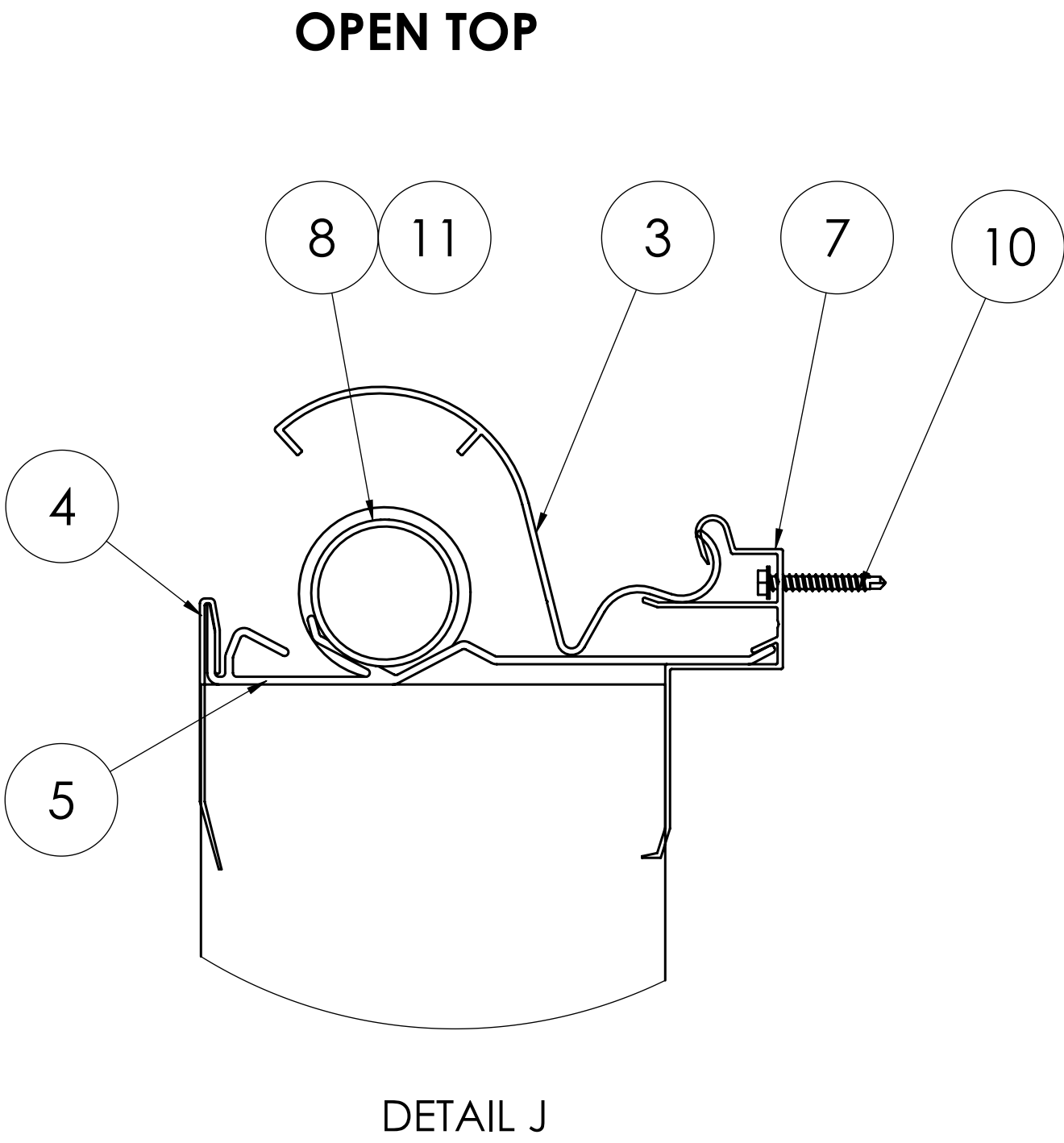
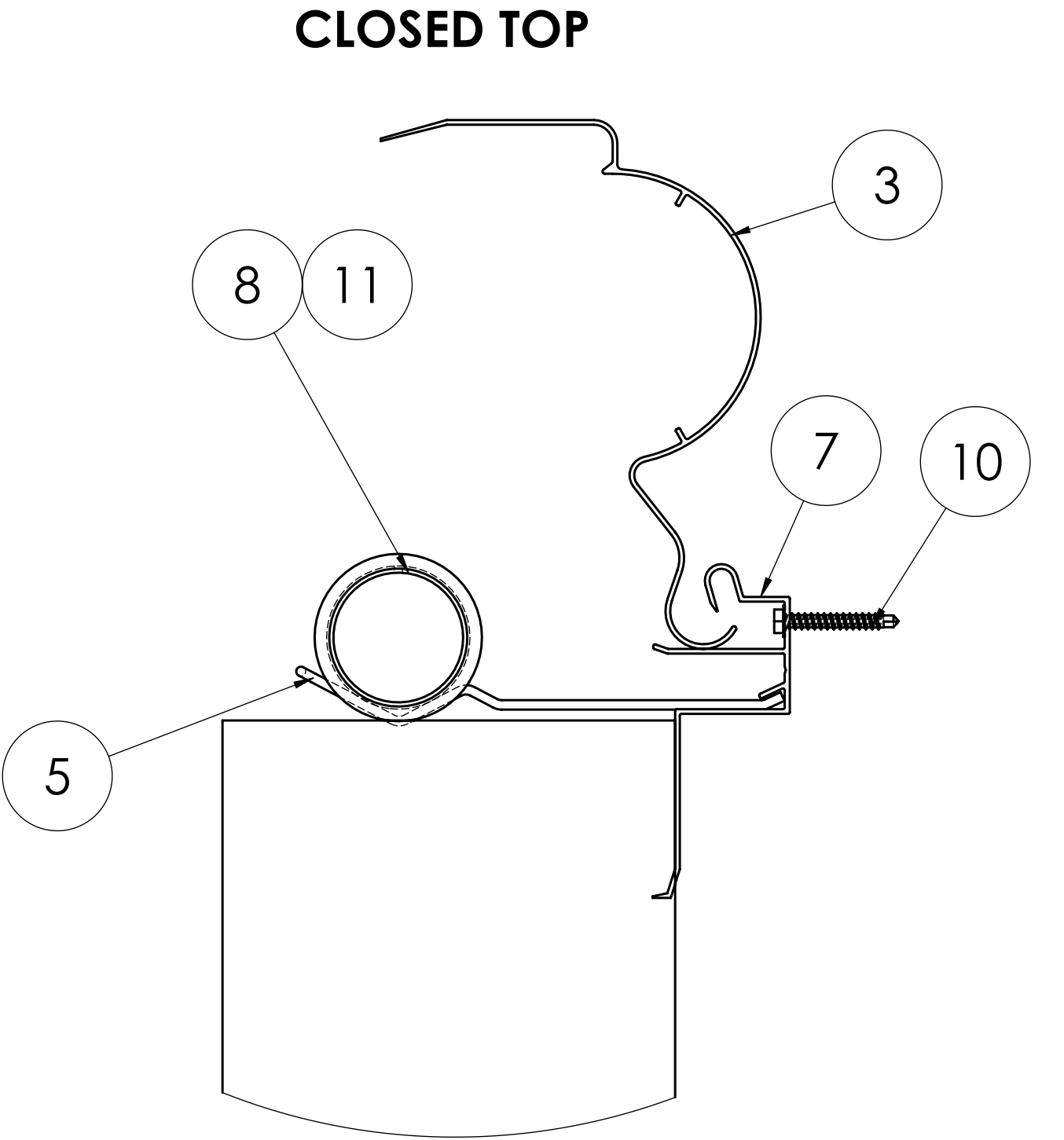
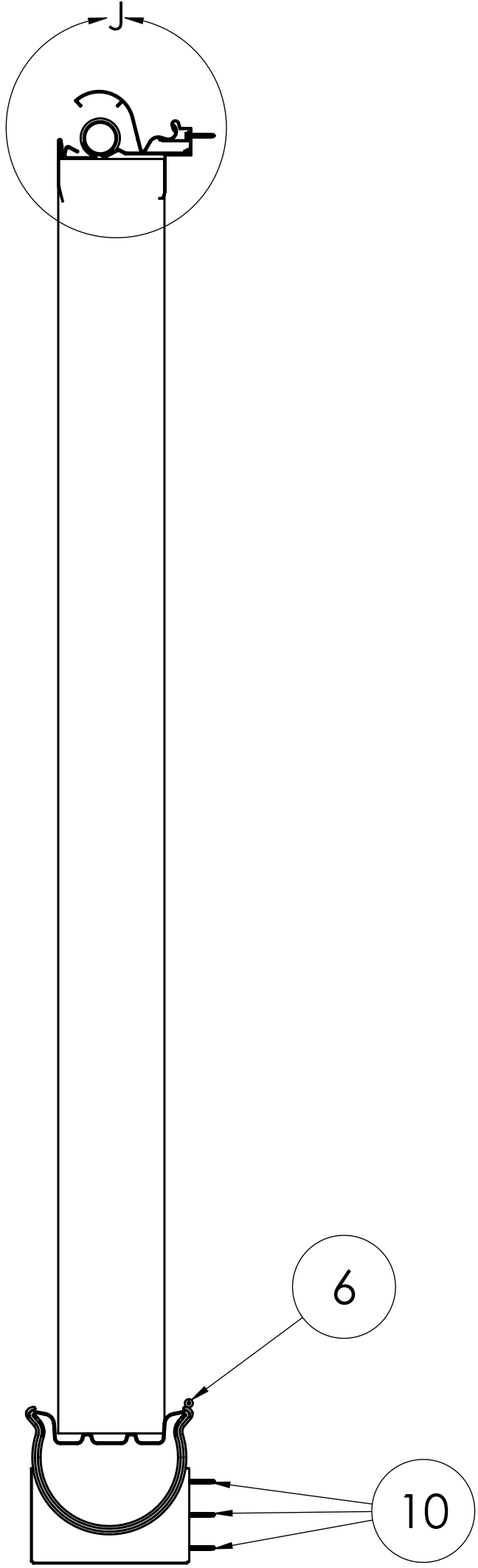
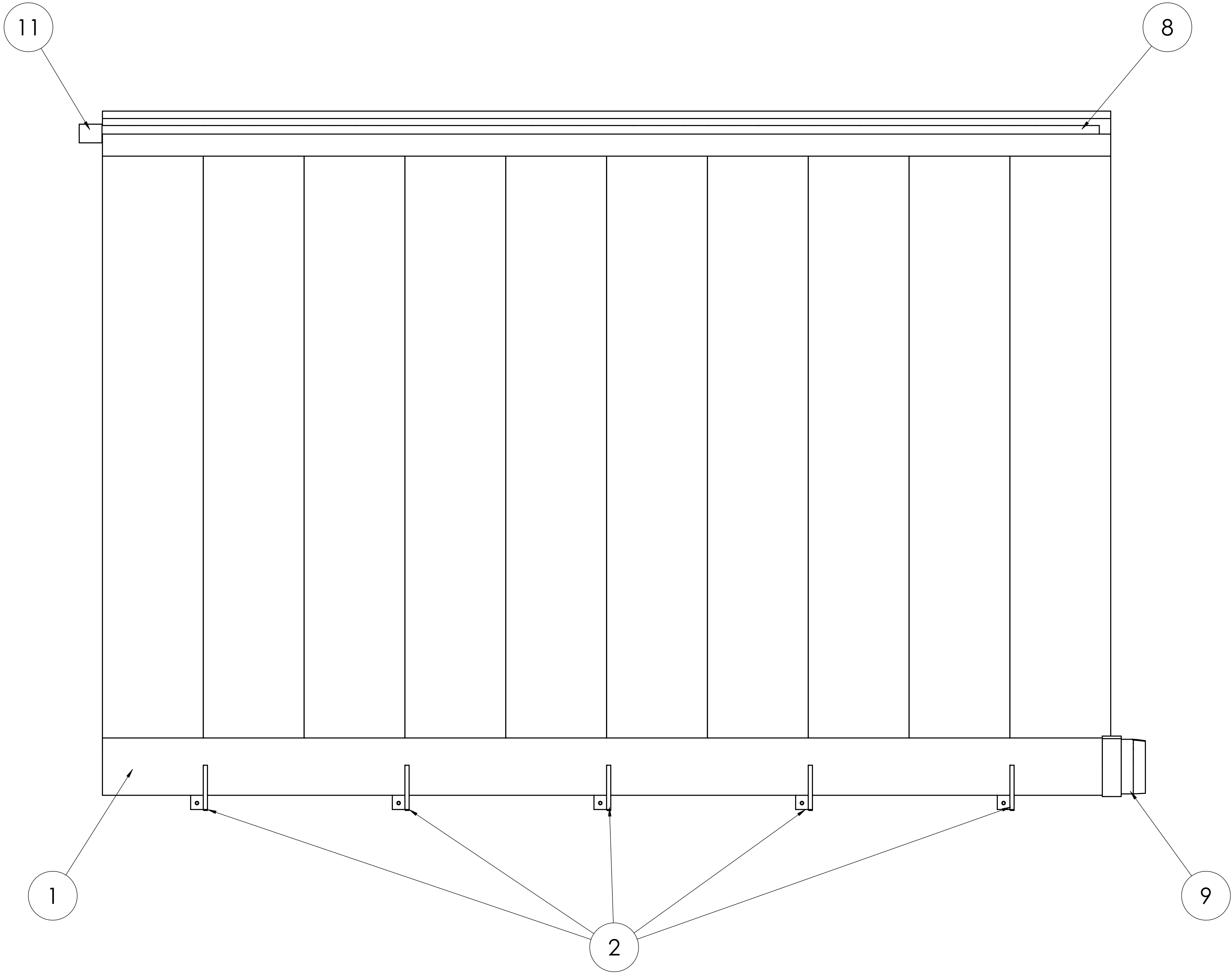
BILL OF MATERIALS (813055) FLOAT KIT, WATER INLET			
ITEM #	PART #	QTY	DESCRIPTION
1	011230	1	STUD, 1/4-20 X 6", 316 SS
2	012679	4	NUT, HEX, 1/4-20
3	813053	1	CLAMP, PIPE, 1-5/16", SS
4	813054	1	CLAMP, PIPE, 1-7/8", SS
5	820000	1	NIPPLE, 1" X 24" LONG MNPT
6	820001	1	BALL VALVE, 1" FNPT
7	PAF150HF	1	FLOAT VALVE, 1" FNPT



REPAIR PARTS: CENTER-FED HEADER KIT

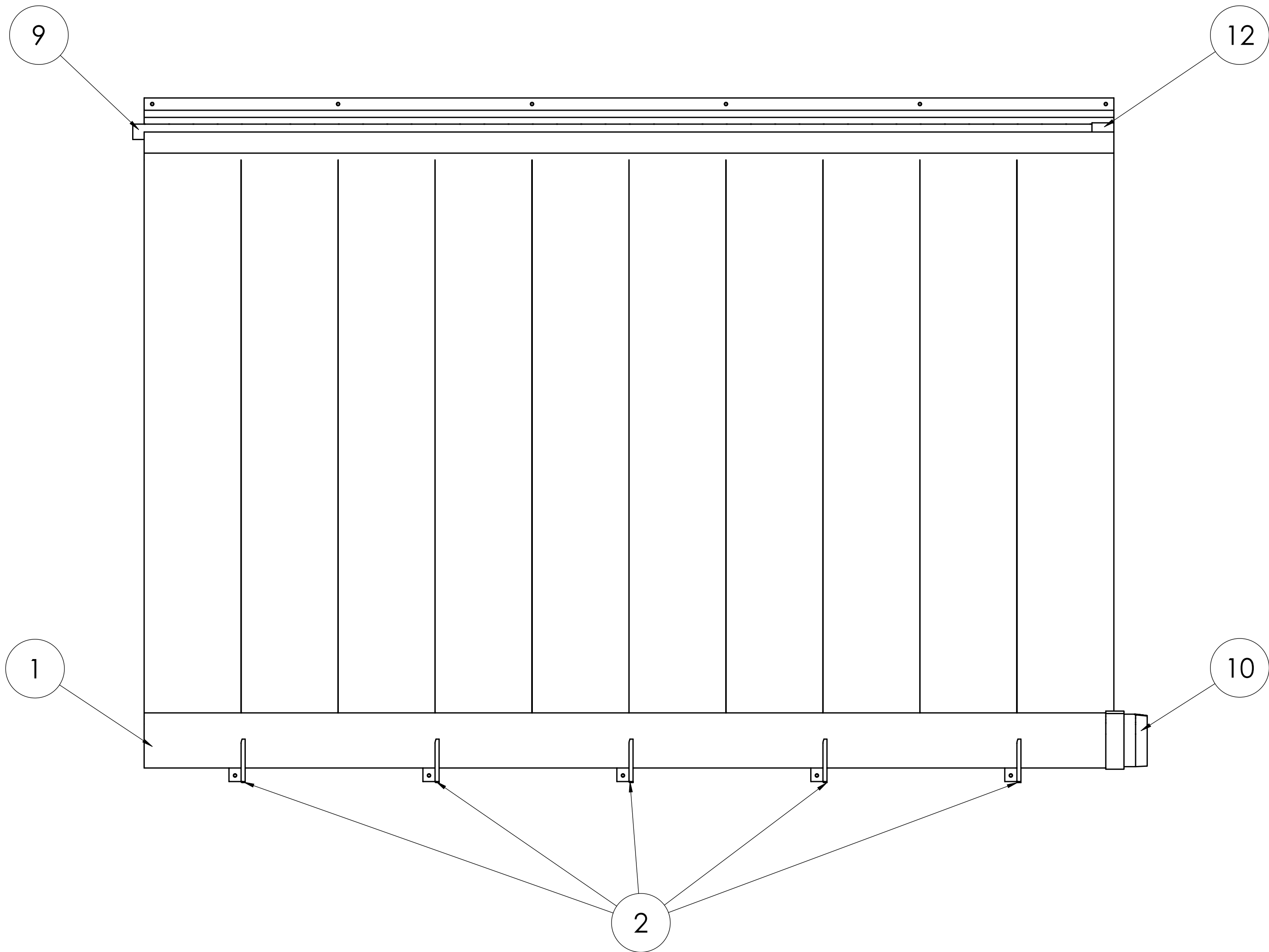


BILL OF MATERIALS (OPEN TOP PAK610EZO / CLOSED TOP PAK610EZ)				
ITEM #	OPEN TOP PT #	CLOSED TOP PT #	QTY	DESCRIPTION
1	813029	813029	1	TROUGH, COOL PAD, 10', STD
2	PAB250	PAB250	5	PIPE BRACKET FOR 6" RECIRCULATING SYSTEM - 8" PIPE
3	PAC607	813008	1	TOP ALUMINUM PAD COVER
4	PAC608	-	1	OPEN TOP PAD RETAINER 120" LONG
5	PAC609	PAB700	5	TOP PIPE BRACKET 1-1/2" LONG
6	PACROD	PACROD	1	SEAL BETWEEN TROUGH AND WALL (10 FT)
7	PAE500	PAE500	1	ALUM TOP EXTRUSION FOR
8	PAP150DS	PAP150DS	1	1 1/2" PVC(10')W/ 7/64" HOLE
9	PAP860	PAP860	1	COUPLER FOR PAP800WT
10	PAS250	PAS250	20	#12 x 1 1/2" SELF-DRILLING
11	VT198	VT198	1	1 1/2" PVC COUPLER

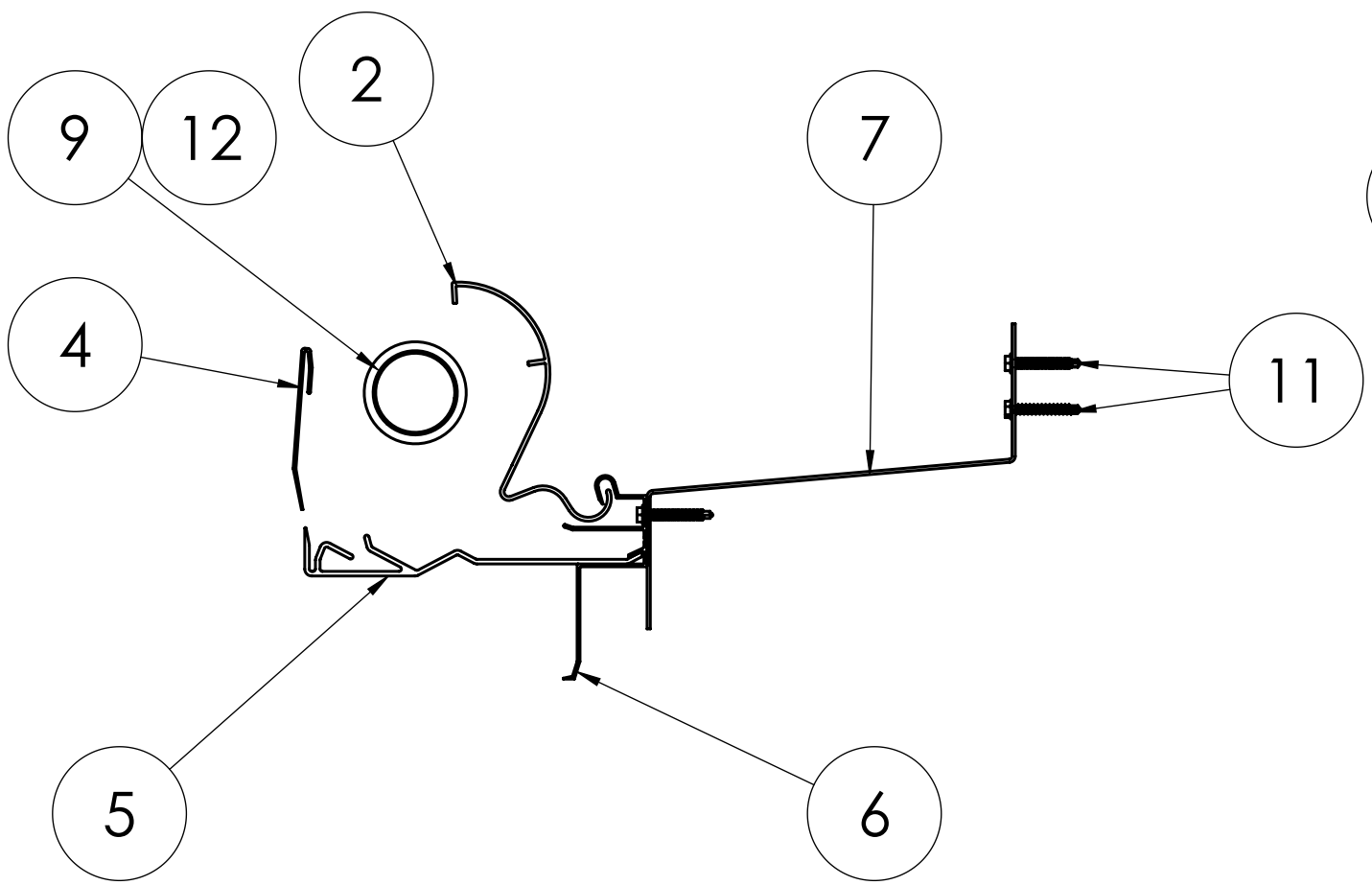


DETAIL J

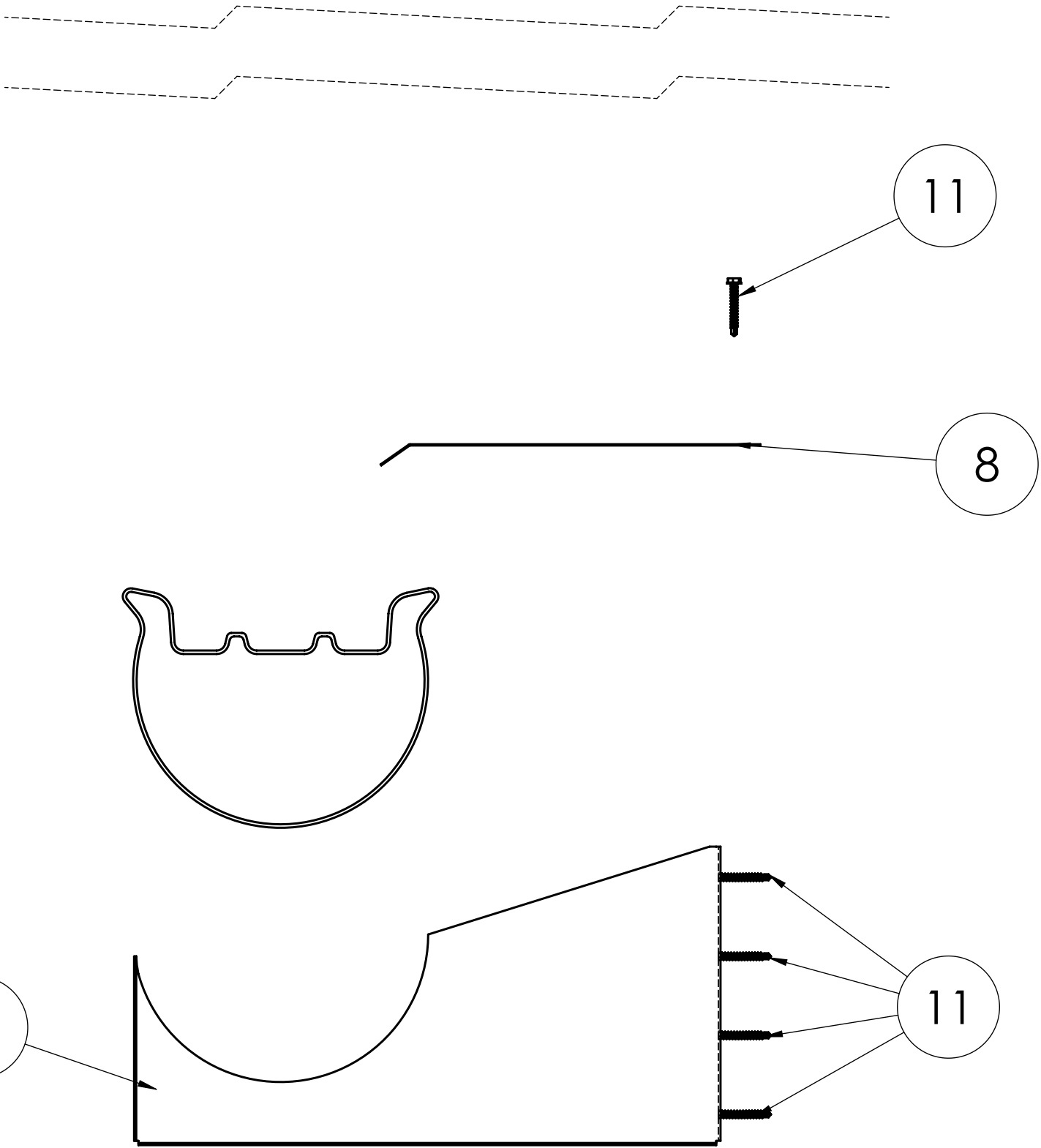
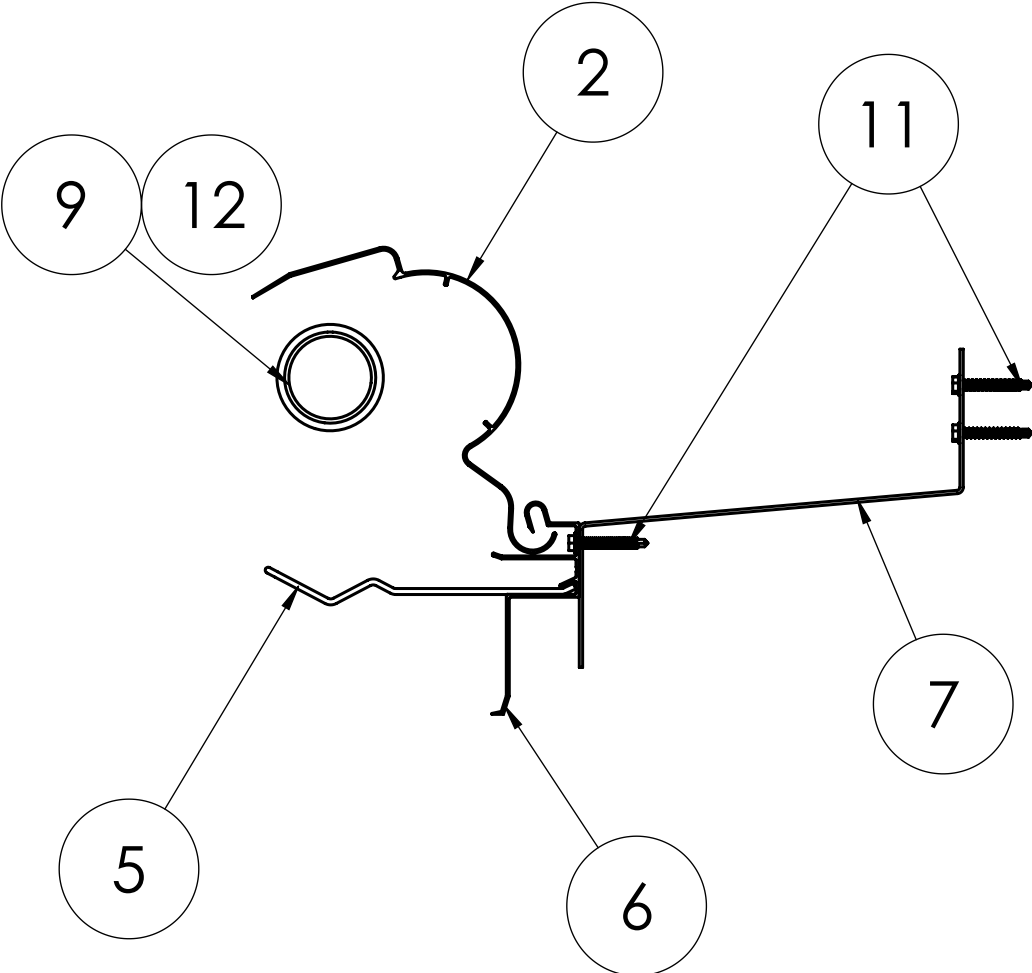
BILL OF MATERIALS (OPEN TOP PAK610EZO-E / CLOSED TOP PAK610EZ-E)				
ITEM #	OPEN TOP PART #	CLOSED TOP PART #	QTY	DESCRIPTION
1	813029	813029	1	TROUGH, COOL PAD, 10', STD
2	PAB25010	PAB25010	5	PIPE BRACKET FOR EXTENDED 6"
2	PAC607	813008	1	OPEN TOP ALUMINUM PAD COVER
4	PAC608	-	1	OPEN TOP PAD RETAINER 120" LONG
5	PAC609	PAB700	5	OPEN TOP PIPE BRACKET 1-1/2" LONG
6	PAE500	PAE500	1	ALUM TOP EXTRUSION FOR
7	PAEA17510	PAEA17510	1	8" EXTENDED TOP ADAPTER PLATE
8	PAEZEXT	PAEZEXT	1	EXTENDER PLATE FOR EZ TROUGH
9	PAP150DS	PAP150DS	1	1 1/2" PVC(10')W/ 7/64" HOLE
10	PAP860	PAP860	1	COUPLER FOR PAP800WT
11	PAS250	PAS250	53	#12 x 1 1/2" SELF-DRILLING
12	VT198	VT198	1	1 1/2" PVC COUPLER



OPEN TOP

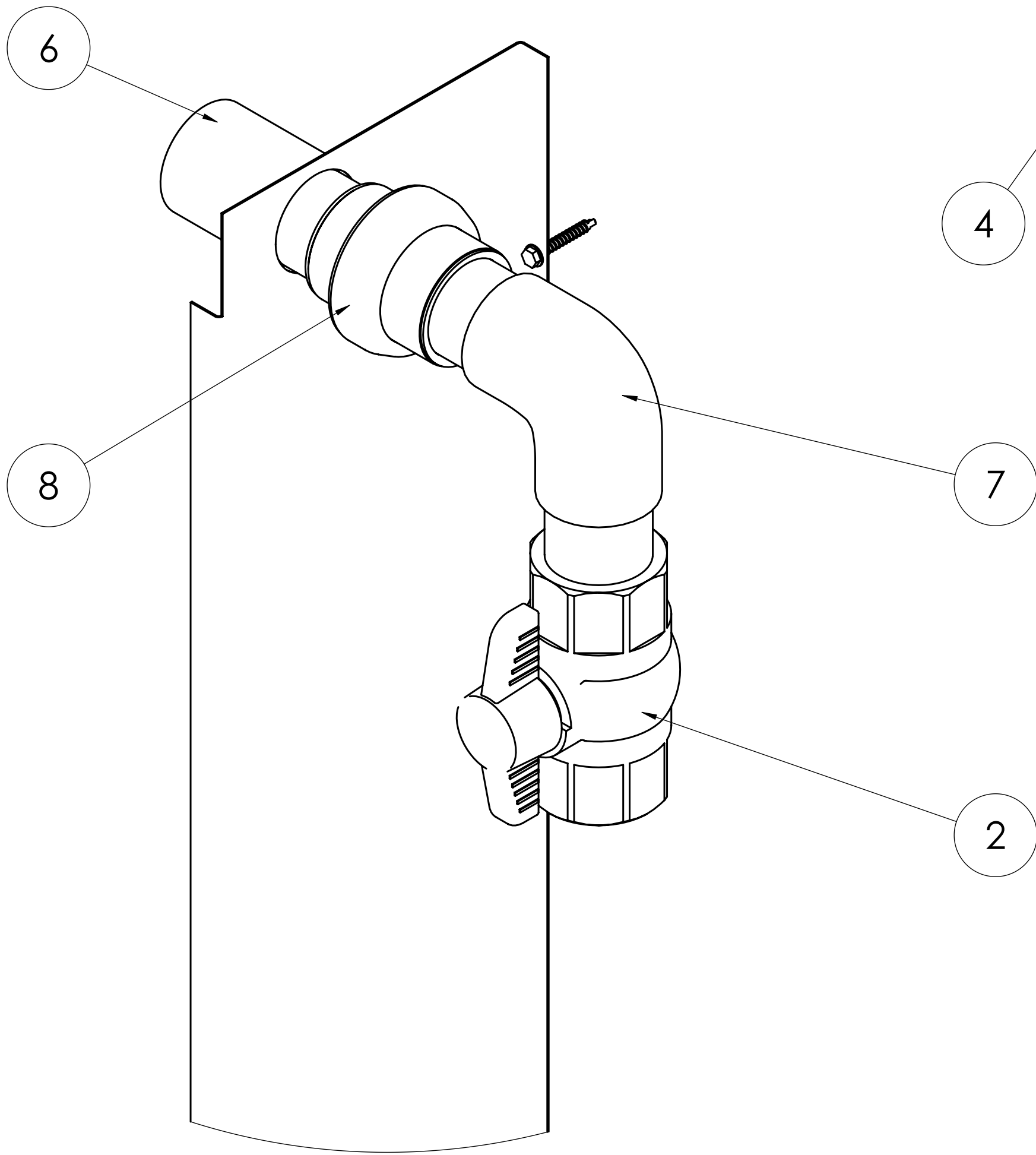


CLOSED TOP



EXPLODED SIDE VIEW

BILL OF MATERIALS (PAEC6/PAEC6-E/813025))					
ITEM #	FLUSH MOUNT PART #	EXTENDED MOUNT PART #	FLUSH MOUNT (2 M TALL) PART #	QTY	DESCRIPTION
1	813011	813011	813011	1	FLEXIBLE 8" PVC CAP
2	PABV15	PABV15	PABV15	1	1-1/2" PVC BALL VALVE
3	PAC800	PAC80010	813026	2	ALUM. SIDE COVER FOR 6" PAD
4	PAP865	PAP865	PAP865	2	END ADAPTER FOR PAP800WT
5	PAS250	PAS250	PAS250	8	#12 x 1 1/2" SELF-DRILLING
6	VT198	VT198	VT198	1	1 1/2" PVC COUPLER
7	VT200	VT200	VT200	1	1 1/2" 90 DEGREE PVC ELL
8	VX150	VX150	VX150	1	1 1/2" PVC UNION



DETAIL K

