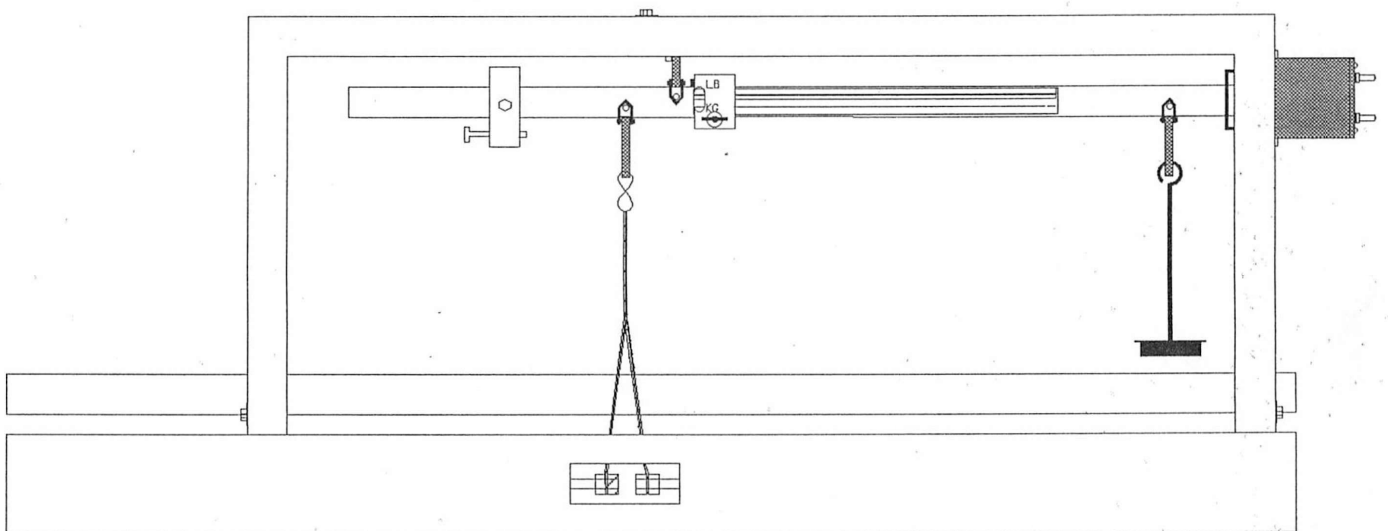




PLATFORM SCALE

415445, 415448, 415449, 415452, 415525

Installation Manual



990231

REV [C]

©2024 Valco Industries, Inc.

Intentionally Blank

Table of Contents

Val Products, Inc. Warranties.....4

Introduction4

Safety Symbols4

Installation Instructions: Platform Scale Assembly5

Installation Instructions: Bridge Kit6

Operation8

Calibration8

Weigh Hopper & Extension: Exploded Parts Drawing & Parts List9

Switch10

Customer Service11



VAL PRODUCTS, INC. WARRANTIES

For Warranty claims information, please see the “Manufactured Products Standard Warranty” form QMS101 available from Val Products, Inc. by:

- Phone: 1-800-998-2526
- Email: marcom@val-co.com
- Online: <http://val-co.it/warranty>

Conditions and Limitations:

- Products and Systems involved in a warranty claim under the “Manufactured Products Standard Warranty” shall have been properly installed, maintained and operated under competent supervision, according to the instructions provided by Val Products, Inc.
- Malfunction or failure resulting from misuse, abuse, negligence, alteration, accident or lack of proper installation or maintenance shall not be considered a defect under the Warranty.

Introduction

Please check your shipment for correct parts and condition.

- Read all safety information, instructions and illustrations before starting to install your new platform scale. Please review the complete assembly manual before starting and be sure to check your shipment with the packing list for any shortages. Please report shortages promptly.
- Metric measurements are shown in millimeters and in parenthesis throughout the manual. Example: 13” (330mm)

Symbols

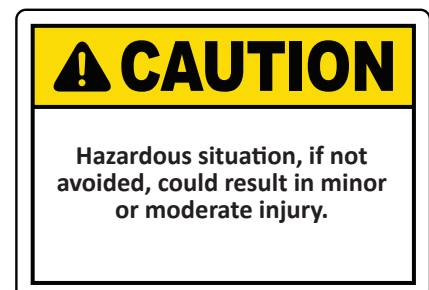
Our concern is for your safety. The safety warnings are included in this manual as a guide to help and encourage the safe operation of your equipment. It is your responsibility to evaluate the hazards of each operation and implement the safest method of protecting yourself as owner and/or operator.



= NOTICE - Important information. Be sure to read.



= WARNING - The safety alert symbol is used on warning signs that describe the importance of a feature or explain a step that one should pay close attention to avoid problems or personal injury.

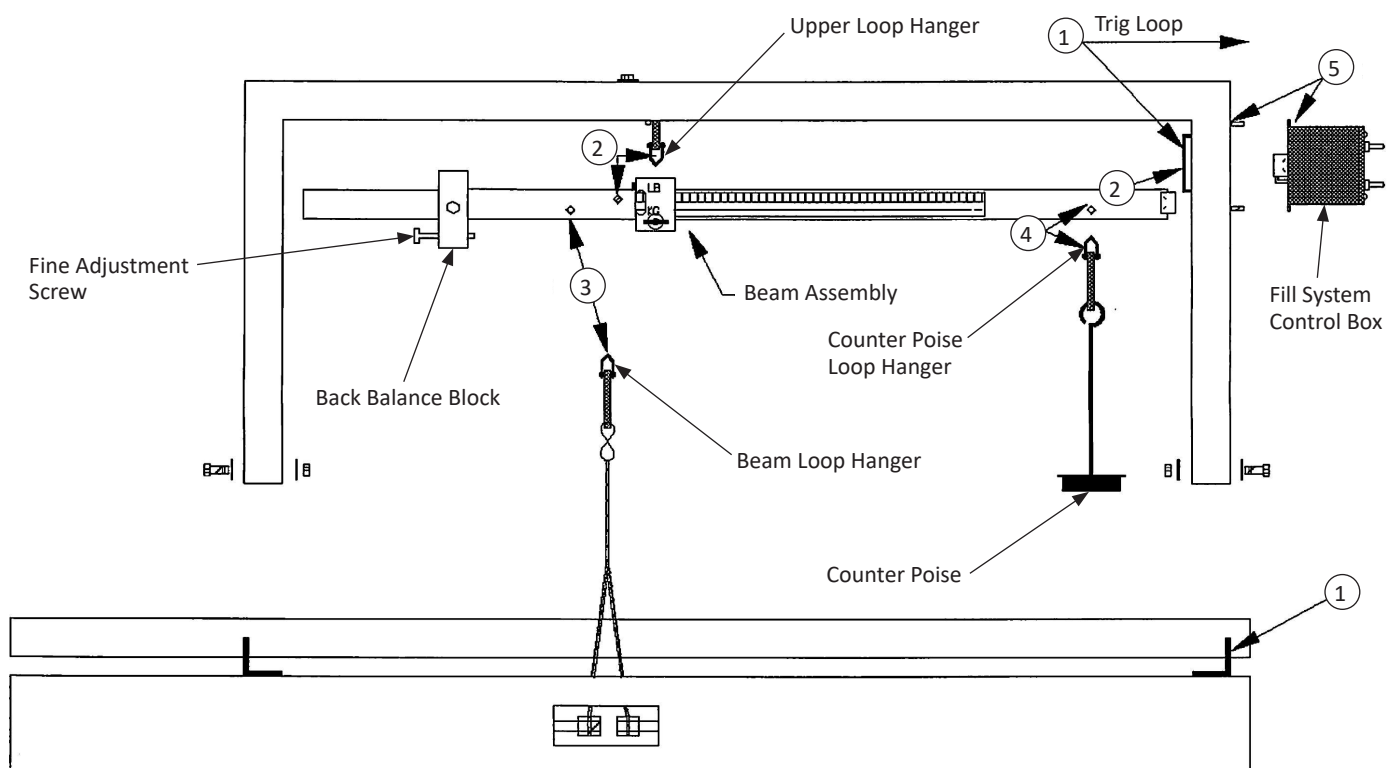


Installation Instructions: Platform Scale Assembly

The scale must be installed on a firm, level surface to operate properly. Concrete, solid concrete building blocks or a good grade of heavy lumber will be sufficient. Place the scale in the location desired. See Figure 1 for steps (1) thru (5), and Figure 2 for steps (6) thru (7).

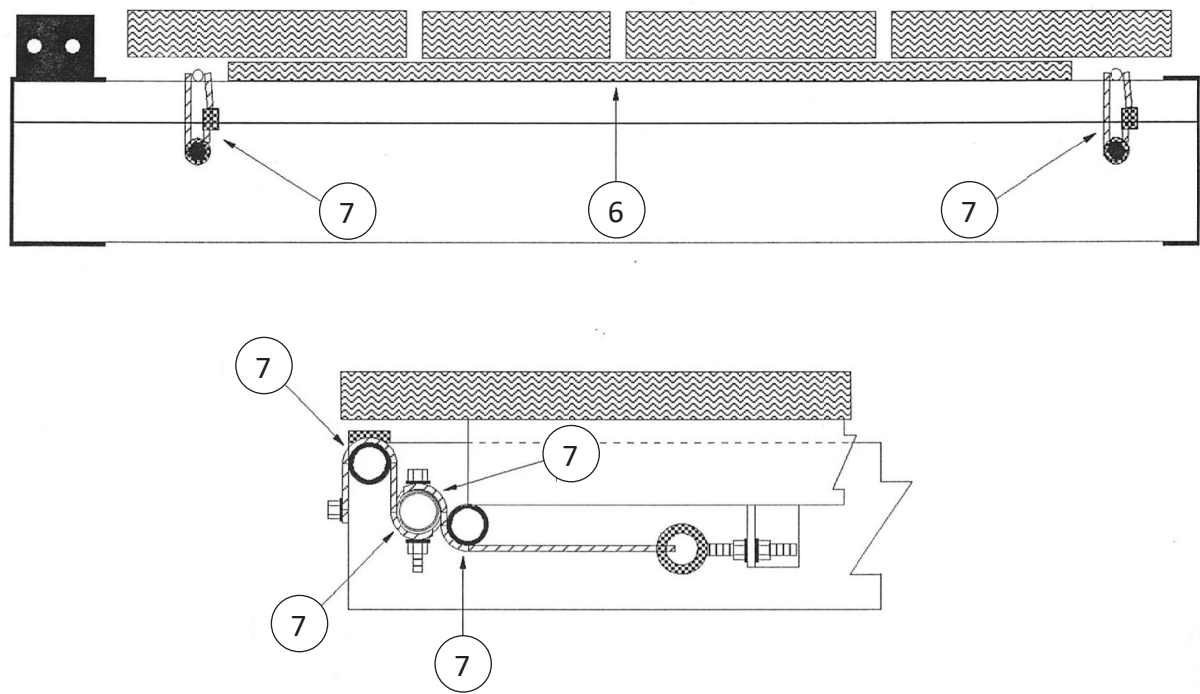
1. Remove the bolts attached to the 2 short angles welded to the top of the scale frame. Set the beam stand over these angles and fasten with the bolts, nuts, washers, and lockwashers provided. Face the end of the beam stand with the trig loop to the end of the scale.
2. Insert the end of the beam into the trig loop and hang the center pivot into the bearings on the upper loop hanger mounted to the beam stand.
3. Attach the loop hanger connected to the cables coming from the levers on the scale frame to the rear pivot of the beam in the same fashion. IMPORTANT: Make sure cables are not twisted.
4. Hang the counter poise and loop hanger onto the pivot on the end of the beam.
5. OPTIONAL: Attach the fill system control box to the side of the beam stand with the screws provided. The magnet or switch may need to be adjusted for proper clearance after the scale has been completely set up. Approximately 1/16" clearance between the magnet and switch is sufficient.
6. When the scale has been completely assembled and set into place, remove the packaging from between the wood deck and steel frame as shown in Figure 2.
7. Check all of the cables to make sure they are seated properly as shown in Figure 2.
8. The scale is now ready for calibration.

Figure 1



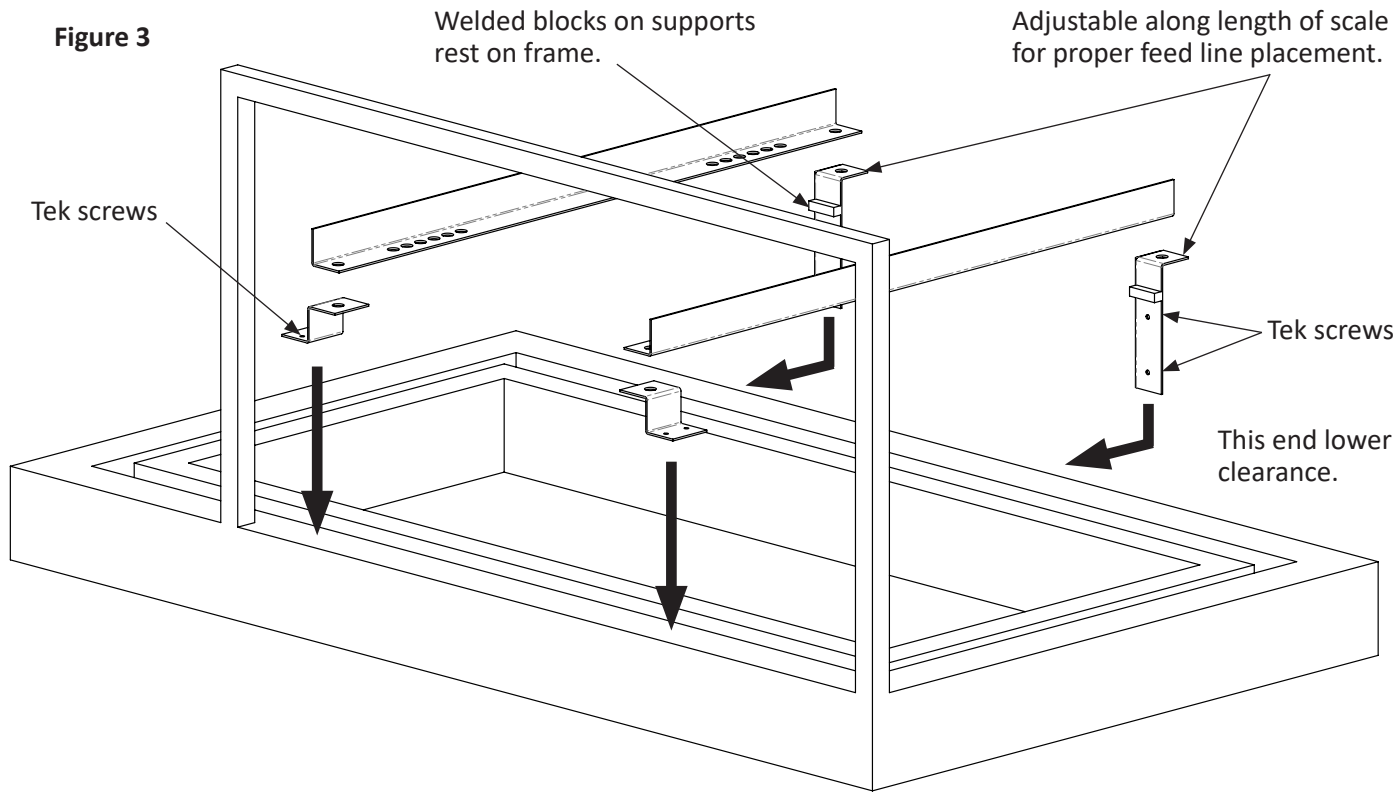
Installation Instructions: Platform Scale Assembly - continued

Figure 2



Installation Instructions: Bridge Kit

Install framework for scale as shown below using supplied hardware.



Installation Instructions: Bridge Kit - continued

Figure 4

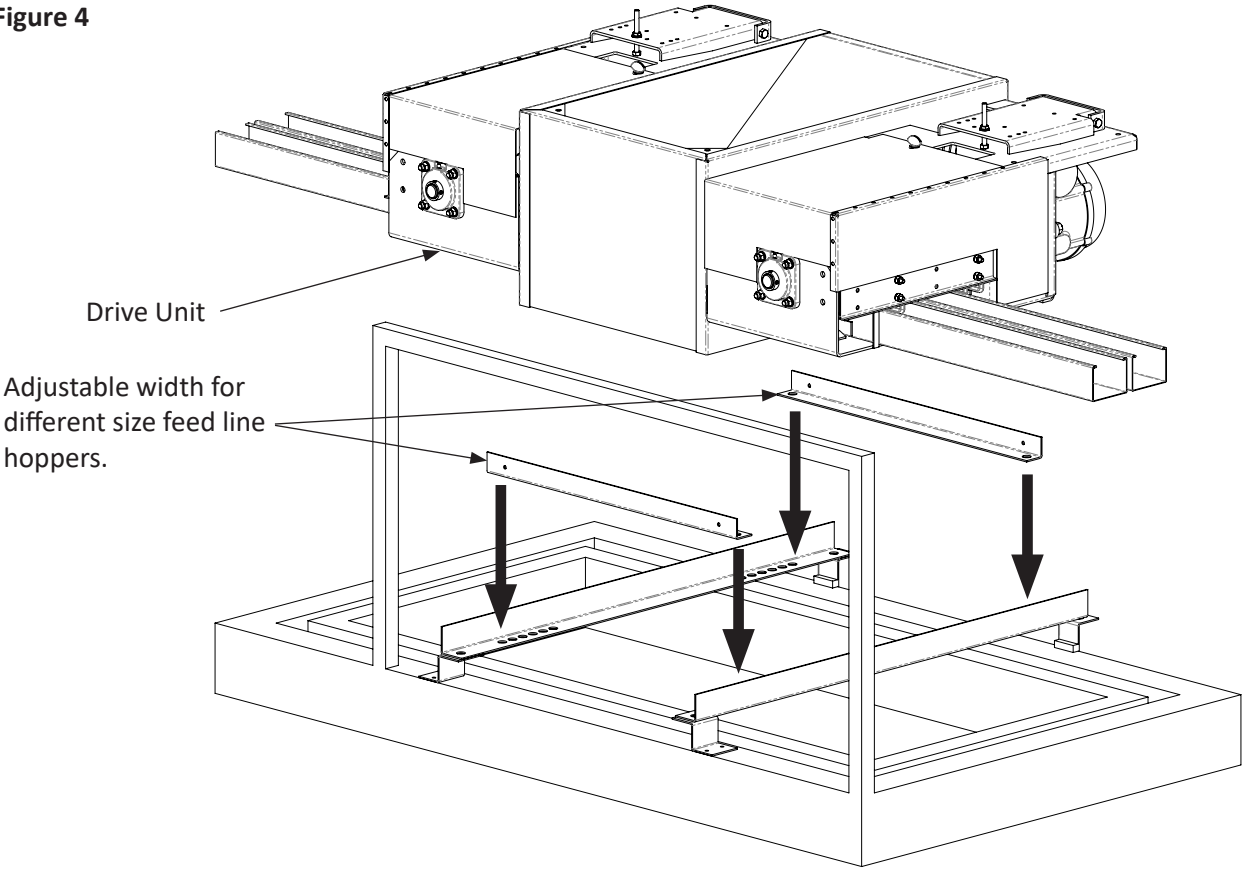
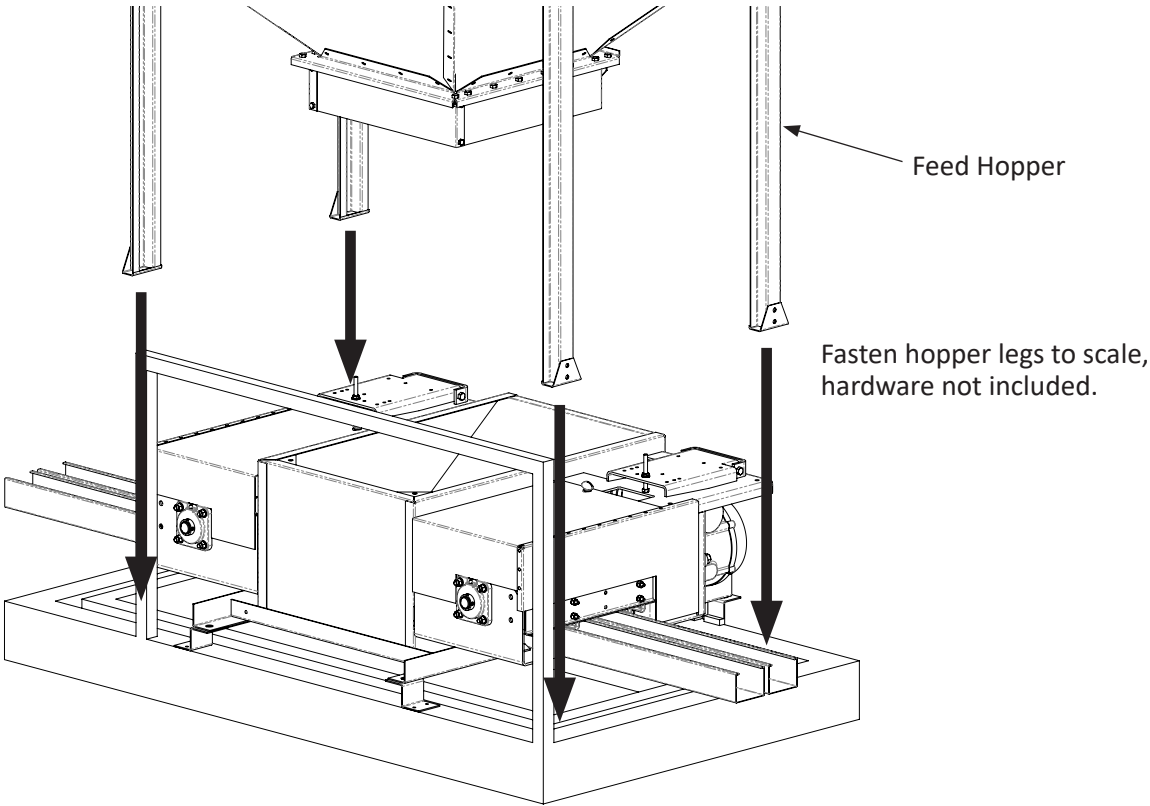


Figure 5



Operation

1. Check zero balance. The end of the beam should be centered in the trig loop (#1 – Figure 1). If the optional control box has been installed center the magnet on the end of the beam with the switch on the control box.
2. If using a weigh hopper over the top of a feed line hopper make sure the gate on the weigh hopper is closed.
- 3A. (English Units) Determine the feed weight needed (i.e. 1800 pounds). Decide which weights will be needed to reach this weight. The large 5 pounds Weight = 1500 pounds; medium size weight 2 pounds = 600 pounds; and the small weights 1 pounds = 300 pounds each. Use the large 1500 pounds weight plus the small 300 pounds = total 1800 pounds or move the poise on the beam out to 300 pounds and leave the smaller weight off.
- 3B. (Metric Units) Determine the feed weight needed (i.e. 700 kilograms). Decide which weights will be needed to reach this weight. Larger weight 1 kilogram = 300 kilograms; smaller weight 500 grams = 150 kilograms. Use 2 of the larger weights = 600 kilograms and move the poise on the beam out to 100 kilograms; 600 kilograms weights + 100 kilograms poise = total 700 kilograms.
- 4A. Start the fill system and when the beam reaches the center of the trig loop the scale has reached the set weight.
- 4B. Start the fill system with the optional control box and when the scale reaches the set weight the system will automatically shut off.
5. Open the gate on the weigh hopper and you are ready to feed.

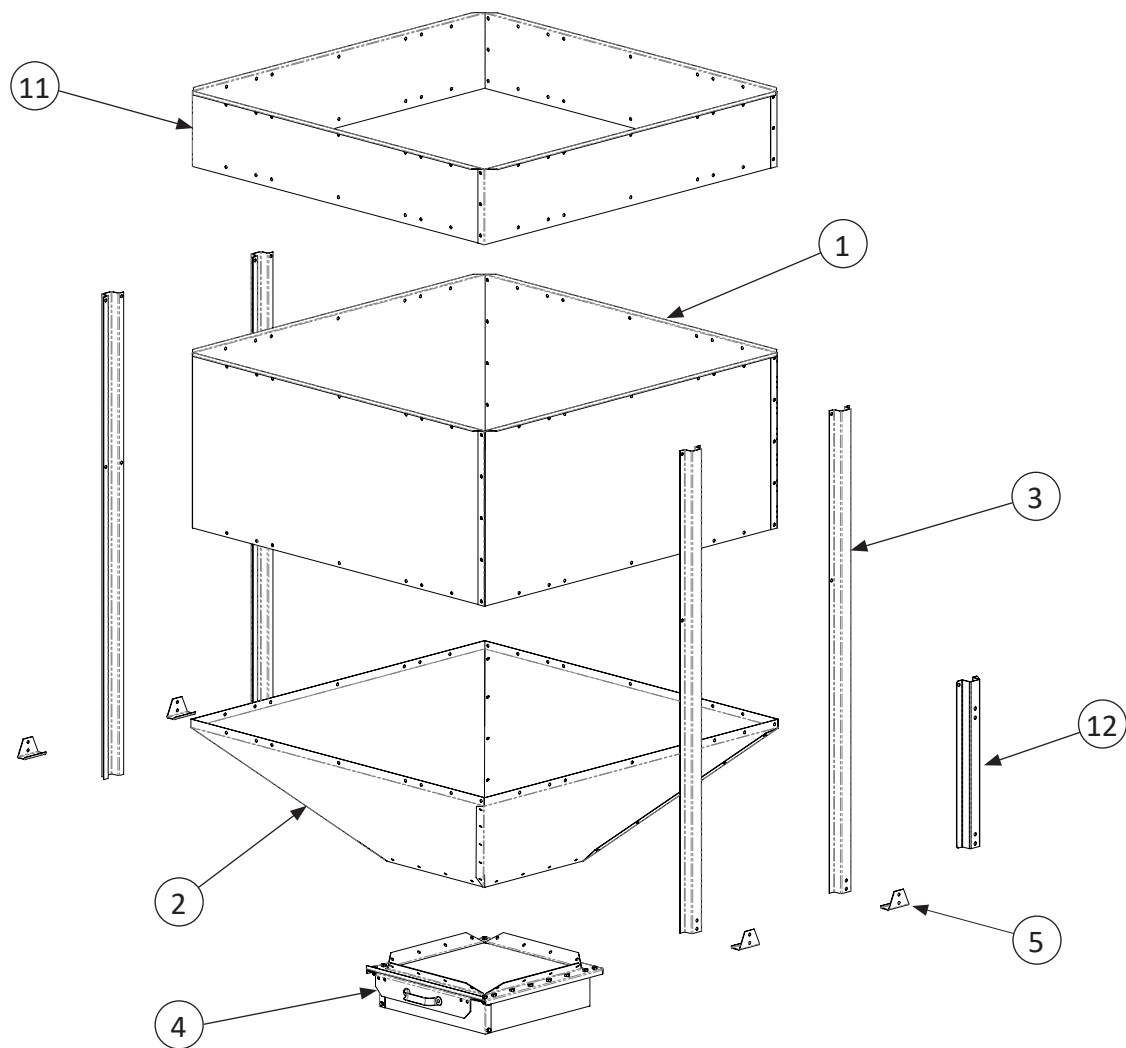
Calibration

NOTE: ALL SCALES HAVE BEEN FACTORY CALIBRATED TO FULL CAPACITY TO ASSURE ACCURATE WEIGHING

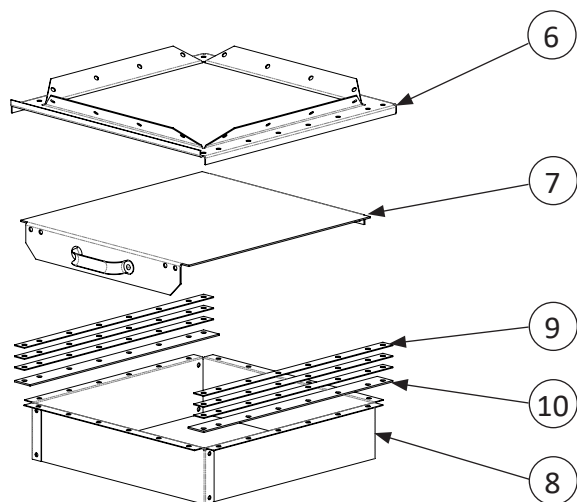
1. It will be necessary to adjust the zero balance on the scale to allow for the weight of the hopper and/or feed line system. This is easily accomplished with the back balance block (Figure 1) and fine adjustment screw on the back balance shown in Figure 1. Move the back balance in or out as needed to center the end of the beam in the center of the trig loop (Figure 1).
2. If the optional control box has been installed, center the magnet on the end of the beam to the switch on the control box
3. If the back balance is moved all the way into the pivot and zero balance still cannot be achieved, it will be necessary to add weight to the counter poise (Figure 1). Lead shot has been shipped with the scale for this purpose.
4. Scale is now ready for use.



Weigh Hopper & Extension: Exploded Parts Drawing & Parts List



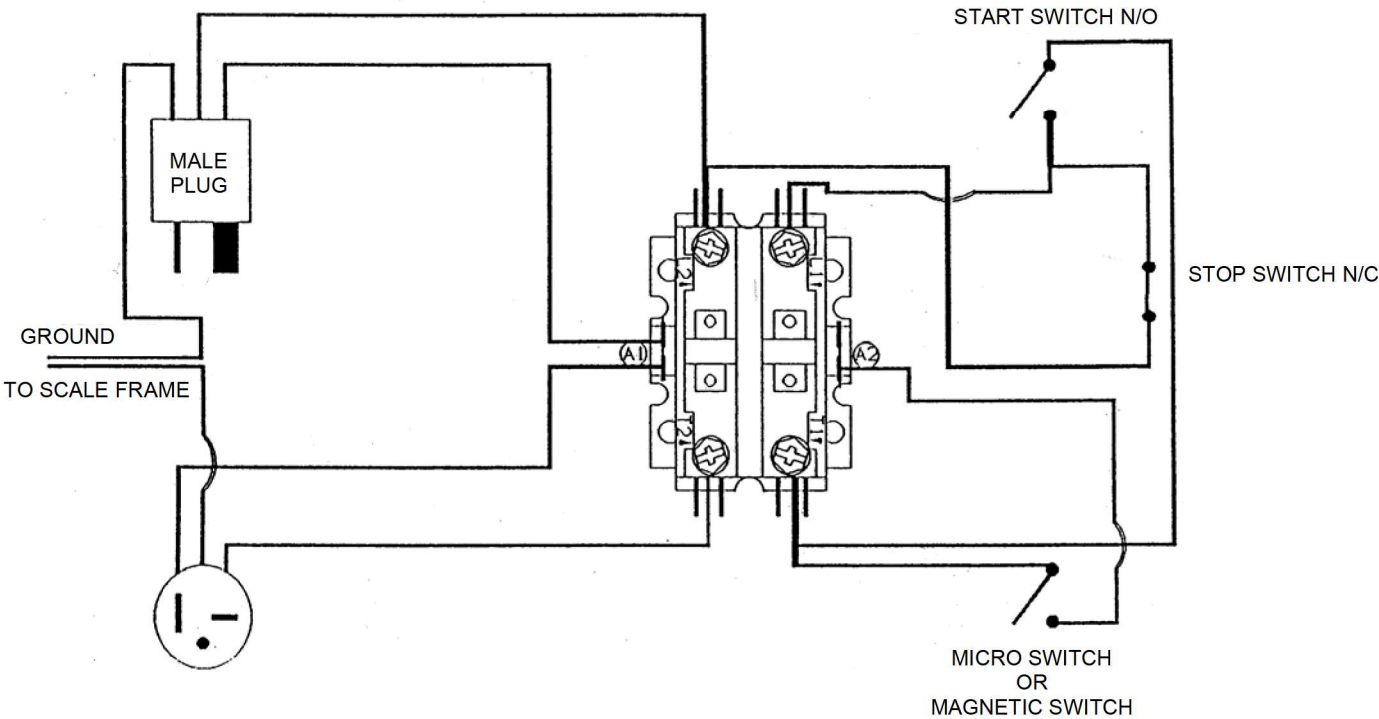
Exploded Detail View of 410516 Slide Valve



ITEM #	PART #	QTY	DESCRIPTION
410509 - 1400# WEIGH HOPPER			
1	410501	4	MAIN HOPPER SECTION
2	410502	4	TAPPER HOPPER SECTION
3	410504	4	1400# HOPPER LEG
4	410516	1	SLIDE VALVE & HARDWARE CARTON
5	410518	4	LEG BASE PLATE
-	410519	1	HARDWARE BAG FOR WEIGH HOPPER
6	410523	1	SLIDE VALVE HOUSING
7	410524	1	SLIDE PLATE ASSEMBLY
8	410526	4	BAFFLE
9	501256	6	16 GA SLIDE SPACER
10	501258	2	SLIDE VALVE RETAINER STRIP
410510 - 400# HOPPER EXTENSION			
-	410520	1	HARDWARE BAG FOR HOPPER EXTENSION
11	410521	4	400# EXTENSION HOPPER SECTIONS
-	410522	1	BUNDLE OF 4 EXTENSION HOPPER SECTIONS
OPTIONAL HOPPER EXTENSION ADD-ONS			
-	010252	16	5/16" LOCK WASHER
-	010540	16	5/16-18 X 1/2" TRUSS BOLT
-	011114	16	5/16-18 HEX NUT
12	411033	4	HOPPER EXTENSION LEG



Switch



Customer Service

Customer Service
210 E. Main Street
Coldwater, OH 45828
800.998.2526



Dealer Name: _____

Street / PO Box _____

City _____

State / Province _____

Zip / Postal _____

Phone _____

Fax _____

E-mail _____

Website _____

North America:
Phone: 800.99VALCO (800.998.2526)
Fax: 419.678.2200
Email: sales@val-co.com

International:
Phone: (+1) 419.678.8731
Fax: (+1) 419.678.2200
Email: intl.sales@val-co.com

