



# 36" and 48" Box Fan Installation

936425-ZM, 936435-ZM, 948425-ZM

## Quick Sheet

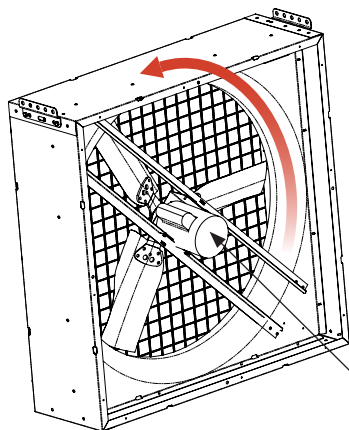


Do not install fan with moving parts within seven feet of floor or grade level without a guard that complies with OSHA Regulations. Do not use unless electrical wiring complies with all applicable codes. Do not wire without providing for power source disconnect at the fan itself. Do not service except by a qualified maintenance technician and only after disconnecting the power source. Do not install in room where flammable material is stored or flammable vapors might build up. Failure to observe all of these precautions can result in serious injury or death.

### 36" and 48" Box Fan Installation Instructions

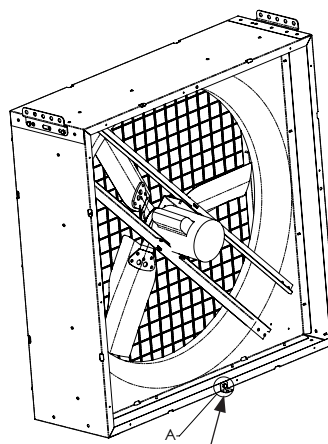
#### STEP 1

Check direction: The blade should rotate counterclockwise from the motor end, as shown.

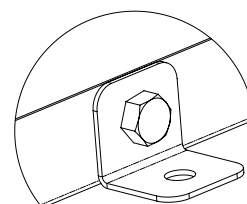


Wire up motor

#### STEP 2 (Optional)



Install 936191-ZM

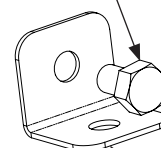


**DETAIL A**  
(Assembled)

5/16-18 X 1/2" bolt

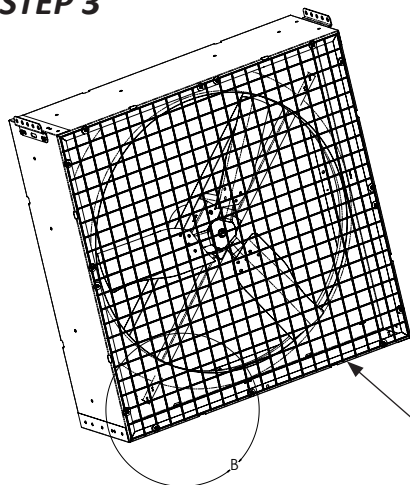


5/16-18 flange nut

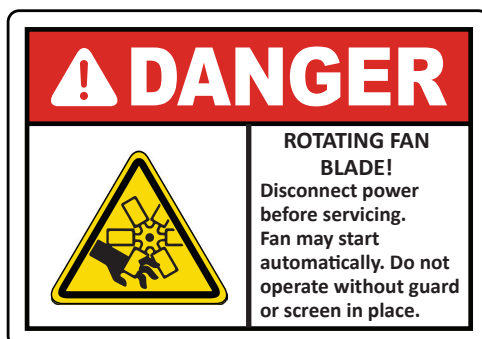


936191-ZM

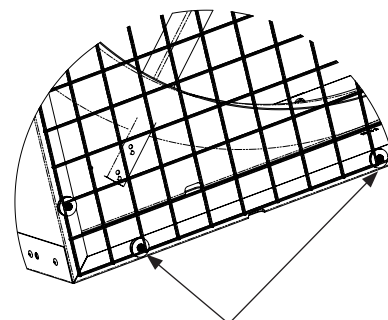
#### STEP 3



Install wire guard



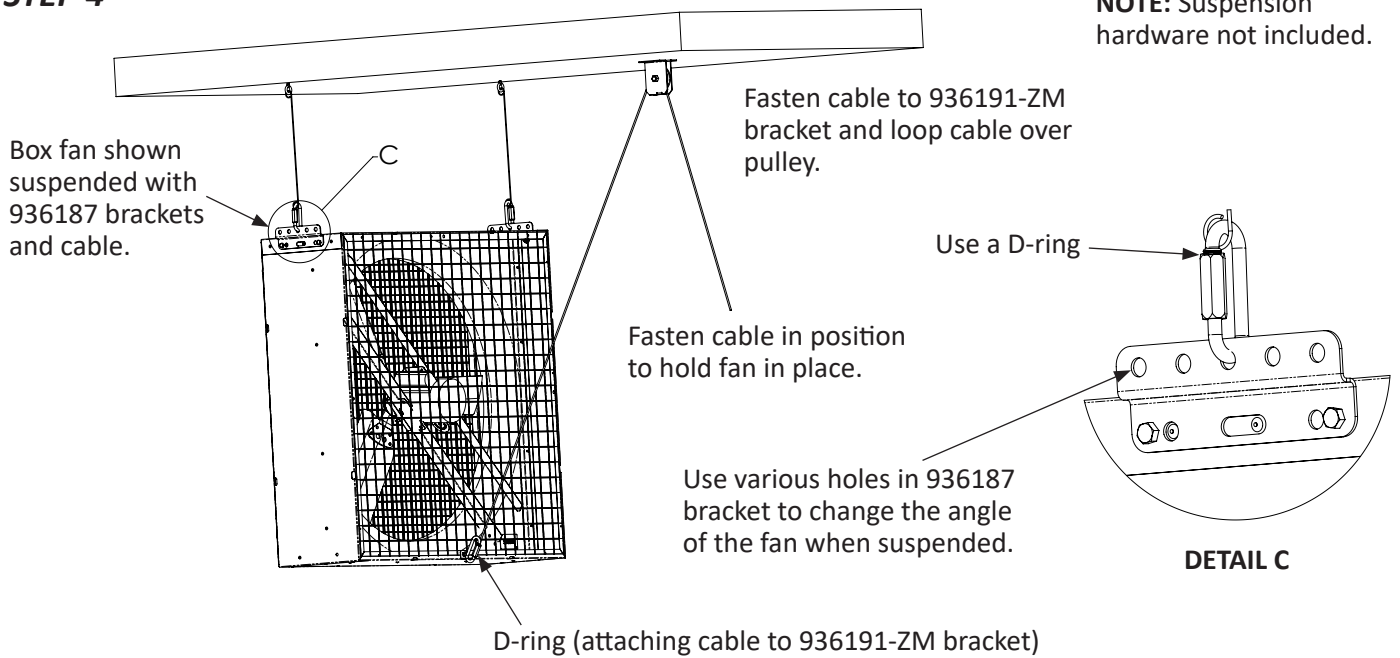
#### DETAIL B



Install wire guard onto both sides of box fan with washers and screws, as shown.

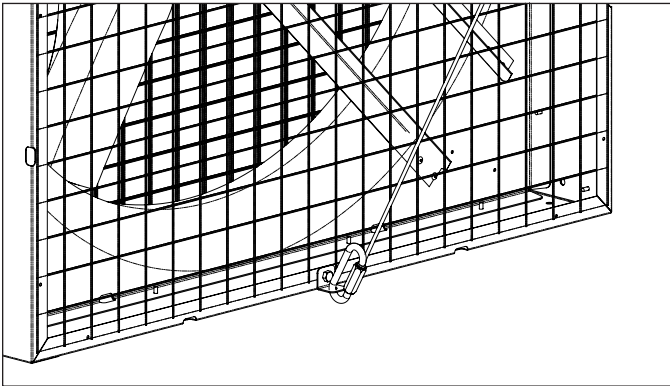
## 36" and 48" Box Fan Installation Instructions - continued

### STEP 4

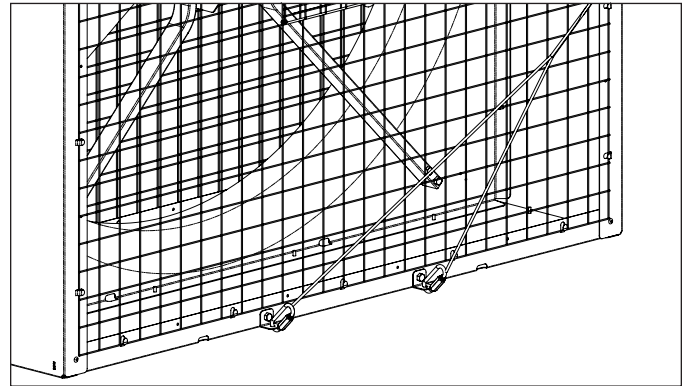


(36" fan shown above. 48" fans use (2) brackets - see detail views below)

Detail view of 36" fan with (1) 936191-ZM bracket



Detail view of 48" fan with (2) 936191-ZM brackets



## 36" & 48" Fans - Repair Parts List

FAN SIZE	DRIVE TYPE	DESCRIPTION	MOTOR	DRIVE PULLEY	DRIVEN PULLEY	BELT	BLADE	*BRACKET
		FAN PART #						
36"	DIRECT DRIVE	936425-ZM	980118	-	-	-	936052	936191-ZM
36"	DIRECT DRIVE	936435-ZM	980104	-	-	-	936052	936191-ZM
48"	BELT DRIVE	948425-ZM	980032	980033	980026	980012	FP477	936191-ZM

\*36" Fans use (1) 936191-ZM bracket. 48" Fans use (2) 936191-ZM brackets.

### North America:

Phone: 800.99VALCO; 800.998.2526

Fax: 419.678.2200

Email: [sales@val-co.com](mailto:sales@val-co.com)

990320

REV [B]

### International:

Phone: (+1) 419.678.8731

Fax: (+1) 419.678.2200

Email: [intl.sales@val-co.com](mailto:intl.sales@val-co.com)