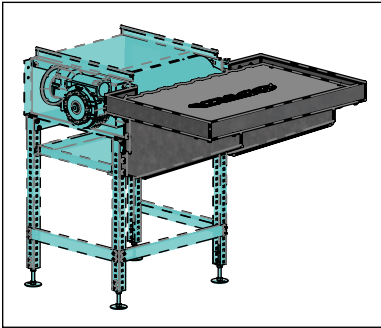




Installation Instructions

631728 - EGG COLLECTION TABLE CENTER MOUNT, COMMUNITY NEST



STEP 1: ASSEMBLE ITEMS (2) & (3) TO EGG BELT DRIVE UNIT, USING EIGHT EACH OF ITEMS (9) & (10).

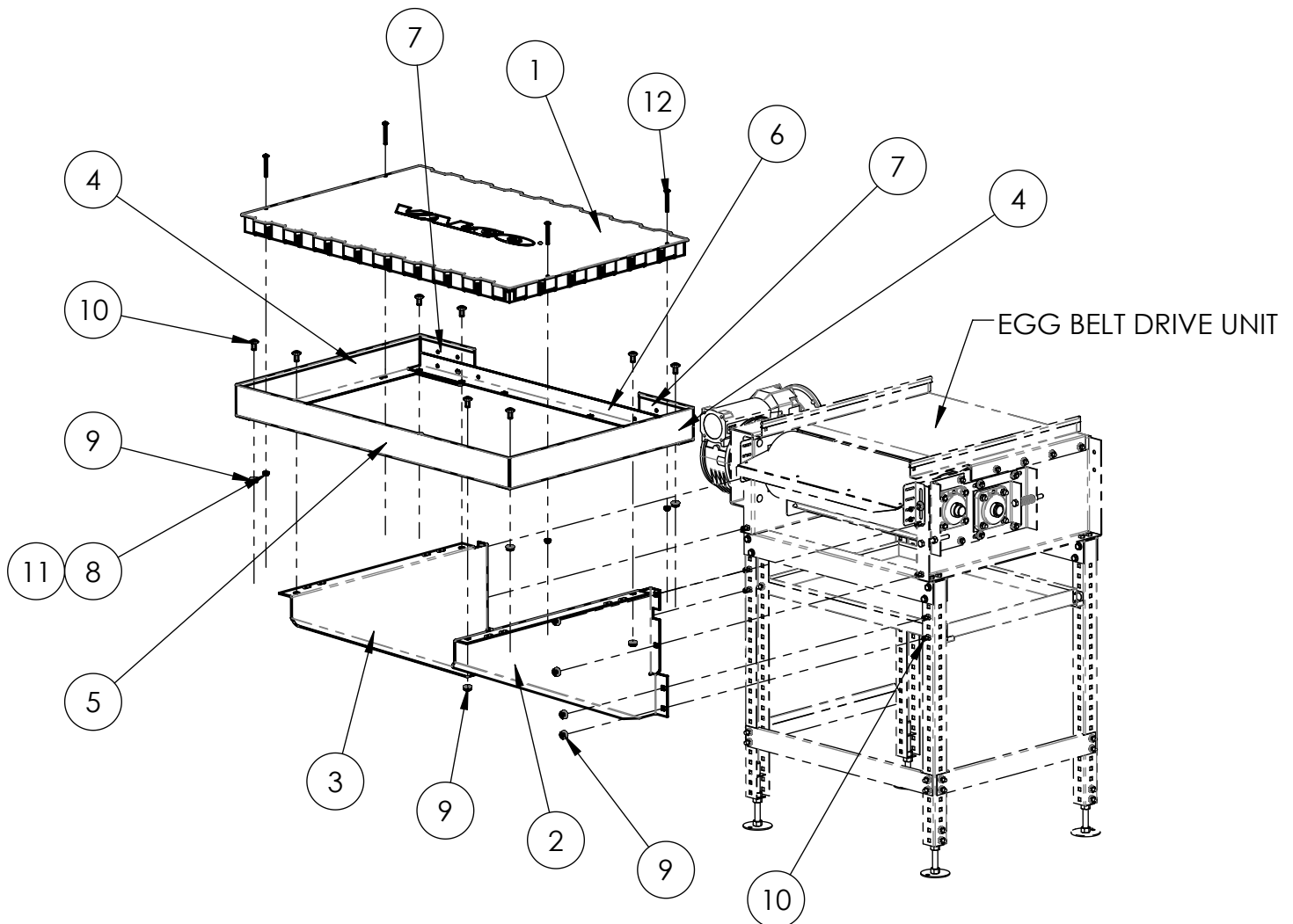
STEP 2: ASSEMBLE ITEM (5) TO ITEM (2) AND (3) USING ONE EACH OF ITEMS (9) & (10).

STEP 3: ASSEMBLE ITEM (6) TO ITEM (2) AND (3). ONLY INSTALL BOLT AT THIS TIME LEAVING NUT OFF.

STEP 4: ASSEMBLE ITEMS (7) TO BOTTOM SIDE OF FLANGE OF (2) & (3) USING SAME BOLT FROM STEP 3, SECURE EACH WITH NUT.

STEP 5: ASSEMBLE ITEMS (4) BELOW ITEM (5) AND BETWEEN ITEMS (6) & (7) SECURING WITH (2) EACH OF ITEMS (9) & (10).

STEP 6: INSERT ITEM (1) INTO ASSEMBLED FRAME, USING FOUR EACH OF ITEMS (8), (11), & (12) TO FINISH ASSEMBLY.



North America:

Phone: 800.99VALCO (800.998.2526)

Fax: 419.678.2200

Email: sales@val-co.com

990329 [-] 2/26/2024

Page 1

International:

Phone: (+1) 419.678.8731

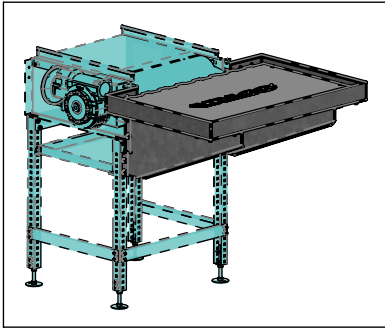
Fax: (+1) 419.678.2200

Email: intl.sales@val-co.com



Installation Instructions

631728 - EGG COLLECTION TABLE CENTER MOUNT, COMMUNITY NEST



STEP 1: ASSEMBLE ITEMS (2) & (3) TO EGG BELT DRIVE UNIT, USING EIGHT EACH OF ITEMS (9) & (10).

STEP 2: ASSEMBLE ITEM (5) TO ITEM (2) AND (3) USING ONE EACH OF ITEMS (9) & (10).

STEP 3: ASSEMBLE ITEM (6) TO ITEM (2) AND (3). ONLY INSTALL BOLT AT THIS TIME LEAVING NUT OFF.

STEP 4: ASSEMBLE ITEMS (7) TO BOTTOM SIDE OF FLANGE OF (2) & (3) USING SAME BOLT FROM STEP 3, SECURE EACH WITH NUT.

STEP 5: ASSEMBLE ITEMS (4) BELOW ITEM (5) AND BETWEEN ITEMS (6) & (7) SECURING WITH (2) EACH OF ITEMS (9) & (10).

STEP 6: INSERT ITEM (1) INTO ASSEMBLED FRAME, USING FOUR EACH OF ITEMS (8), (11), & (12) TO FINISH ASSEMBLY.

BILL OF MATERIALS

ITEM #	PART #	QTY	DESCRIPTION
1	631020GRY	1	SLAT, SOLID, RAL 7004-GRAY
2	631380	1	BRACE, SUPT, RH, EGG COL TABLE
3	631381	1	BRACE, SUPT, LH, EGG COL TABLE
4	631382	2	SIDE RAIL, EGG COLL TABLE
5	631383	1	OUTER RAIL, EGG COLL TABLE
6	631388	1	INNER RAIL, SUPT, EGG COLL TBL
7	631766	2	RAIL, INNER, TABLE, EGG
8	690012	4	NUT, HEX, K-LOCK, #10-24
9	690020	16	NUT, HEX, K-LOCK, 5/16-18
10	690027	16	SCREW, 5/16-18 X 3/4 CRG SH NK ZP
11	690032	4	WASHER, FLAT, #10
12	690047	4	BOLT, TRUSS, 10-24 X 2"

North America:

Phone: 800.99VALCO (800.998.2526)

Fax: 419.678.2200

Email: sales@val-co.com

990329 [-] 2/26/2024

Page 2

International:

Phone: (+1) 419.678.8731

Fax: (+1) 419.678.2200

Email: intl.sales@val-co.com