

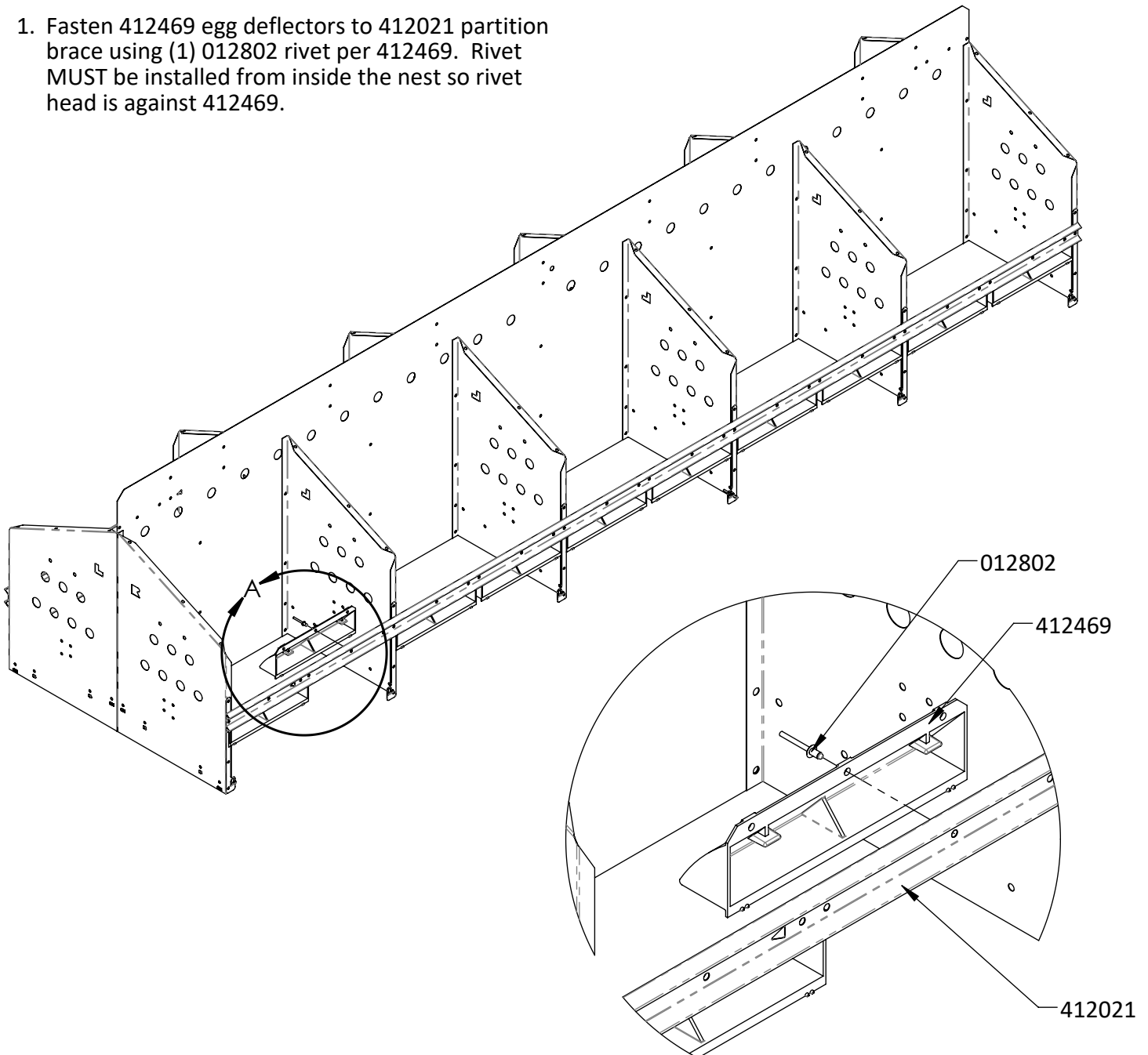


990381 Instructions

QUICKSHEET, TROUGH INSTALLATION

Installation Instructions:

1. Fasten 412469 egg deflectors to 412021 partition brace using (1) 012802 rivet per 412469. Rivet **MUST** be installed from inside the nest so rivet head is against 412469.

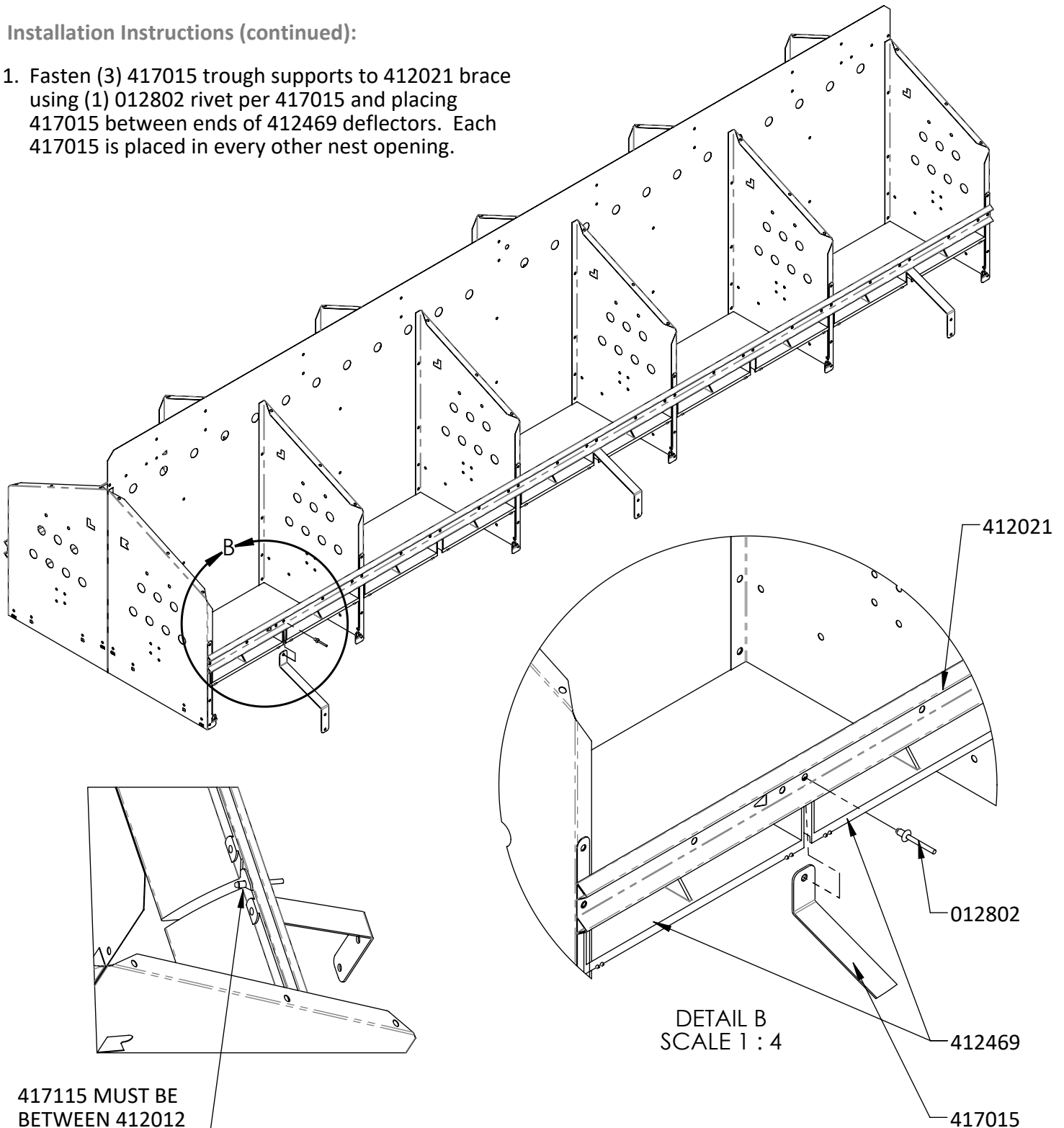


DETAIL A
SCALE 1 : 4



Installation Instructions (continued):

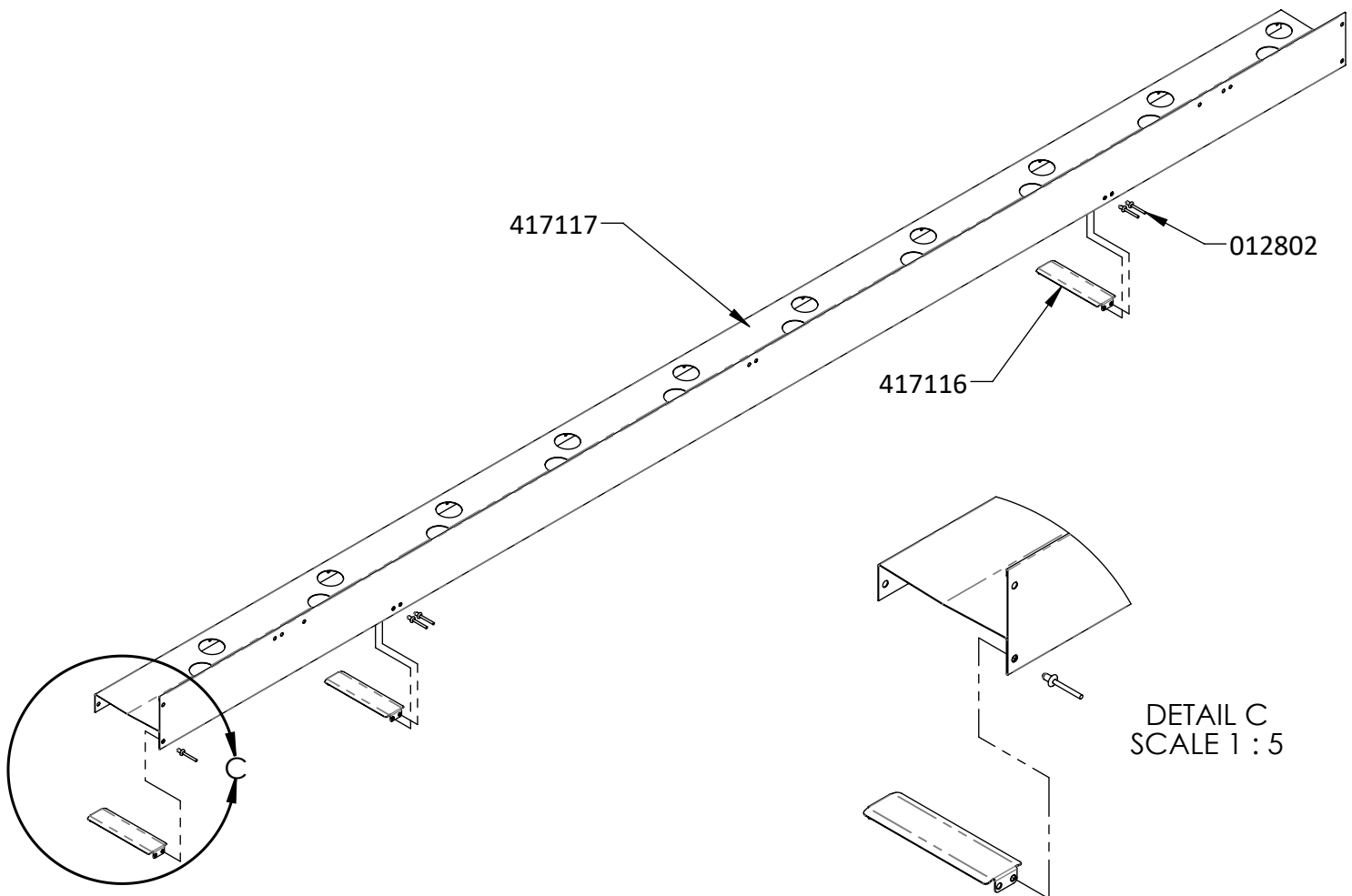
1. Fasten (3) 417015 trough supports to 412021 brace using (1) 012802 rivet per 417015 and placing 417015 between ends of 412469 deflectors. Each 417015 is placed in every other nest opening.





Installation Instructions (continued):

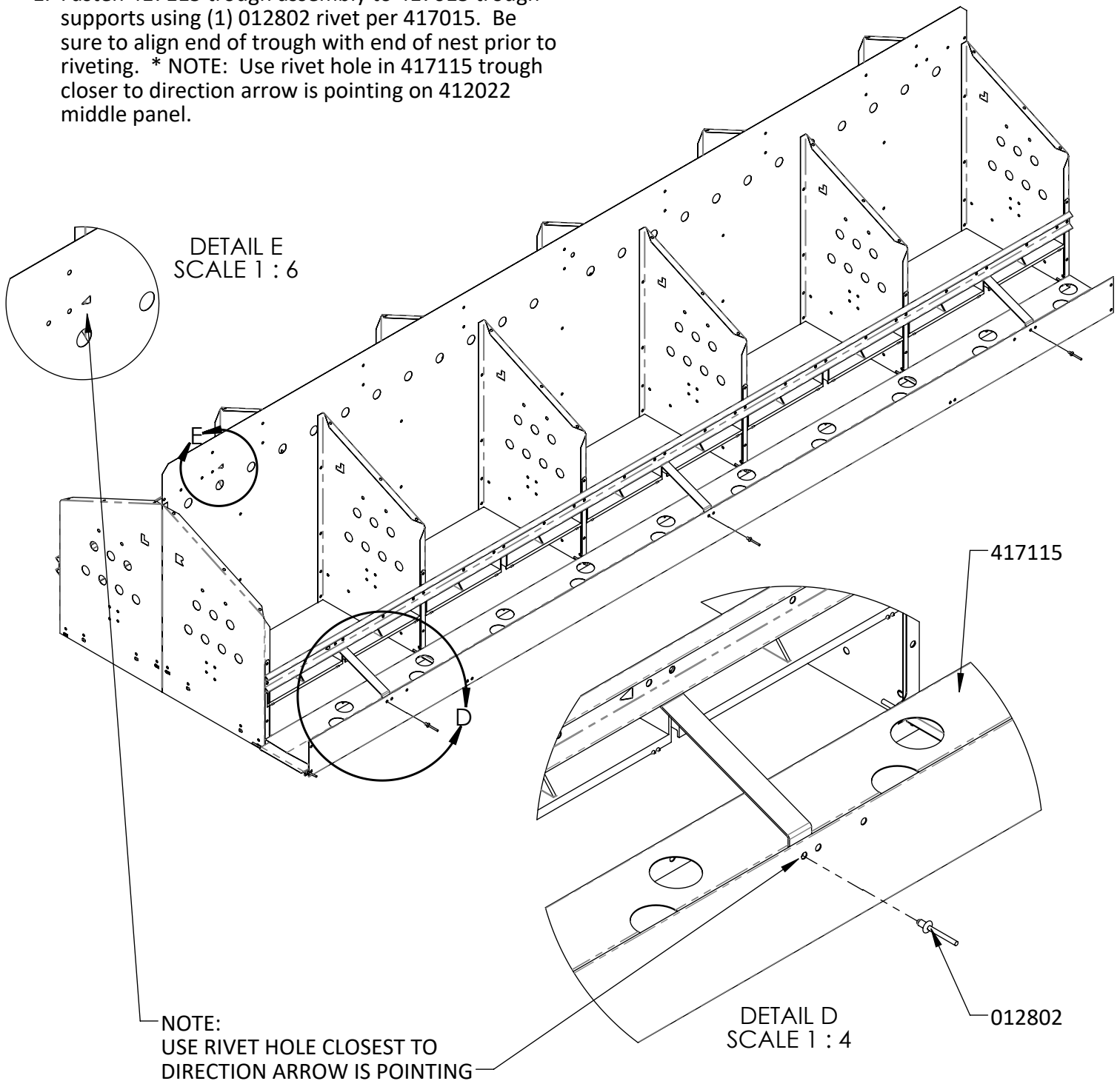
1. Fasten (2) 417116 belt guides to the front face of the 417115 trough, at each set of double rivet holes, using (2) 012802 rivets per belt guide.
2. Fasten (1) 417116 belt guide to the front face of the 417115 trough at one end using (1) 012802 rivet. The 417116 belt guide must have (1) rivet hole showing past the end of the trough for connection to the next nest or connecting trough.





Installation Instructions (continued):

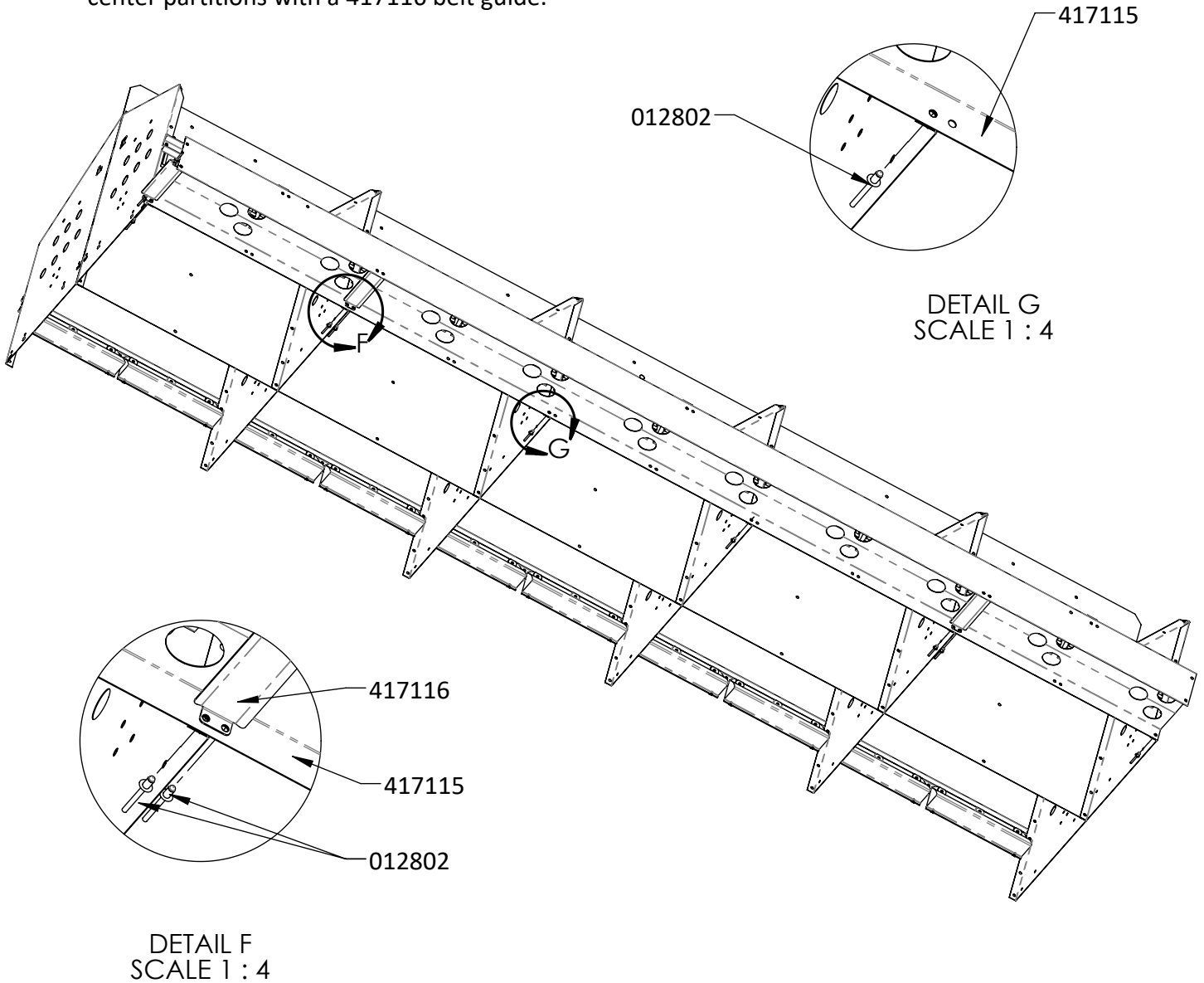
1. Fasten 417115 trough assembly to 417015 trough supports using (1) 012802 rivet per 417015. Be sure to align end of trough with end of nest prior to riveting. * NOTE: Use rivet hole in 417115 trough closer to direction arrow is pointing on 412022 middle panel.





Installation Instructions (continued):

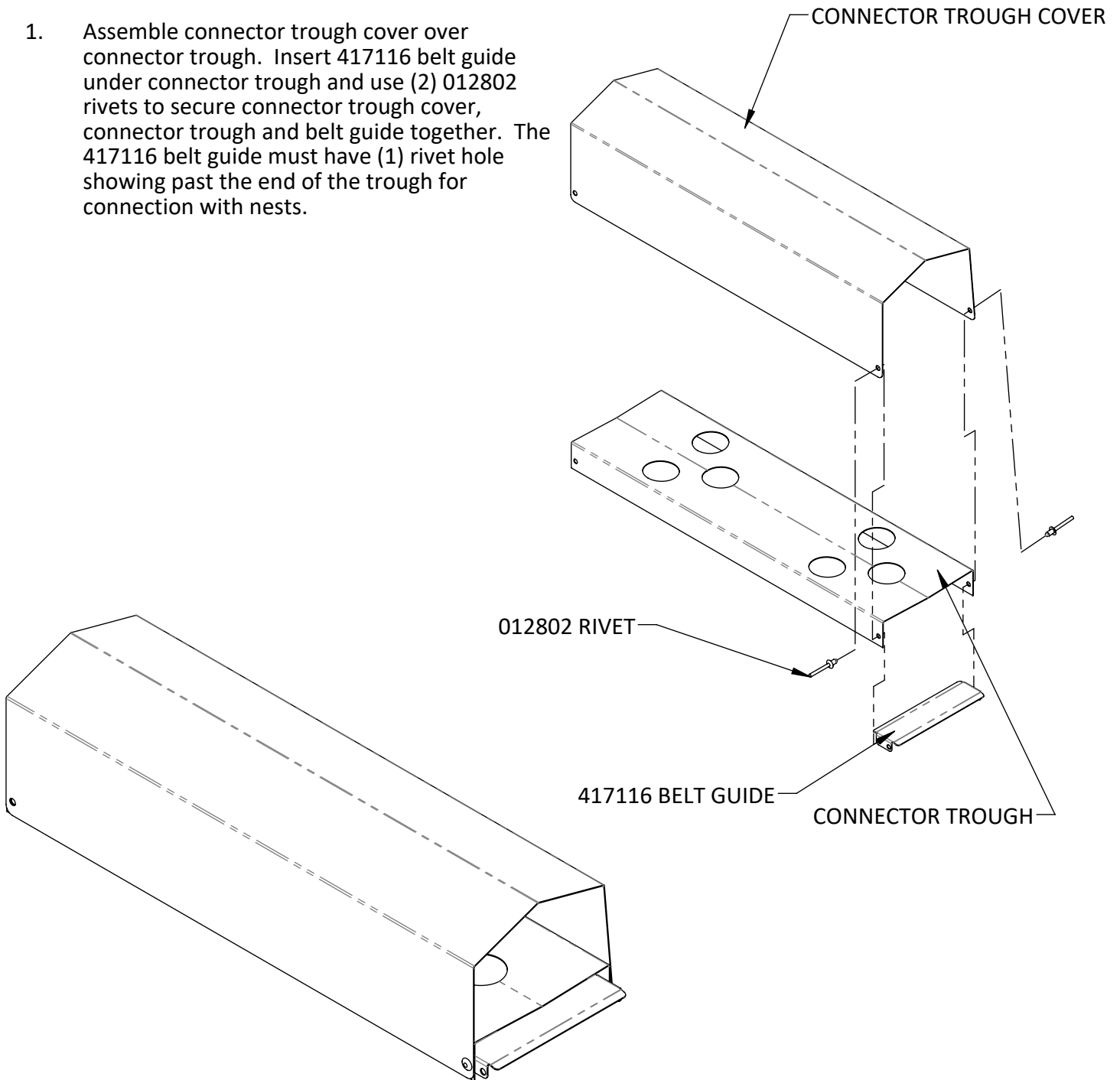
1. Fasten 417115 trough assembly to nest partitions using (8) 012802 rivets, (1) 012802 rivet used at each partition with no 417116 belt guide, and (2) 012802 rivets at the (2) center partitions with a 417116 belt guide.





Installation Instructions (continued):

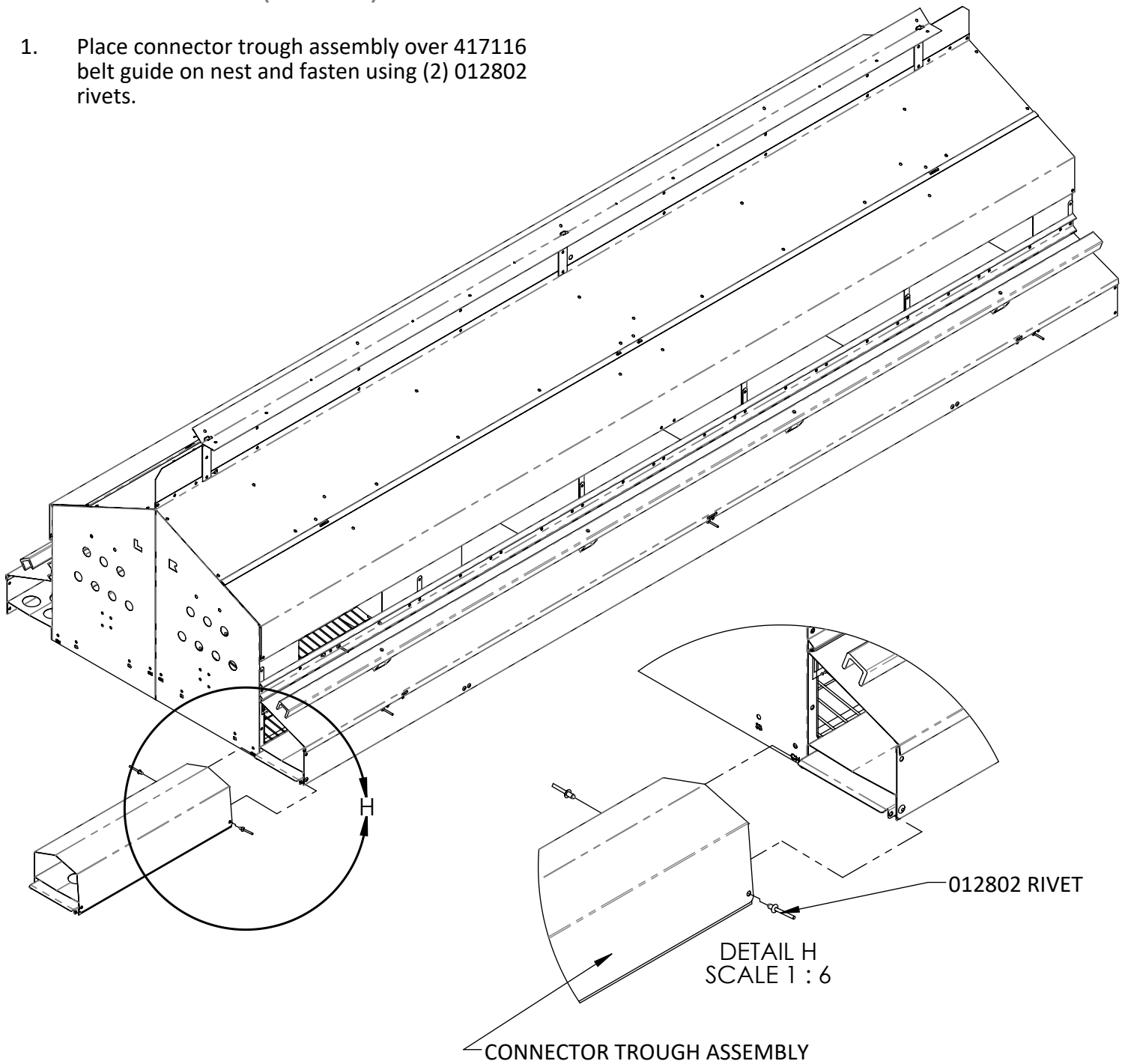
1. Assemble connector trough cover over connector trough. Insert 417116 belt guide under connector trough and use (2) 012802 rivets to secure connector trough cover, connector trough and belt guide together. The 417116 belt guide must have (1) rivet hole showing past the end of the trough for connection with nests.





Installation Instructions (continued):

1. Place connector trough assembly over 417116 belt guide on nest and fasten using (2) 012802 rivets.



North America:

Phone: 800.99VALCO (800.998.2526)
Fax: 419.678.2200
Email: sales@val-co.com

990381 [-] 11/24/2025
Page 7

International:

Phone: (+1) 419.678.8731
Fax: (+1) 419.678.2200
Email: intl.sales@val-co.com