

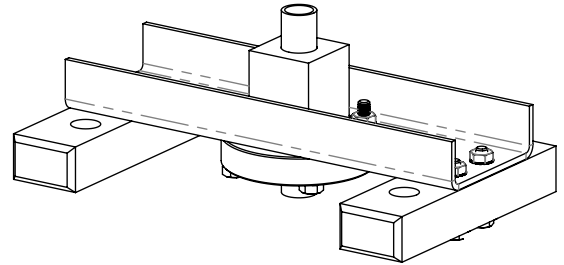


Quick Sheet Instructions

LOAD BLOCK ASSY, BALL SCREW 970313

Overview:

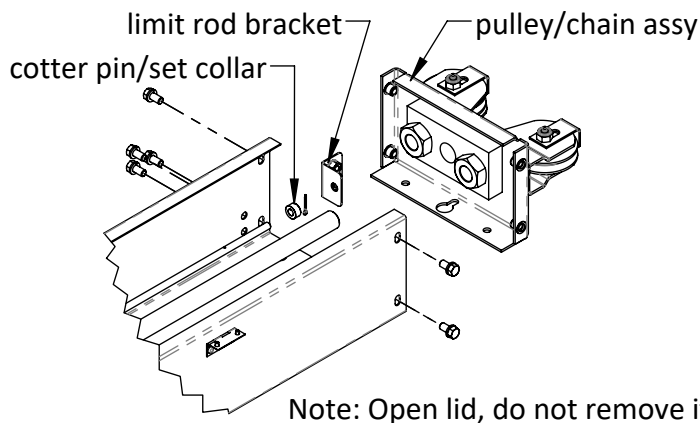
The following instructions are for replacing the 970313 load block assembly on ballscrew curtain machines. Please note, the 970800 ball screw nut is not a reusable component. If it is removed from the ballscrew the steel balls will fall out, rendering it unusable. Follow the instructions closely to ensure that the steel balls do not fall out during the assembly process.



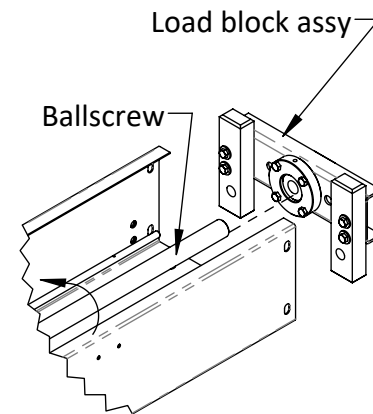
Installation Instructions:

1. Follow lock-out tag-out procedures for disconnecting electrical power to the curtain machine.
2. Ensure load is safely disconnected from the curtain machine.
3. Disconnect cables or chain from the load block and remove from the curtain machine.
4. Disengage lovejoy or clutch such that ball screw can be turned easily by hand.

5. Remove (4) fasteners connecting top pulley/chain assembly to the curtain machine.
5A. Remove (2) fasteners connecting the limit rod bracket to the curtain machine.
5B. Remove cotter pin and set collar from limit rod.



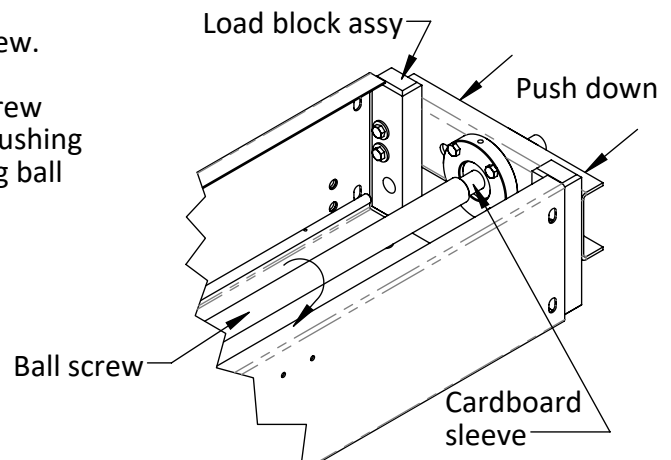
6. Rotate ball screw by hand as shown until load block assembly is removed from top of ballscrew.



7. Align cardboard sleeve of ball screw nut with ball screw.

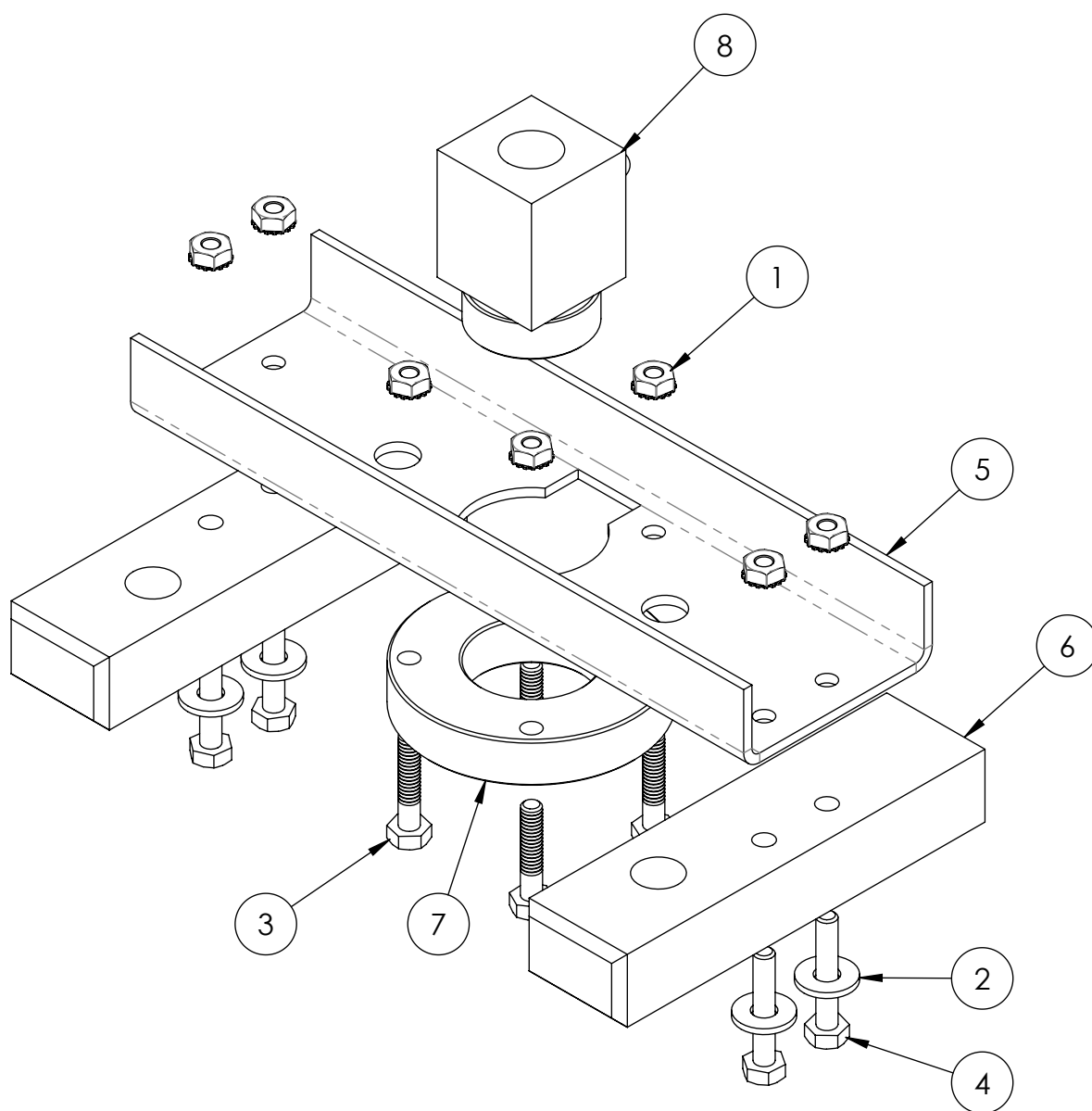
7A. While maintaining downward pressure, turn ball screw clockwise against end of the cardboard sleeve, slowly pushing the sleeve through the ball screw nut. Continue rotating ball screw clockwise until it is back in the original position.

NOTE: Failure to follow step 6 may result in a compromised 970800 ball screw nut.



8. Reverse steps 4 through 5B to reassemble curtain machine prior to reattaching load and reconnecting electricity.

Installation Instructions (continued):



Parts List

Item No.	Part No.	Description	Qty
Assembly part no - Assembly desc			
1	690003	HEX NUT, K-LOCK 1/4-20	8
2	690038	WASHER, FLAT, 1/4"	4
3	690133	HEX BOLT, 1/4-20 X 1-1/4"	4
4	690191	HEX BOLT, 1/4-20 X 1-1/2"	4
5	970007	BLOCK, BALL LOAD	1
6	970049	BEARING, SLIDING	2
7	970066	BALL LOCKING NUT	1
8	970800	BALL SCREW NUT	1

North America:

Phone: 800.99VALCO (800.998.2526)

Fax: 419.678.2200

Email: sales@val-co.com

990333 [-] 3/13/2024

Page 2

International:

Phone: (+1) 419.678.8731

Fax: (+1) 419.678.2200

Email: intl.sales@val-co.com