



# Quick Sheet Instructions

## Curtain Machine Electrical Upgrade Kit Gen2 SafeTRAC To ATLAS

### WARNING



- Disconnect electrical power and remove all load from machine before servicing the machine. Remember that CLUTCH based machines will DROP THE CURTAINS OR INLETS WHEN POWER IS DISCONNECTED. BE CAREFUL!
- WIRING MUST BE DONE BY A LICENSED ELECTRICIAN. ALL LOCAL AND NATIONAL CODES MUST BE FOLLOWED!
- **ATTENTION, IF 24" MACHINE! The machine will run backwards if these instructions are not followed. If the machine you are upgrading is a 24" 9704xx (gen2), the motor wires 001 & 002 must be reversed from what is shown on wire decal on inside of control box lid. Follow all other wire instructions as shown on wire decal.**

### Read & Understand entire instruction sheet before performing any work!

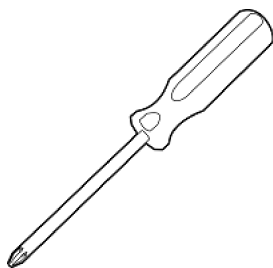
Upgrade Kit Part Numbers for Weather Resistant Curtain Machines:

- 970545: Upgrade kit for Ball screw 220V (contains wires for clutch, if so equipped)
- 970547: Upgrade kit for Acme screw 220V
- 970548: Upgrade kit for Acme screw 110V

### Tools Needed:



Wire Terminal Crimper And  
Wire Cutter



Philips  
Screwdriver

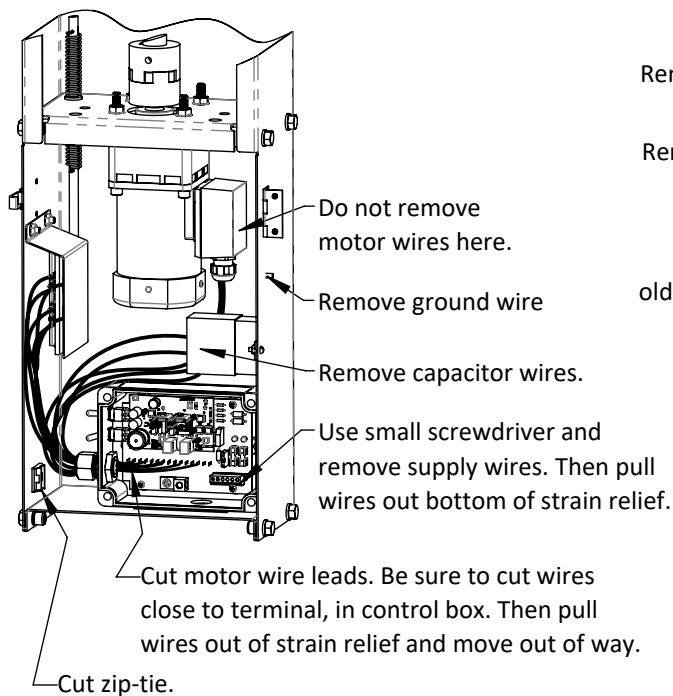


Small Straight  
Screwdriver

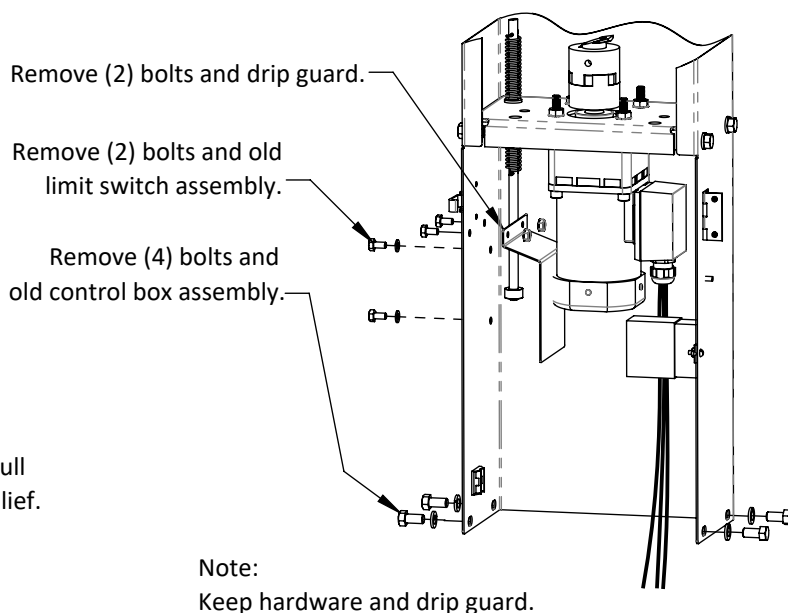


Socket Set Or  
Wrenches

### Step 1.) Disconnect wires.

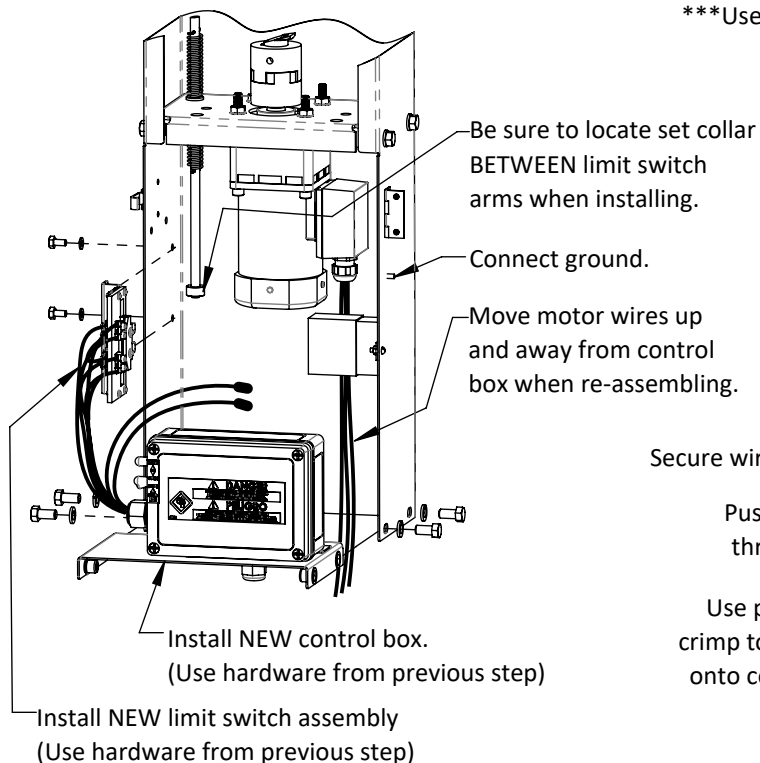


### Step 2.) Remove old control box & limit switch.



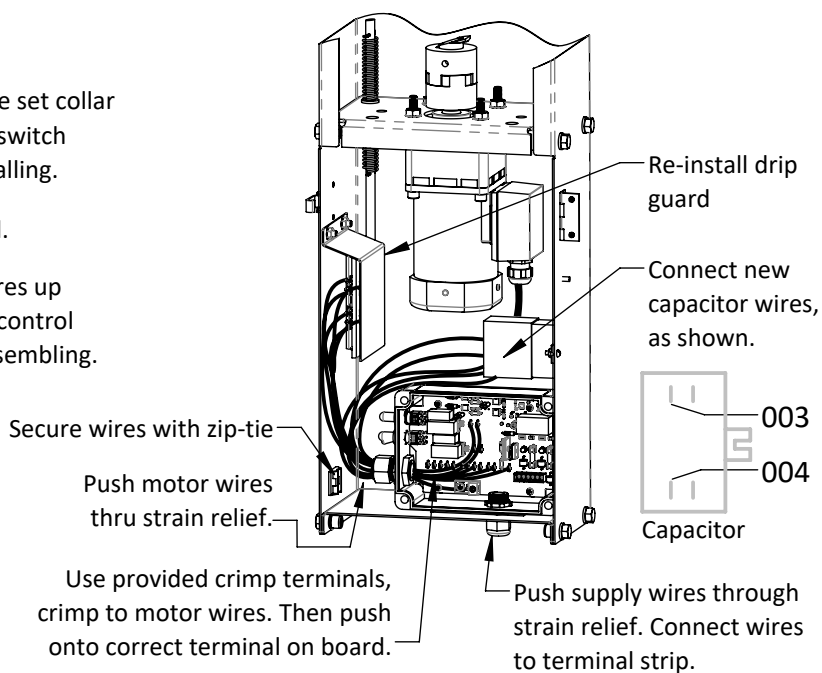
## Installation Instructions (continued):

### Step 3.) Install NEW components.



### Step 4.) Connect motor wires.

\*\*\*Use wire connection decal on inside of control box lid for reference.

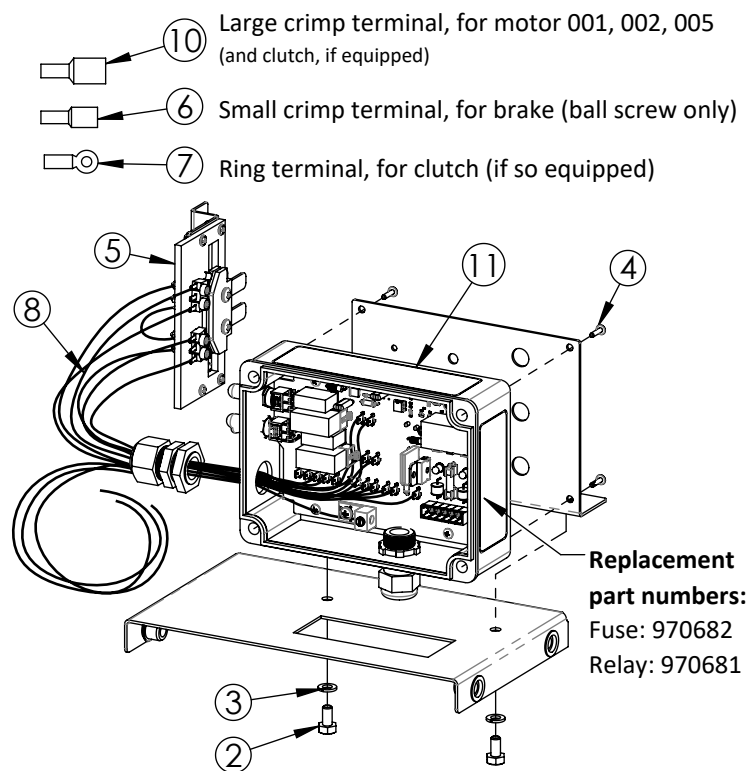


### Step 5.) Test Machine

Re-connect electrical power, and then test machine direction and limit switches. After verifying operation, re-attach load.

## Parts List

Item No.	Part No.	Description	Qty
<b>COMMON PARTS</b>			
1	610607	ZIP TIE, 3.6 IN X .093 W	3
2	690077	SCREW, 1/4-20 X 1/2 HHCS ZP	2
3	690209	LOCK WASHER, 1/4 ZP	2
4	690354	SCREW, #8-18 X 1/2 PPHMS ZP	4
5	970464	LIMIT SWITCH ASSEMBLY	1
<b>970545 - 220V BALL SCREW</b>			
6	690348	CRIMP TERMINAL, SMALL (BRAKE)	3
7	921299	RING TERMINAL (CLUTCH)	2
8	921632	WIRE HARNESS, BALL SCREW	1
9	921634	WIRE DECAL, BALL 220V (INSIDE LID)	1
10	970079	CRIMP TERMINAL, LARGE (MOTOR)	5
11	970463	CONTROL ASSEMBLY, 220V PCB	1
<b>970547 - 220V ACME</b>			
8	921633	WIRE HARNESS, ACME SCREW	1
9	921635	WIRE DECAL, ACME 220V (INSIDE LID)	1
10	970079	CRIMP TERMINAL, LARGE (MOTOR)	4
11	970463	CONTROL ASSEMBLY, 220V PCB	1
<b>970548 - 110V ACME</b>			
8	921633	WIRE HARNESS, ACME SCREW	1
9	921638	WIRE DECAL, ACME 110V (INSIDE LID)	1
10	970079	CRIMP TERMINAL, LARGE (MOTOR)	4
11	970462	CONTROL ASSEMBLY, 110V PCB	1



## North America:

Phone: 800.99VALCO (800.998.2526)  
Fax: 419.678.2200  
Email: sales@val-co.com

990192 [-] 3/15/2018  
Page 2

## International:

Phone: (+1) 419.678.8731  
Fax: (+1) 419.678.2200  
Email: intl.sales@val-co.com