



# Quick Sheet Instructions

## Hemisphere Chimney Actuation Conversion Kit

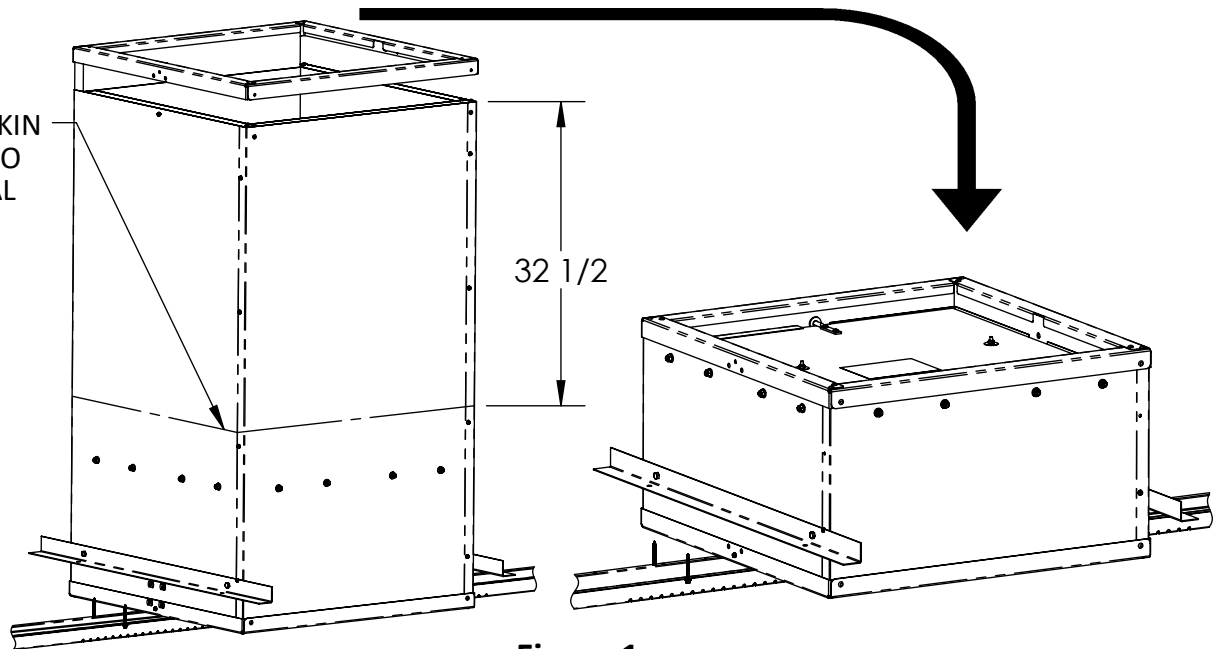


### Installation Instructions:

#### Steps:

1. Set actuator to have inlet in closed position.
2. Disconnect cords from homerun line.
3. Trace a line around the panels of the chimney ( 32 1/2" From the top). Using a saw, cut the perimeter shown in **Figure 1**. Remove the top Aluminum cap (P-N SMP8016) and then reinstall on the newly cut section.

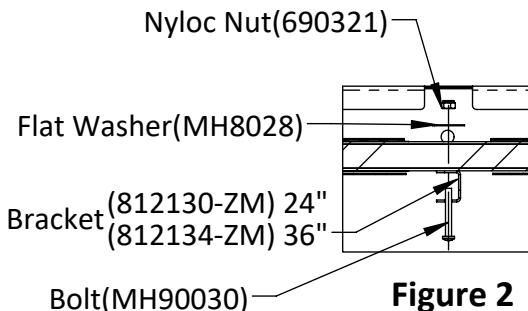
CAUTION: CHIMNEY SKIN MAY BE ALUMINUM SO USE A MULTIMATERIAL BLADE TO CUT.



**Figure 1**

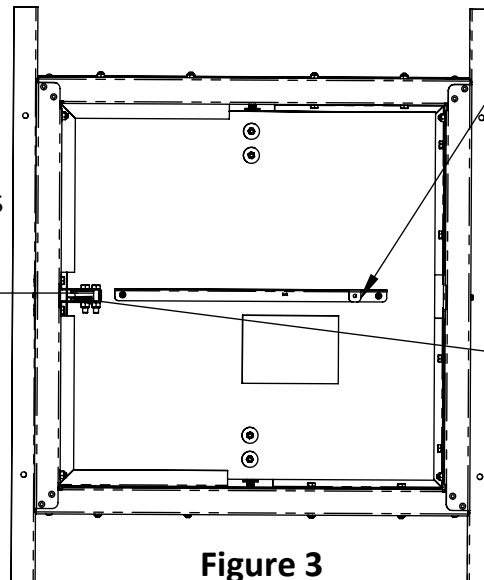
**Bottom view:** Trough not shown for visibility.

4. Install cable and spring bracket on the bottom of the damper door as shown in **Figure 3** using (2) #10-24 x 1-1/2" Bolts, (2) Flat Washers, (2) Nyloc nuts to hold the bracket to the damper door. Hardware shown in **Figure 2**.



**Figure 2**

ARROW SHOWS  
DIRECTION OF  
ACTUATOR



**Figure 3**

**Note:** Position of tab in relation to the pulley.

If replacing the pulley, use (4) #10 x 3" Screws (P-N 690442) to install.

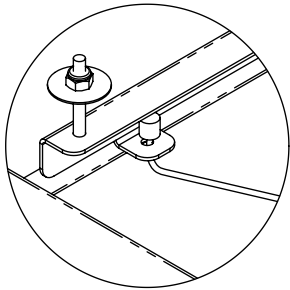


# Quick Sheet Instructions

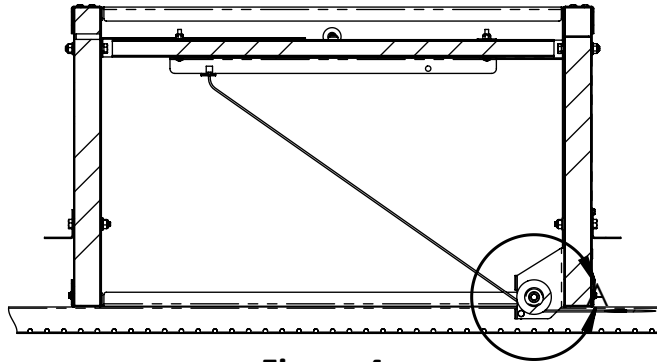
## Hemisphere Chimney Actuation Conversion Kit

### Installation Instructions Continued:

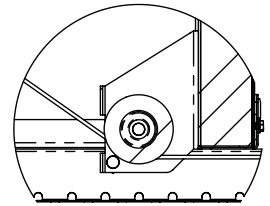
5. Install the new cable (P-N 812103) through the bracket and run it through the pulley located above the trough shown in the section view in **Figure 4**. Attach to homerun line.



Detailed view of cable attached to bracket.

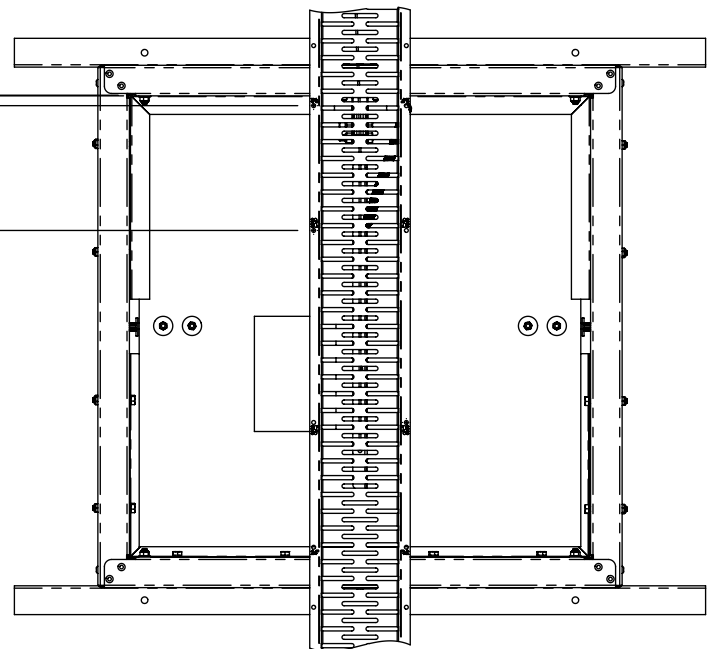
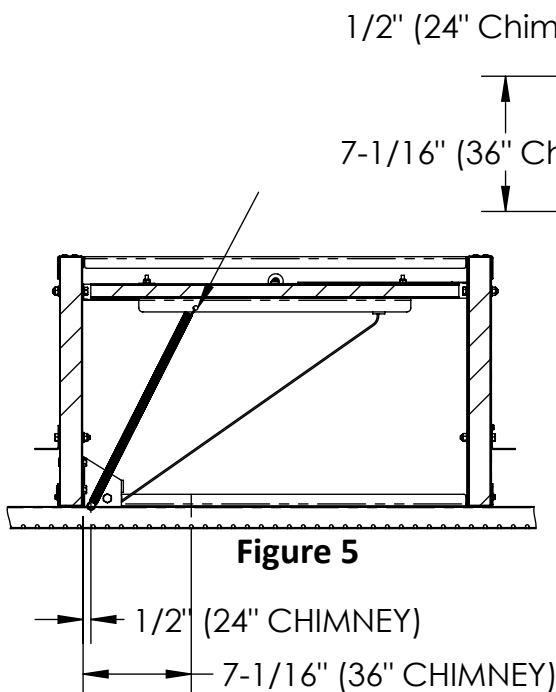


**Figure 4**



DETAIL A  
SCALE 1 : 5

6. Install the new spring for the damper (P-N FP831) through the hole located on the other side of the bracket from where the cable attaches as seen in **Figure 5**. The other end should then be hooked through the hole in the trough that is specific to the chimney size. This ensures the proper tension is applied.

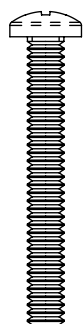


**Figure 6**

If an older version of the trough is being used, a 3/16" hole will need to be drilled to mount the spring.

## Complete Parts List For Conversion

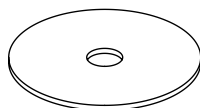
	Item No.	Part No.	Description	Qty
	<b>Hemisphere Chimney part no - 812245/812265/812365/812385</b>			
NEEDED:	1	690321	BOLT, 10-24 X 1-1/2 PHILLIPS SS	2
	2	812130-ZM	CABLE AND SPRING CHANNEL, FOR <b>24"</b>	1
		812134-ZM	CABLE AND SPRING CHANNEL, FOR <b>36"</b>	1
	3	812459	DANGER DECAL, NO STEP	1
	4	FP831	SPRING, DAMPER DOOR, 12-3/4" LONG	1
	5	MH8028	WASHER, FLAT, 3/16" ID, SS	2
OPTIONAL:	6	MH90030	NUT, HEX NYLOC #10-24, SS	2
	7	690442	SCREW, #10 X 3" WITH SEAL	4
	8	812103	CABLE, 86" LONG WITH STOP	1
	9	812120	PULLEY ASSEMBLY, SINGLE, VERTICAL MOUNT	1
	10	972029	GUARD, HOMERUN CABLE, 102.5" LONG	1



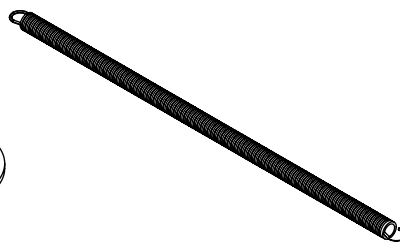
#10-24 x 1-1/2 Bolt  
690321



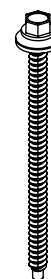
#10-24 SS  
Nyloc Nut  
MH90030



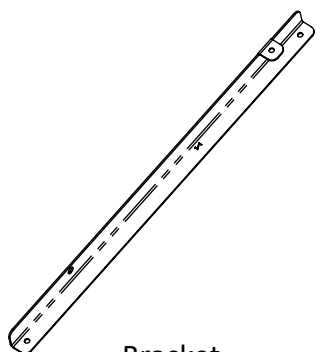
3/16" ID x 1" OD  
Flat Washer  
MH8028



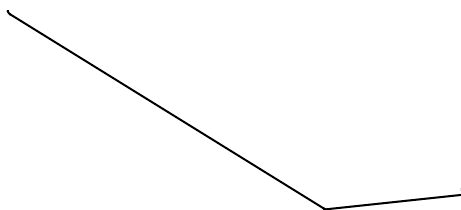
Damper Door Spring  
FP831



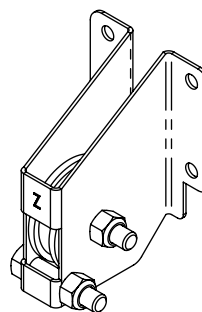
#10 x 3" Screw w/seal  
690442



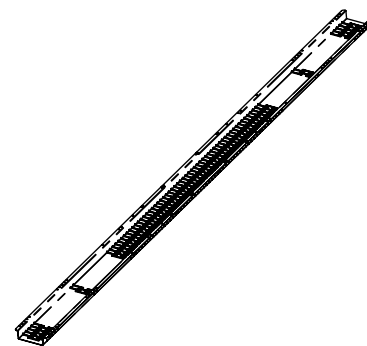
Bracket  
812130-ZM/812134-ZM



Cable  
812103



Single Pulley  
812120



Homerun Cable Guard  
972029

### North America:

Phone: 800.99VALCO (800.998.2526)  
Fax: 419.678.2200  
Email: sales@val-co.com

### International:

Phone: (+1) 419.678.8731  
Fax: (+1) 419.678.2200  
Email: intl.sales@val-co.com