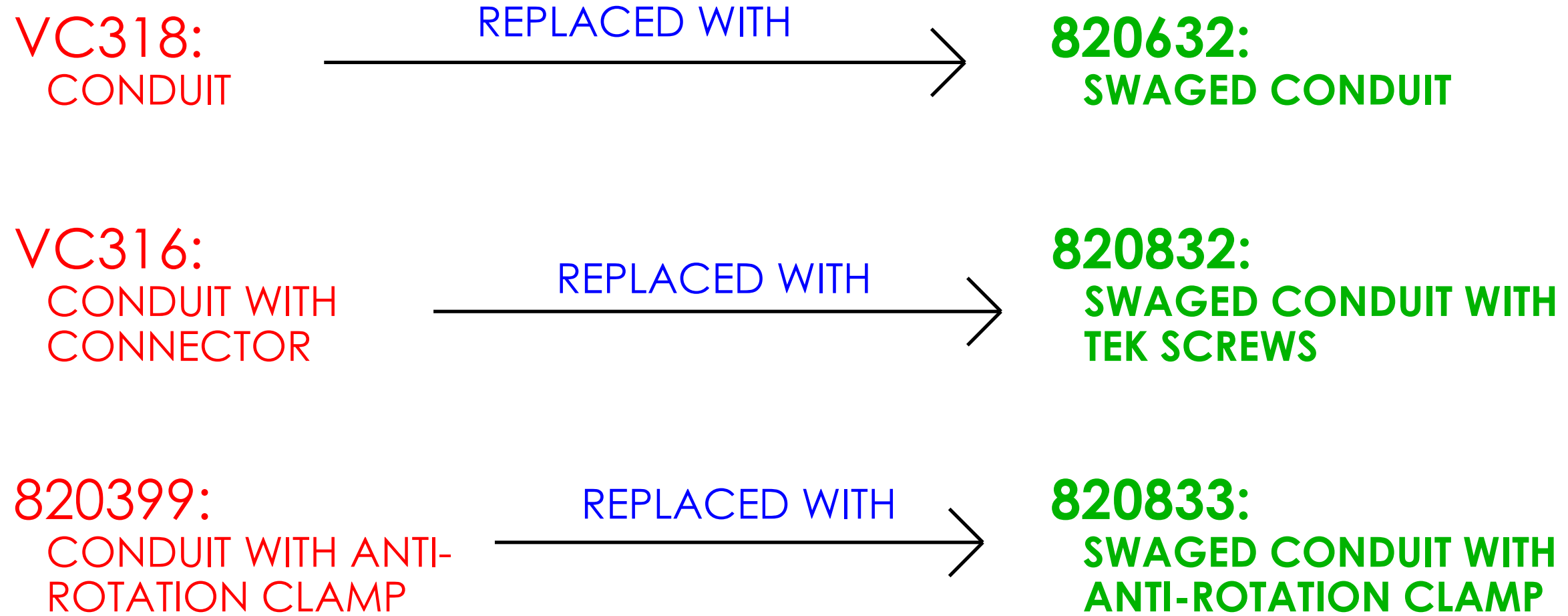



# QUICK REFERENCE

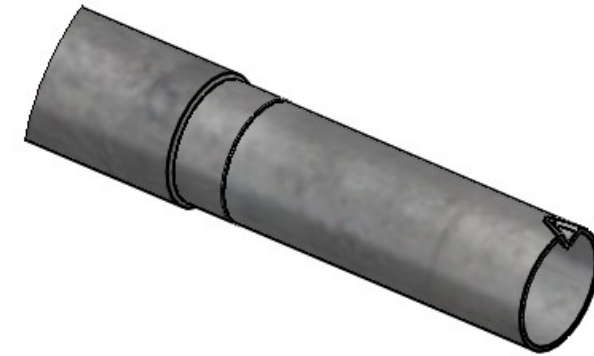
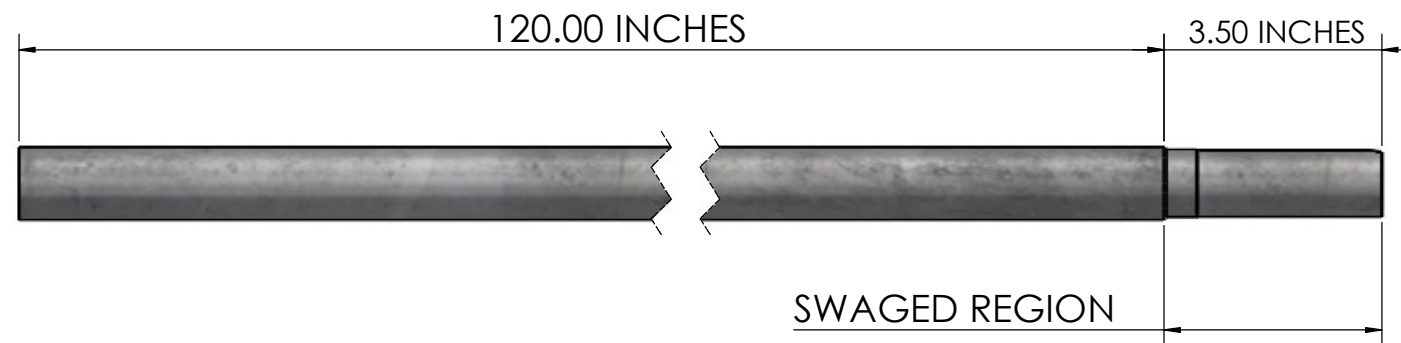


**WITH NEW 820632 SWAGED CONDUIT:**

- 820632 SWAGED CONDUIT CONNECTS SECTIONS TOGETHER BY INSERTING THE SWAGED END OF CONDUIT "A" INTO THE NON-SWAGED END OF CONDUIT "B".
- 820632 CONDUIT SECTIONS ARE THEN REINFORCED WITH TEK SCREWS.
- 820632 SWAGED CONDUIT CAN BE INSTALLED INTO A SECTION OF VC318 NON-SWAGED CONDUIT.
- 820422 CONNECTOR AND VC317 COUPLER ARE NOT NEEDED TO JOIN SWAGED CONDUIT SECTIONS TOGETHER.
- VC318 CAN BE MANUFACTURED BY CUTTING OFF THE SWAGED END OF 820632.

REV	ECO#	DESCRIPTION	DATE	BY
-	17355	RELEASE	4/1/2026	JTS
<small>UNSPECIFIED TOLERANCES 2 PLACE ±.060 3 PLACE ±.030 4 PLACE ±.010 HOLE DIA. ±.010 ANGULAR ±1°</small>		<small>DIMENSIONS ARE IN INCHES DIMENSIONS IN [ ] ARE MILLIMETERS UNLESS OTHERWISE SPECIFIED, DO NOT SCALE</small>	 <b>VALCO INDUSTRIES, INC.</b> PO BOX 8 NEW HOLLAND, PA 17557	
<small>This drawing and any print thereof is the property of VALCO COMPANIES INC. and is subject to return on request by this company. The information shown is confidential and the recipient by accepting this drawing agrees not to use any information contained therein in any manner which will be detrimental to VALCO COMPANIES INC.</small>		DATE 4/1/2026 DRAWN JTS CHECK JTS	DESCRIPTION 1 QUICKSHEET DESCRIPTION 2 VC318 TO 820632 CHANGEOVER	
WEIGHT		SCALE 1:2	SHEET 1 OF 4	990390
				REV. -

# NEW 820632 SWAGED CONDUIT

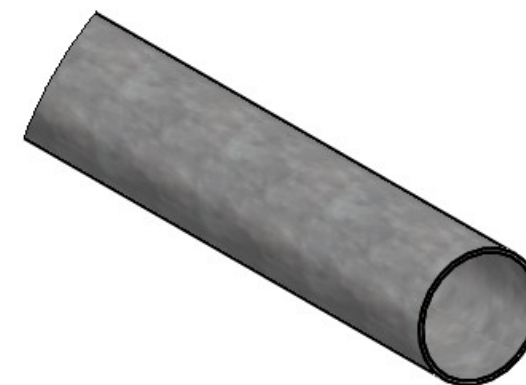
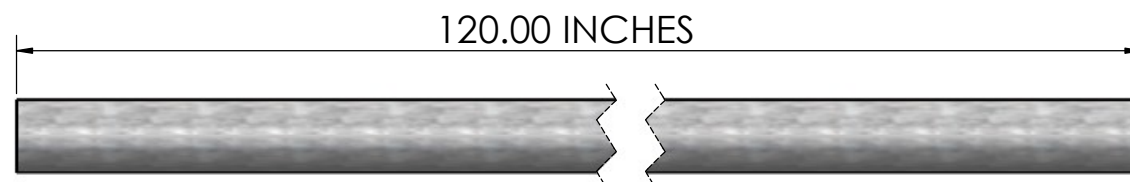


## SWAGED END

INSERTS INTO THE NEXT CONDUIT SECTION WITHOUT THE NEED FOR AN 820422 CONNECTOR

---

# PREVIOUS VC318 NON-SWAGED CONDUIT



## NON-SWAGED END

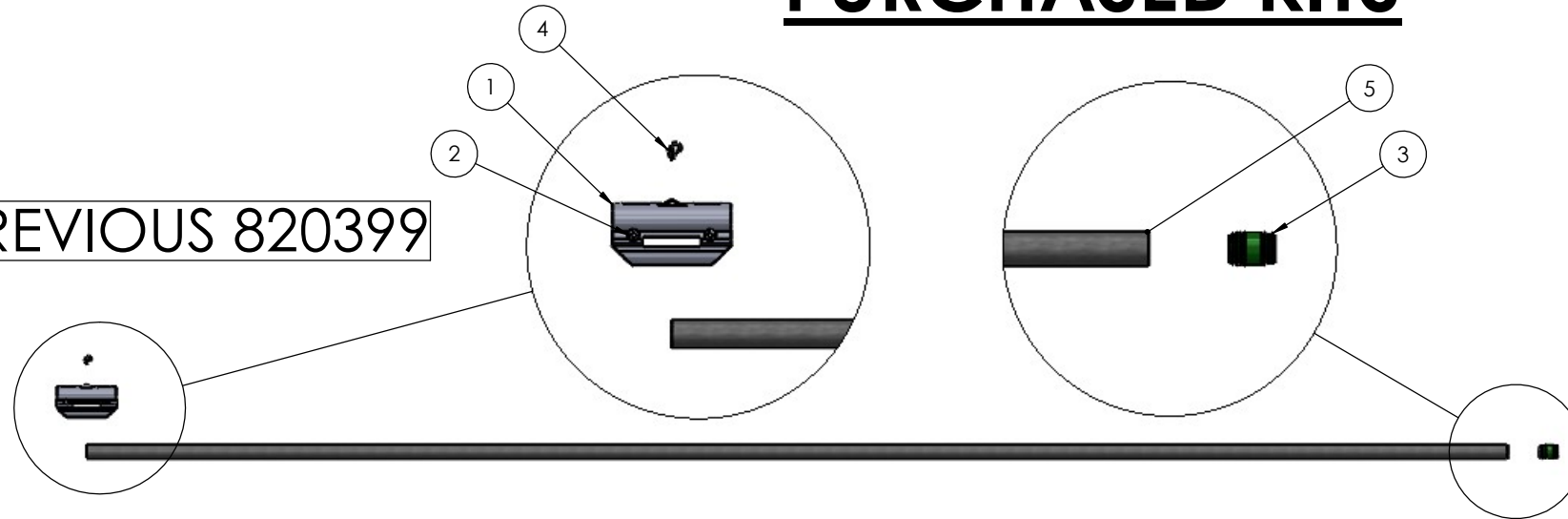
NEEDS AN 820422 CONNECTOR TO JOIN CONDUIT SECTIONS TOGETHER

820422  
CONDUIT CONNECTOR



# PURCHASED KITS

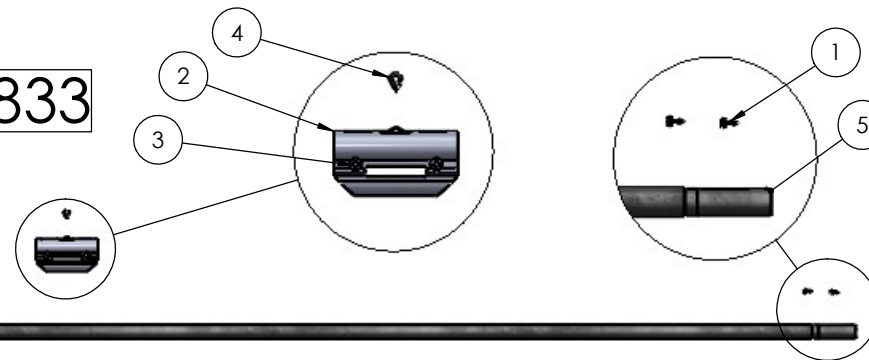
**PREVIOUS 820399**



PREVIOUS 820399 - BILL OF MATERIALS			
ITEM #	PART #	DESCRIPTION	QTY.
1	820347	ANTI-ROTATION CONDUIT CLAMP	1
2	820413	1/4-20X 1" PHILLIPS ROUND HEAD, MACHINE SCREW	2
3	820422	1.163 OD CONDUIT CONNECTOR	1
4	820522	HOOK, OPEN X CLOSED, 11 GA, 0.45" USABLE LENGTH	1
5	VC318	CONDUIT, 1" EMT, 10 FT LONG	1

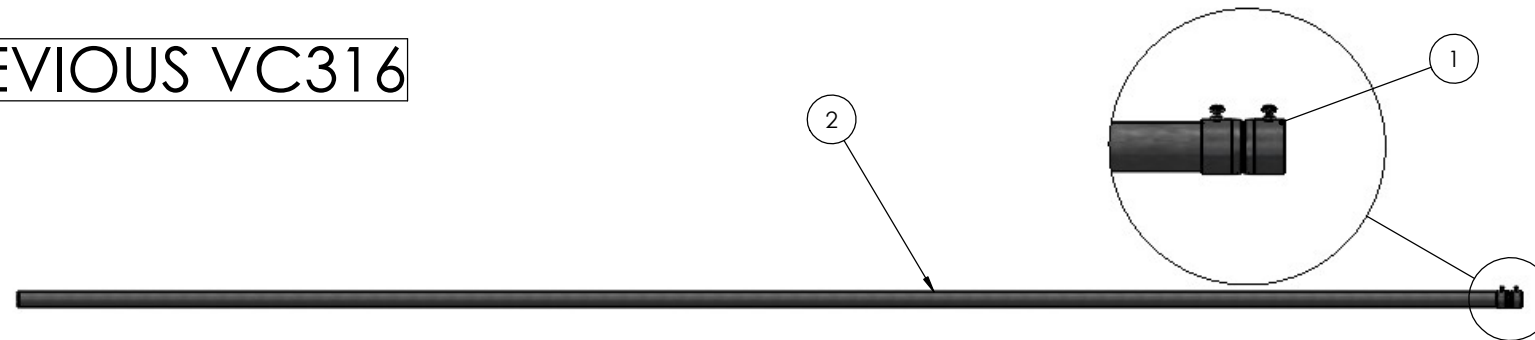
**820399 REPLACED WITH 820833**

- VC318 REPLACED WITH 820632
- REMOVED 820422 CONNECTOR
- ADDED (2) 690112 SCREWS



NEW 820833 - BILL OF MATERIALS			
ITEM #	PART #	DESCRIPTION	QTY.
1	690112	10 X 1/2" TEK SCREW	2
2	820347	ANTI-ROTATION CONDUIT CLAMP	1
3	820413	1/4-20X 1" PHILLIPS ROUND HEAD, MACHINE SCREW	2
4	820522	HOOK, OPEN X CLOSED, 11 GA, 0.45" USABLE LENGTH	1
5	820632	CONDUIT, 1.163"ODX.038"TX10'L, SWAGED	1

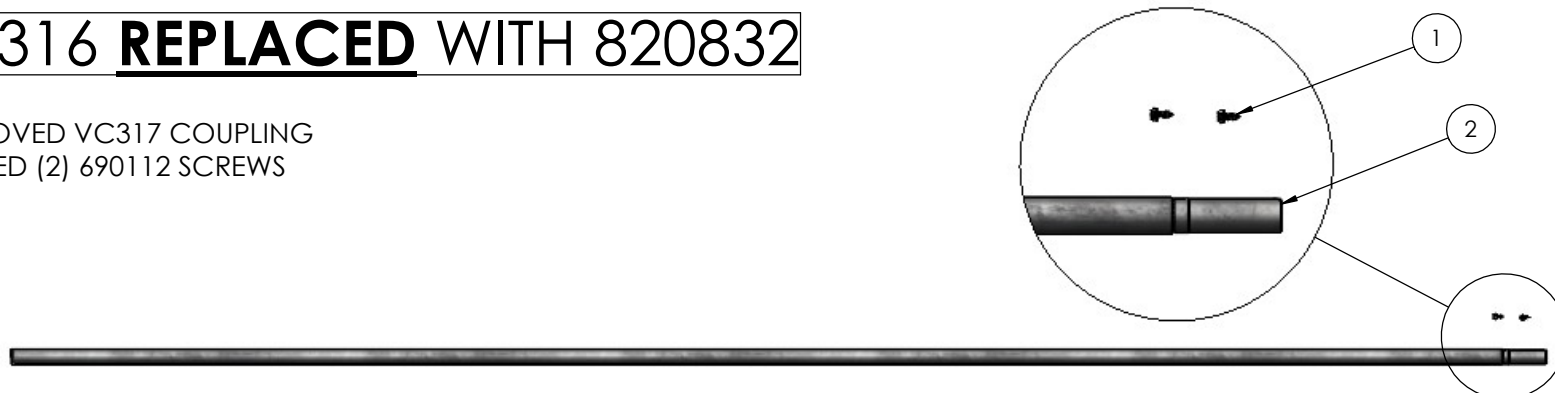
**PREVIOUS VC316**



PREVIOUS VC316 - BILL OF MATERIALS			
ITEM #	PART #	DESCRIPTION	QTY.
1	VC317	1" (1.163 OD) METAL CONDUIT COUPLING	1
2	VC318	CONDUIT, 1" EMT, 10 FT LONG	1

**VC316 REPLACED WITH 820832**

- REMOVED VC317 COUPLING
- ADDED (2) 690112 SCREWS

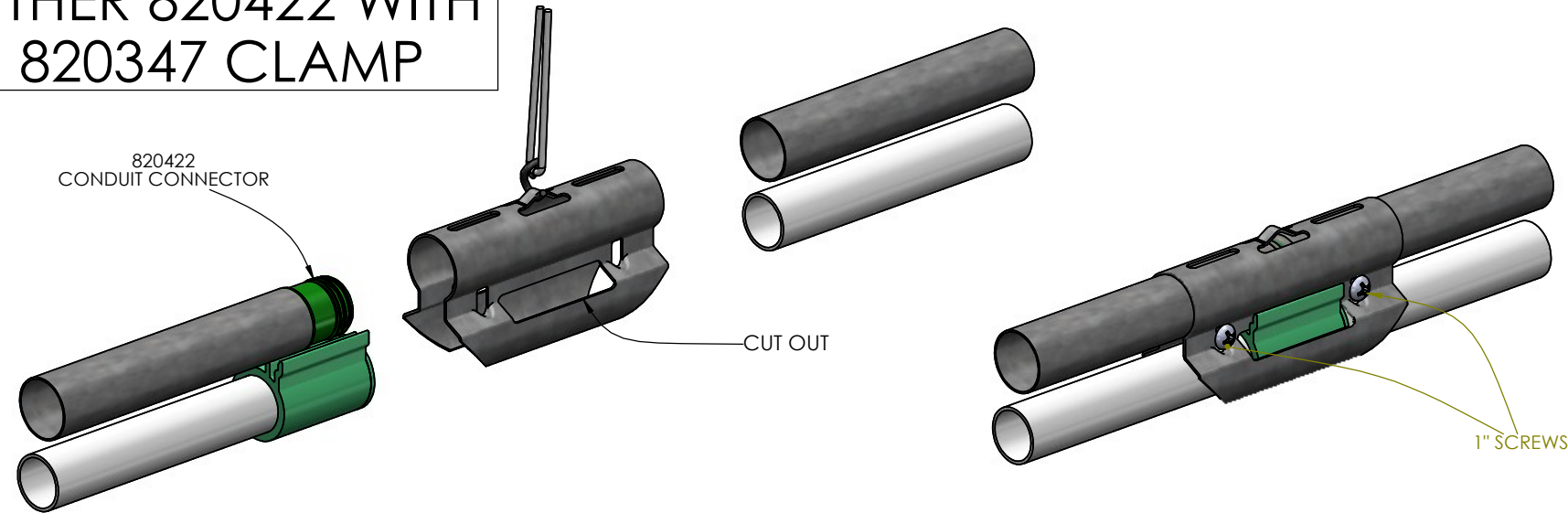


NEW 820832 - BILL OF MATERIALS			
ITEM #	PART #	DESCRIPTION	QTY.
1	690112	10 X 1/2" TEK SCREW	2
2	820632	CONDUIT, 1.163"ODX.038"TX10'L, SWAGED	1

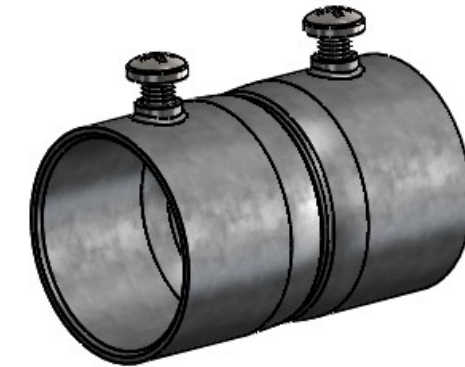
## PREVIOUS VC318 CONDUIT INSTALLATION

EITHER 820422 WITH  
820347 CLAMP

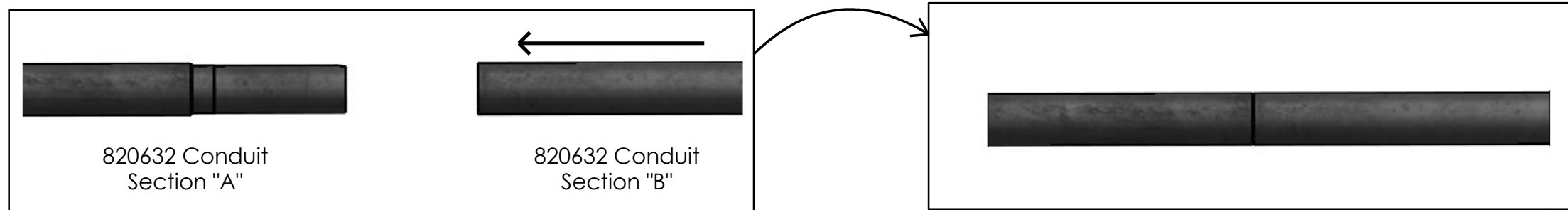
820422  
CONDUIT CONNECTOR



OR VC317

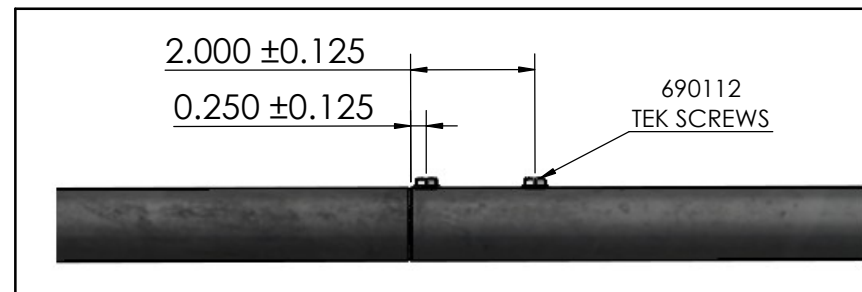


## NEW 820632 CONDUIT INSTALLATION



**NOTES:**

- 820347K CAN STILL BE USED WITH 820632 SWAGED CONDUIT.
- 820347K CLAMP WILL BE INSTALLED AT GREEN WATER PIPE COUPLER LOCATIONS.
- 820347K & GREEN WATER PIPE COUPLER SHOULD BE OFFSET FROM SWAGED CONDUIT JOINT BY 5FT TO IMPROVE LINE RIGIDITY.



**TO INSTALL 820632 SWAGED CONDUIT SECTIONS TOGETHER:**

- 1) SLIDE THE NON-SWAGED SIDE OF CONDUIT "B" ONTO THE SWAGED END OF CONDUIT "A". ENSURE THE ENTIRE SWAGED SECTION (INCLUDING THE SHOULDER) IS INSERTED.
- 2) WITH THE TWO CONDUIT SECTIONS FLUSH TOGETHER, INSTALL (2) 690112 TEK SCREWS INTO THE OVERLAPPING REGION: (1) 690112 MUST BE INSTALLED .25" FROM THE CONDUIT JOINT AND (1) 690112 MUST BE INSTALLED WITHIN 2.25" FROM THE CONDUIT JOINT.