



Quick Sheet Instructions

Installation Instructions for 1.25"/33mm Perch Pipe

Overview:

This Quick sheet will aid in the installation of either a 1.25" or 33mm OD perch pipe with a 1.125" gap above a water line. The components to be used are as follows: (1) Regulator Bracket Assembly (P/N: VR202KL) at the end of each line, (1) Metal Holding Clamp Assembly (P/N 820669) every 10' along the lines, (1) Plastic Intermediate Pipe Support Kit (P/N: 820672) every 2' between metal holding clamps (total of (5) per 10' section), and (1) End assembly kit (P/N: 820670) per line.

NOTES:

Lines must be hung every 8'-10'.

1.25" OD Pipe (P/N: 631865) and coupler kit (P/N: 631811) sold separately.

VR202KL - Regulator Bracket Assembly:

(1) per water line

Assembly Instructions:

1. Insert 8" coupler into end of pipe as shown and secure with appropriate nut and bolt.
2. Slide regulator bracket over end of coupler pipe and secure to regulator with (2) VRP05-1 screws.
3. Insert 631815 plug into end of couper pipe.
3. Secure pipe in bracket with (1) 690112 tek screw.
4. Use 3/16" rope and a thimble (not included) to hang assembly.

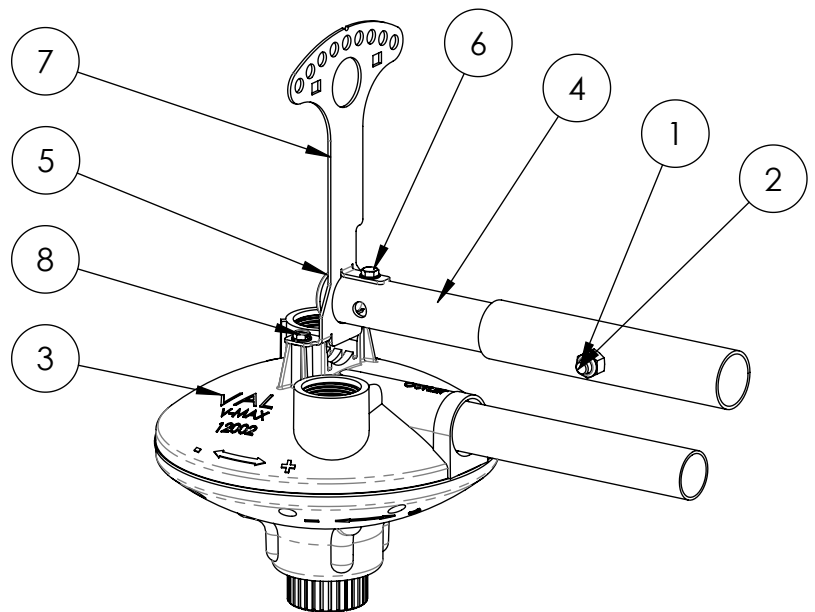


Figure 1: Components Assembled with Regulator

Parts List

Item No.	Part No.	Description	Qty
VR202KL - Regulator Bracket Assembly			
1	010649	5/16-18 X 1-3/4" HEX BOLT	1
2	012789	5/16-18 NYLOCK NUT	1
3	12002-PH	V-MAX REGULATOR FOR VR-202	1
4	631810	1.05" OD, 8" LONG COUPLER PIPE	1
5	631815	PLUG, 1.05" OD PIPE	1
6	690112	10 X 1/2 TEK SCREW	1
7	820659	REGULATOR BRACKET	1
8	VRP05-1	REGULATOR BRACKET SCREW	2

Installation Instructions (continued):

820672 - Plastic Intermediate Pipe Support Assembly:

(5) per 10' water pipe. Max 2' spacing between 820672 assemblies. Must have (1) assembly 6"-8" from o-ring side of water pipe coupler.

Assembly Instructions:

- 1. Snap bracket halves together with bottom rivet, then fit one half over pipes as shown in figure 2 to the right.
- 2. Fit other bracket half over pipes and snap in second rivet as shown in figure 3 to the right. Be sure to place rivet in correct hole, see below.

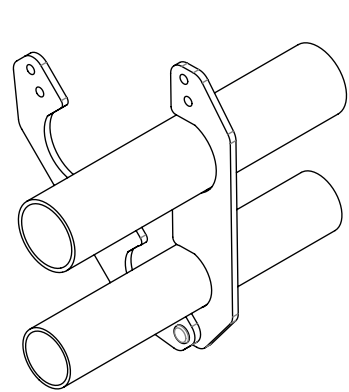


Figure 2: Top open

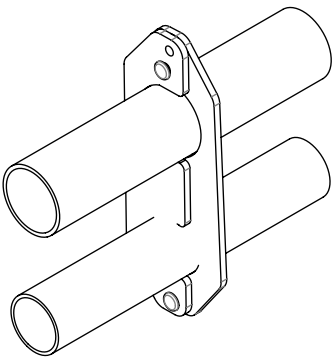


Figure 3: Top closed

NOTE: For 1.25" OD perch pipe, place top rivet in bottom hole of bracket, see figure 4. For 33 mm OD perch pipe, place rivet in top hole of bracket, see figure 5.

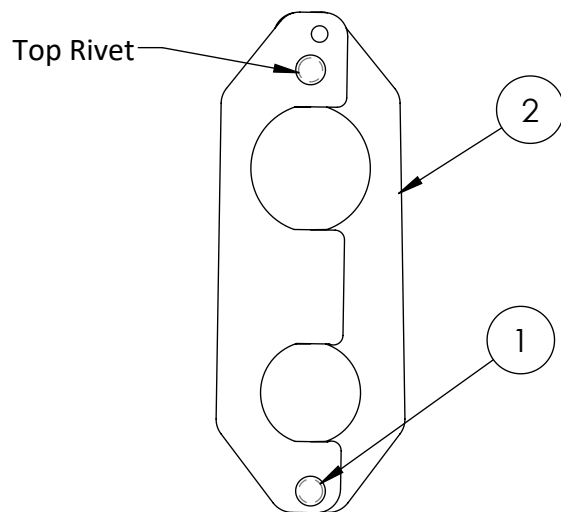


Figure 4: Installation with 1.25" pipe

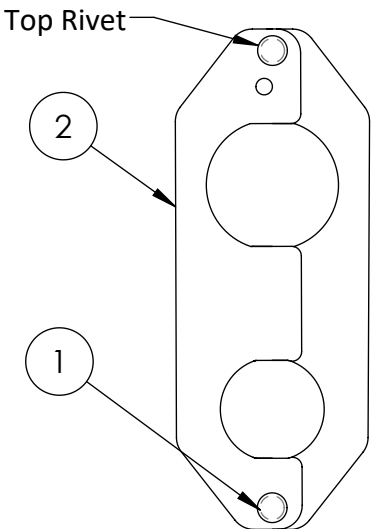


Figure 5: Installation with 33 mm pipe

Parts List

Item No.	Part No.	Description	Qty
820672 - Plastic Intermediate Pipe Support Assembly			
1	640404	Intermediate Pipe Support Rivet	2
2	820655	Plastic Pipe Support Bracket	2

NOTE: 1.25" OD Pipe (P/N: 631865) and Coupler kit (P/N: 631811) sold separately.

North America:

Phone: 800.99VALCO (800.998.2526)
Fax: 419.678.2200
Email: sales@val-co.com

International:

Phone: (+1) 419.678.8731
Fax: (+1) 419.678.2200
Email: intl.sales@val-co.com

820669 - Metal Holding Clamp

Assembly:

Every 10', on top of each water line coupler

Assembly Instructions:

- 1 Align metal clamps centered over the water line coupler as shown in figure 6 to the right.
2. Insert and tighten 690425 carriage bolt through middle.
3. Insert (2) 690112 tek screws into metal pipe

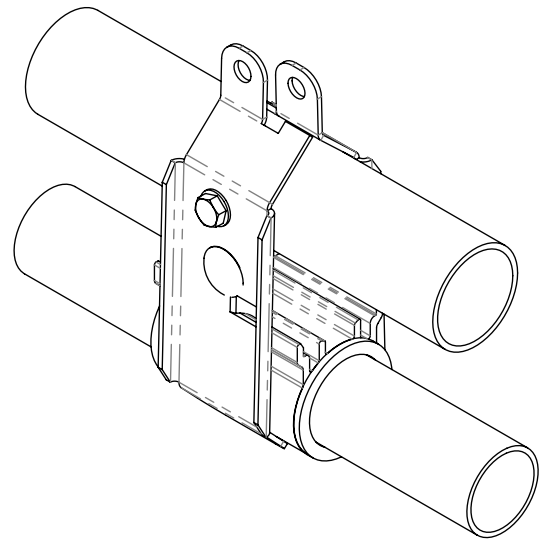


Figure 6: Isometric View of Assembly

Parts List

Item No.	Part No.	Description	Qty
820669 - Metal Holding Clamp Assembly			
1	690112	10 x 1/2 TEK SCREW	2
2	690236	1/4-20 HEX NUT, SER FLG	1
3	690425	1/4-20 X 1-3/4" CRG BOLT	1
4	820660	HOLDING CLAMP HALF	2

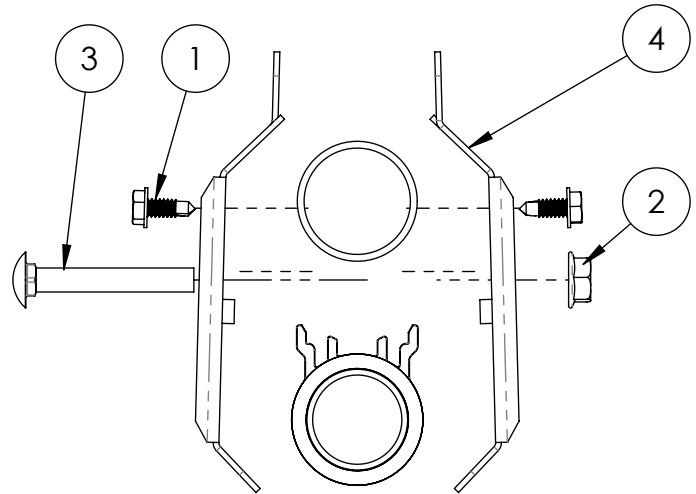


Figure 7: Exploded View of Components

North America:

Phone: 800.99VALCO (800.998.2526)
Fax: 419.678.2200
Email: sales@val-co.com

990366 [B] 4/15/2025
Page 3

International:

Phone: (+1) 419.678.8731
Fax: (+1) 419.678.2200
Email: intl.sales@val-co.com

820670 - End Assembly:

(1) Per water line

Assembly Instructions:

1. Insert 820641 onto end of water pipe.
2. Align 820660 - metal clamps centered over the water line coupler.
3. Slide 820661 - end assembly bracket over top of metal clamp halves, aligning holes
4. Insert and tighten 690425 carriage bolt through middle.
5. Insert (2) 690112 tek screws through holes in bracket into metal pipe
6. Use 3/16" rope and a thimble (not included) to hang assembly
7. Insert 630812 plug into the end of the pipe.
8. (Optional) Use PMTT6 Zip tie to secure hose through rectangular holes in bracket.

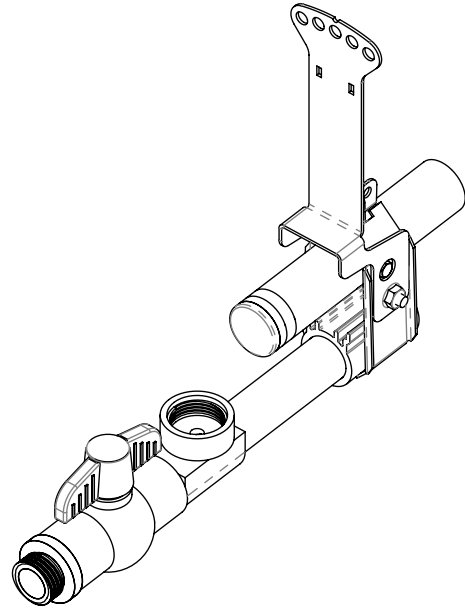


Figure 8 - Isometric View of Assembly

Item No.	Part No.	Description	Qty
820670 - End Assembly			
1	631812	PLUG, 1.25" OD PIPE	1
2	690002	1/4-20 X 2" CRG BOLT	1
3	690112	10 X 1/2 TEK SCREW	2
4	690236	1/4-20 HEX NUT, SER FLG	1
5	820641-PH	END ASSY STANDPIPE ADAPTOR	1
6	820660	HOLDING CLAMP HALF	2
7	820661	ANTI-TILT BRACKET	1
8	PMTT6	WIRE TIE, 7.5"	1
9	VE326	GARDEN HOSE ADAPTER	1
10	VV801	3/4" BALL VALVE, SCH 80	1

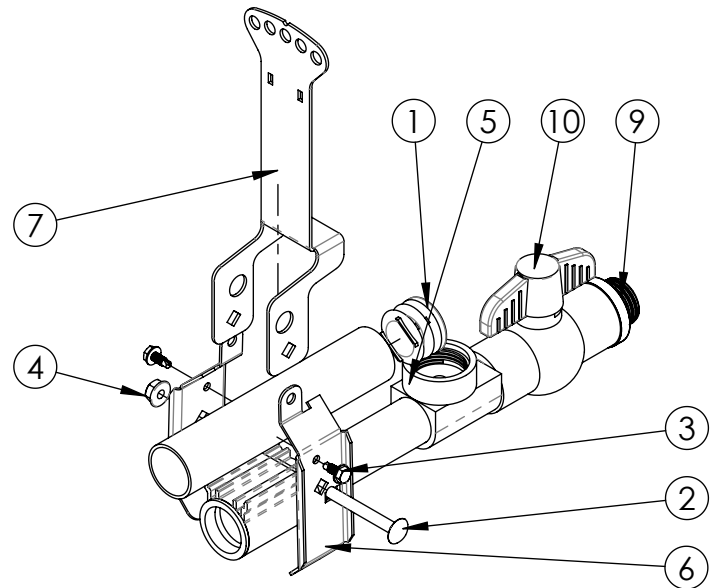


Figure 9 - Exploded View of Components

North America:

Phone: 800.99VALCO (800.998.2526)
Fax: 419.678.2200
Email: sales@val-co.com

990366 [B] 4/15/2025
Page 4

International:

Phone: (+1) 419.678.8731
Fax: (+1) 419.678.2200
Email: intl.sales@val-co.com