



Quick Sheet Instructions

Two-Wire Anti-Roost System

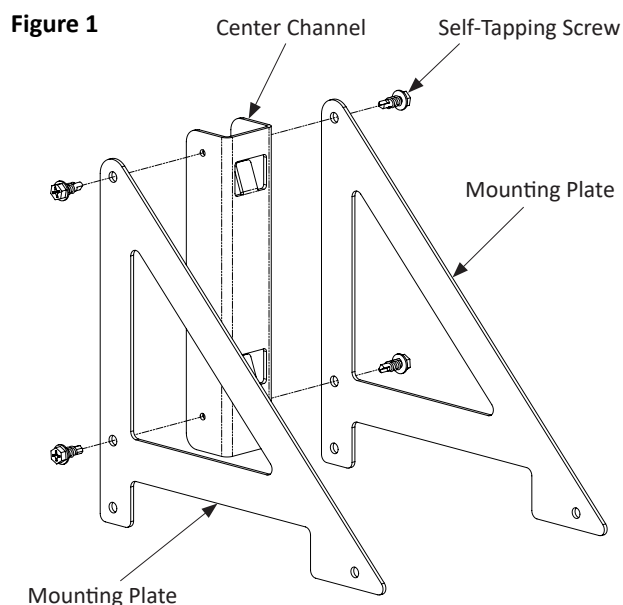
820518, 820521

Introduction

The two wire anti-roost system is a humane way of keeping birds from perching on a conduit water line without the use of electricity.

End Bracket Assembly

1. Prepare a mounting plate (820514), two self-tapping screws (VA319), and a center channel (820517).
2. Place the mounting plate on top of the center channel, lining up the pre-drilled holes.
3. Screw both screws into the pre-drilled holes, connecting the mounting plate and center channel together, as shown in Figure 1.
4. Repeat for the other side to complete the end bracket assembly.

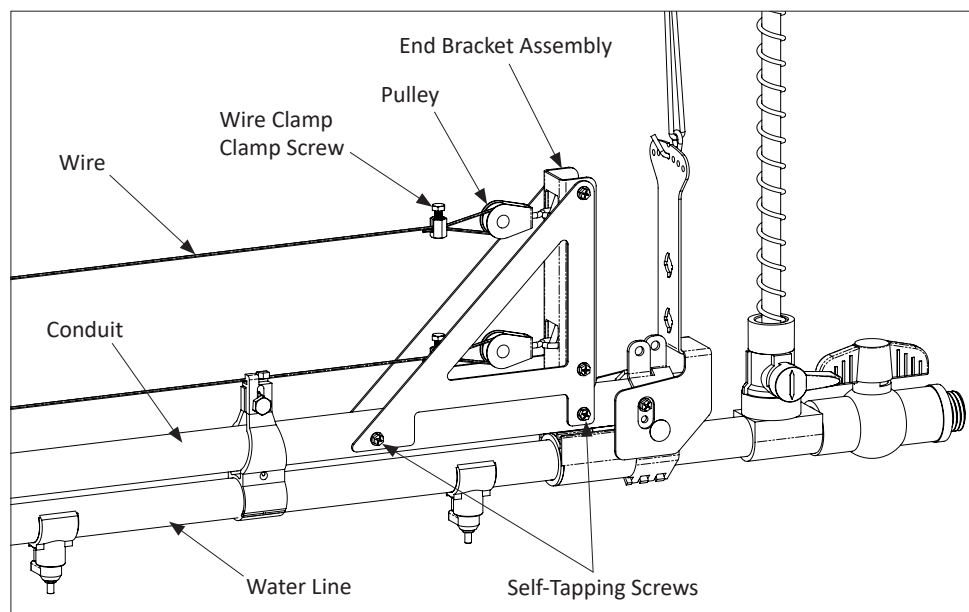


Anti-Roost Wire Installation

To hold the wires at the end of row, refer to Figure 2:

- Install (4) self-tapping screws (VA319) to attach the assembled end bracket to the conduit.
- The insulated pulley (VEN91104) attaches to a slotted tab in the center channel (820517) of the assembled end bracket. (This is repeated for both anti-roost wires).
- Each anti-roost wire is secured to the pulley with an anti-roost wire clamp (VW1) and a clamp screw (VW2).

Figure 2

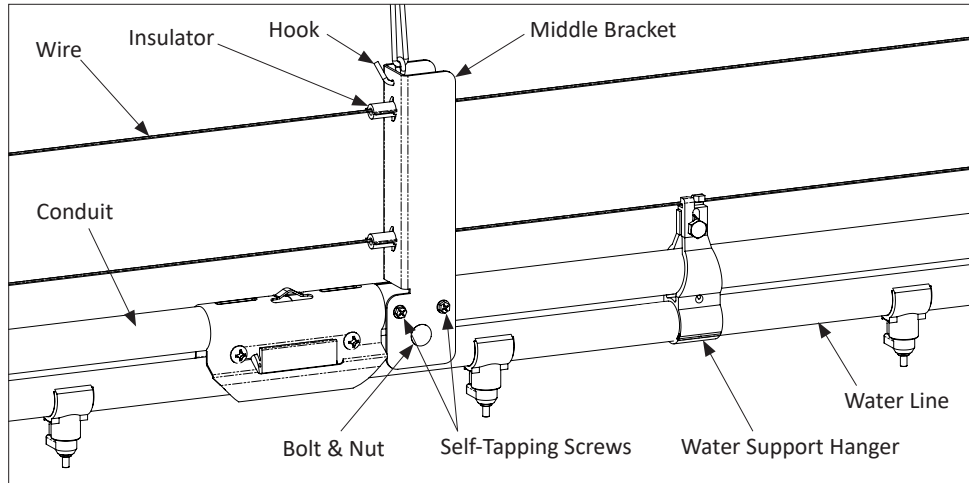


Anti-Roost Wire Installation - continued

A middle bracket assembly (820521) for anti-roost wires is installed every 5' (1.5m) on the length of the water lines. Refer to Figure 3.

- Attach a middle bracket (820519) to the conduit with (4) self-tapping screws (VA319).
- A carriage bolt (690425) and nut (690236) is inserted between the conduit and water line, supporting the conduit for winching purposes. A hook (820522) is provided to attach the middle bracket assembly to a winching line.
- (2) wires run through each bracket via (2) insulators (820286). Twist insulators into place in middle bracket.

Figure 3



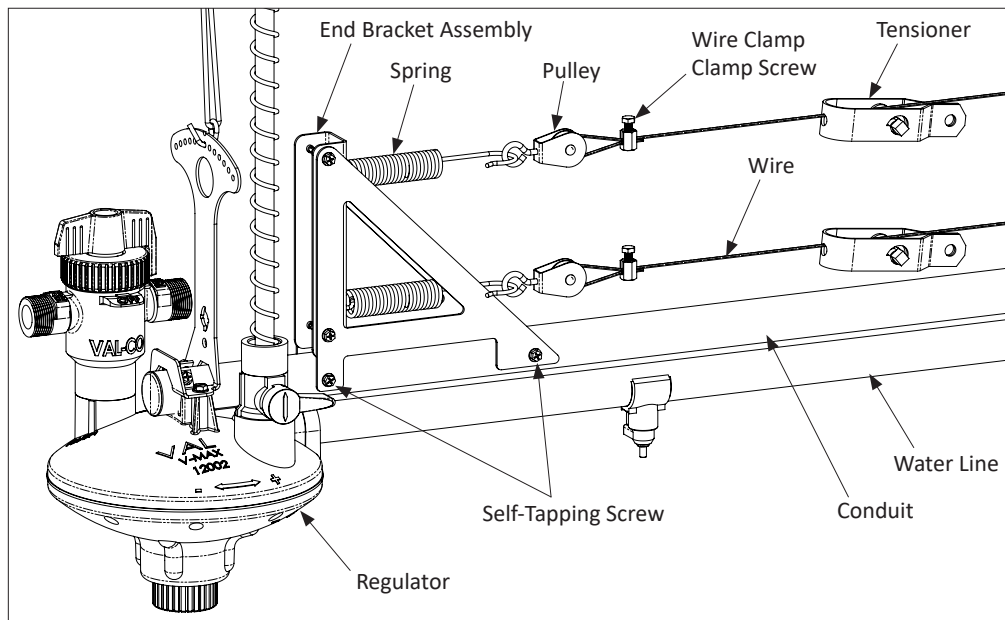
NOTE: It is important to install water support hangers every 2' (0.61m). Bottom anti-roost wire should be attached to the water support hangers.

The end bracket for double anti-roost wires located at the regulator end is similar to the end bracket at the end of row assembly. The primary difference is the addition of a spring and a tensioner.

To hold the wires at the regulator end, refer to Figure 4:

- A spring (450437) with open and closed sides attaches to a slotted tab in the center channel (820517) of the assembled end bracket, holding the insulated pulley (VEN91104). (This is repeated for both anti-roost wires).
- Each wire is secured with an anti-roost wire clamp (VW1) and a clamp screw (VW2).
- A tensioner (820658) is installed at the regulator end to tension the anti-roost wire. Thread the wire through the hole in the frame of the tensioner and through the hole in the center shaft, so that the wire tension can be adjusted by turning the shaft.

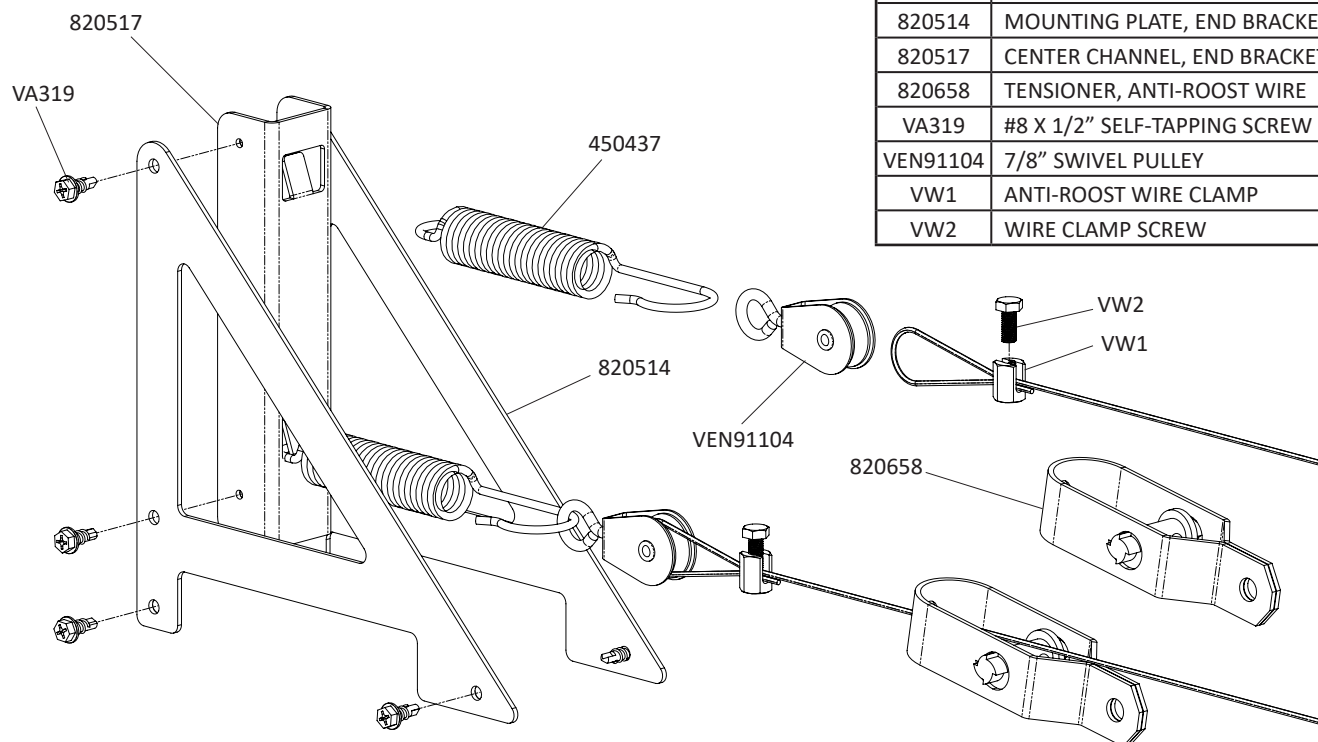
Figure 4



NOTE: When using with a mid-line regulator, split anti-roost system in half and use (2) 820518 per line.

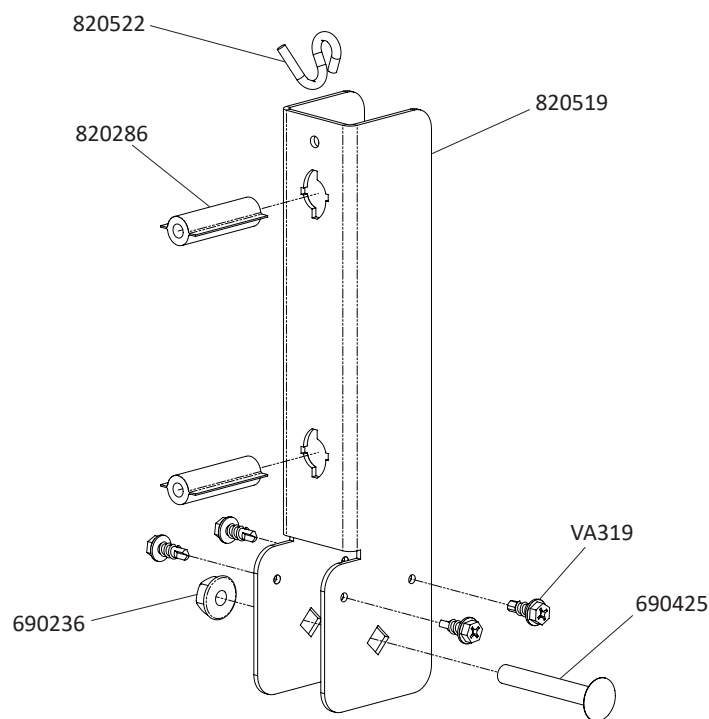
End Bracket Assembly (820518) - Parts List

PART #	DESCRIPTION	QTY
END BRACKET ASSEMBLY (820518)		
450437	SPRING FOR ANTI-ROOST WIRE	2
820514	MOUNTING PLATE, END BRACKET	4
820517	CENTER CHANNEL, END BRACKET	2
820658	TENSIONER, ANTI-ROOST WIRE	2
VA319	#8 X 1/2" SELF-TAPPING SCREW	16
VEN91104	7/8" SWIVEL PULLEY	4
VW1	ANTI-ROOST WIRE CLAMP	4
VW2	WIRE CLAMP SCREW	4



Middle Bracket Assembly (820521) - Parts List

PART #	DESCRIPTION	QTY
MIDDLE BRACKET ASSEMBLY (820521)		
690236	1/4-20 SERRATED FLANGED HEX NUT	1
690425	1/4-20 X 1-3/4" CARRIAGE BOLT	1
820286	INSULATOR	2
820519	MIDDLE BRACKET	1
820522	HOOK, OPEN X CLOSED	1
VA319	#8 X 1/2" SELF-TAPPING SCREW	4



North America:

Phone: 800.99VALCO; 800.998.2526

Fax: 419.678.2200

Email: sales@val-co.com

990354

REV [-]

International:

Phone: (+1) 419.678.8731

Fax: (+1) 419.678.2200

Email: intl.sales@val-co.com