



Quick Sheet Instructions

Turkey Bell Drinker VTB105, VTB100

Assembly Instructions

The Val-Co® VTB105 and VTB100 are shipped as sub-assemblies and will require some assembly. Refer to Parts List drawings for views of each assembly and available replacement parts.

1. Assemble the valve assembly to the turkey bell bowl assembly. Screw the threads of the bowl adapter into the threads of the collar 1-3 turns to hold the bowl securely, as shown in Figure 1.



Be sure adjuster nut is on the bowl adapter and screwed into the top of the bowl adapter by at least (1) thread, but not more than (3) threads.

2. Assemble the mini-drinker adapter (VM101), tubing (BG222), and water supply saddle, as shown in Figures 2, 3, and 4.
3. Hang in place using the clip (VTB170), rope (VD319), and height adjustment strap (VS341), as shown in Figure 5. Clip and height adjustment shown in Figures 6 and 7.
4. Turn the water to the drinker on.



There should be little to no water coming from the trigger valve.

Water Flow Adjustment

5. Gently spin the bowl up while holding the adjusting nut until water starts running from the valve.
 - a. If the water stops running too quickly (water level below 1/2"), screw the bowl up slightly (less than 1/2 turn).
 - b. If the water does not stop running soon enough (water level above 1-1/4"), screw the bowl down slightly (less than 1/2 turn).
6. Once the desired water level is achieved, carefully tighten the green lock nut without changing the relationship between the bowl adapter and the adjusting nut.
7. Future adjustments, should they be needed, are accomplished in a similar manner as Step 5. If a slight adjustment is needed, Steps 5a or 5b should provide the desired results, while a larger adjustment would warrant starting at the beginning of Step 5.

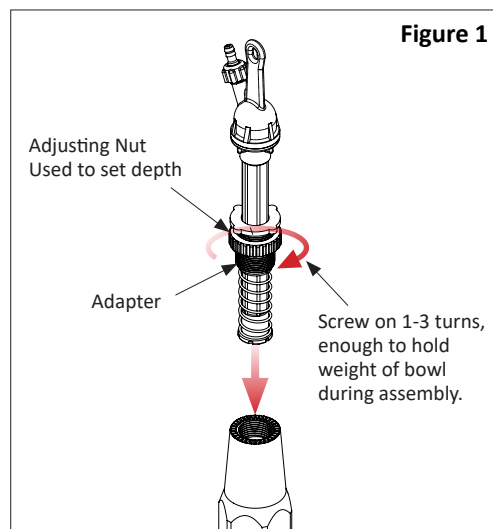
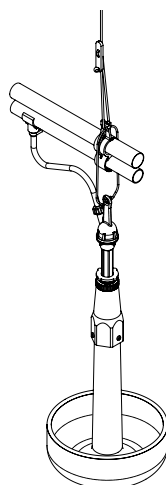


Figure 2

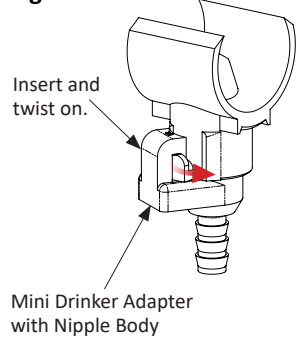


Figure 3

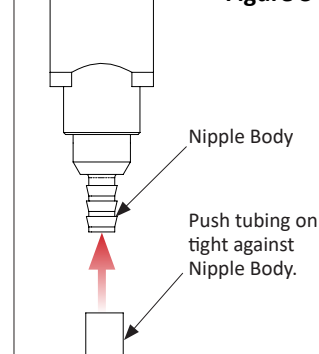


Figure 4

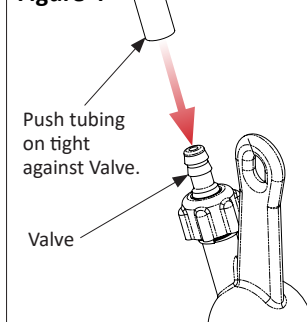


Figure 5

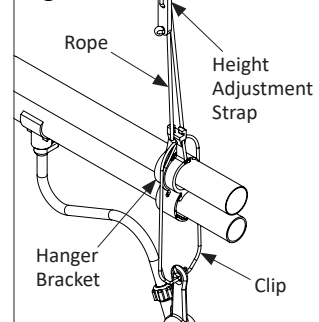


Figure 6

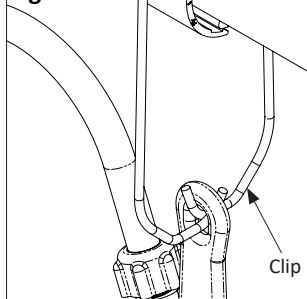
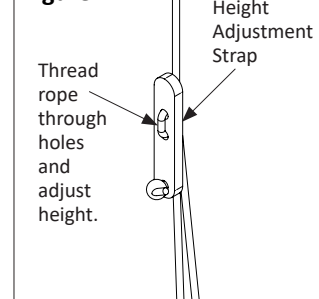
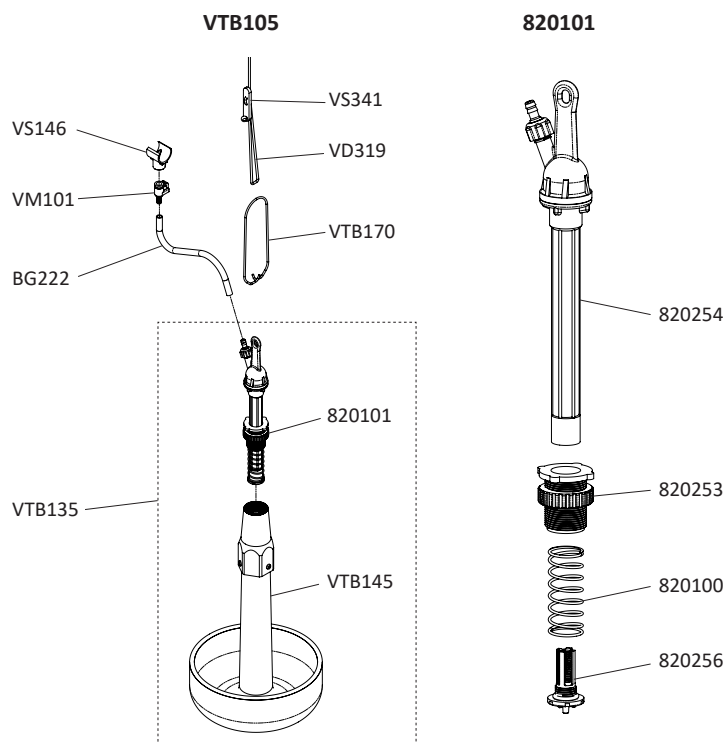


Figure 7

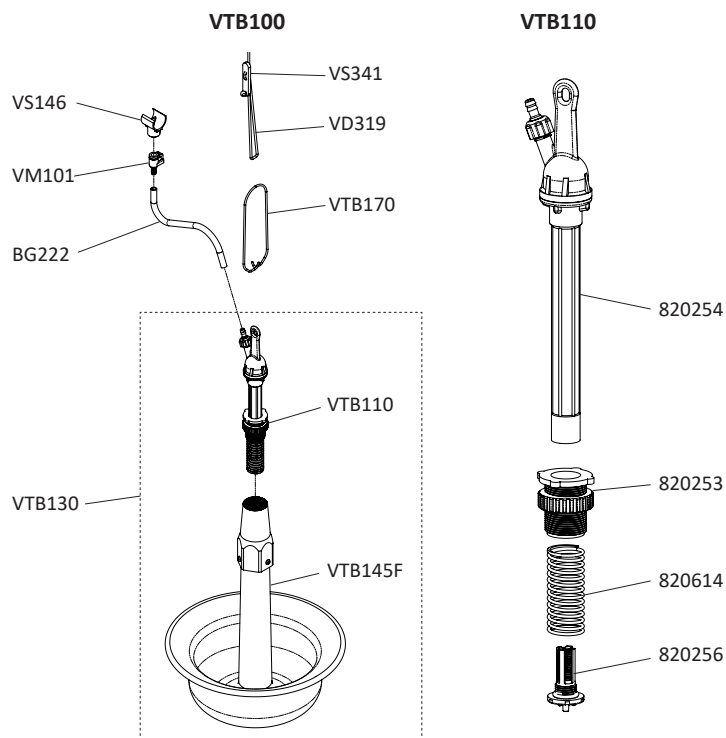


VTB105 Turkey Bell Drinker - Parts List



PART #	DESCRIPTION	QTY
VTB105 - TURKEY BELL DRINKER		
BG222	1/4" GREEN PVC TUBING	1.5
VD319	1/8" POLYESTER CORD	2
VM101	MINI DRINKER ADAPTER WITH NIPPLE BODY	1
VS341	HEIGHT ADJUSTMENT STRAP	1
VTB135	TURKEY BELL DRINKER, BOWL AND VALVE ASSEMBLY	1
VTB170	TURKEY BELL CLIP	1
VTB135 - TURKEY BELL DRINKER, BOWL AND VALVE ASSEMBLY		
VTB145	TURKEY BELL DRINKER BOWL ASSEMBLY	1
820101	TURKEY BELL DRINKER VALVE ASSEMBLY	1
820101 - TURKEY BELL DRINKER VALVE ASSEMBLY		
820100	SPRING, SS, 1.017" OD, 2.464" LG, .072 DIA	1
820253	ADJUSTABLE NUT ASSEMBLY	1
820254	STEM ASSEMBLY	1
820256	TRIGGER PIN ASSEMBLY	1
ACCESSORY		
VS146	STANDARD SADDLE	1

VTB100 Turkey Bell Drinker, Flange - Parts List



PART #	DESCRIPTION	QTY
VTB100 - TURKEY BELL DRINKER, FLANGE		
BG222	1/4" GREEN PVC TUBING	1.5
VD319	1/8" POLYESTER CORD	2
VM101	MINI DRINKER ADAPTER WITH NIPPLE BODY	1
VS341	HEIGHT ADJUSTMENT STRAP	1
VTB130	TURKEY BELL DRINKER, FLANGE, BOWL AND VALVE ASSEMBLY	1
VTB170	TURKEY BELL CLIP	1
VTB130 - TURKEY BELL DRINKER, FLANGE, BOWL AND VALVE ASSEMBLY		
VTB145F	TURKEY BELL DRINKER BOWL ASSEMBLY, FLANGE	1
VTB110	TURKEY BELL DRINKER VALVE ASSEMBLY, FLANGE	1
VTB110 - TURKEY BELL DRINKER, FLANGE, VALVE ASSEMBLY		
820614	SPRING, SS, 1.075" OD, 2.466" LG, .089 DIA	1
820253	ADJUSTABLE NUT ASSEMBLY	1
820254	STEM ASSEMBLY	1
820256	TRIGGER PIN ASSEMBLY	1
ACCESSORY		
VS146	STANDARD SADDLE	1

North America:

Phone: 800.99VALCO; 800.998.2526

Fax: 419.678.2200

Email: sales@val-co.com

990014

REV [B]

International:

Phone: (+1) 419.678.8731

Fax: (+1) 419.678.2200

Email: intl.sales@val-co.com