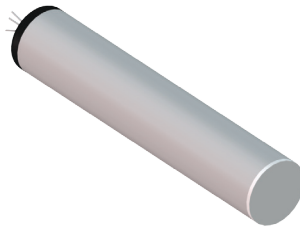




Quick Sheet Instructions

Humidity Sensor

PA-56



Installation

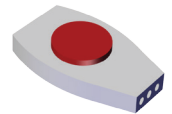


Suspend sensors from the ceiling to ensure free airflow. Sensors should hang close to the animals, but should be OUT OF THEIR REACH. For best results, keep the sensors out of sunlight, away from moving machinery, heaters, power wiring, sprinklers and lights. The sensor comes attached to a short length of cable. You should splice this cable with the existing shielded wire that runs to your controller.

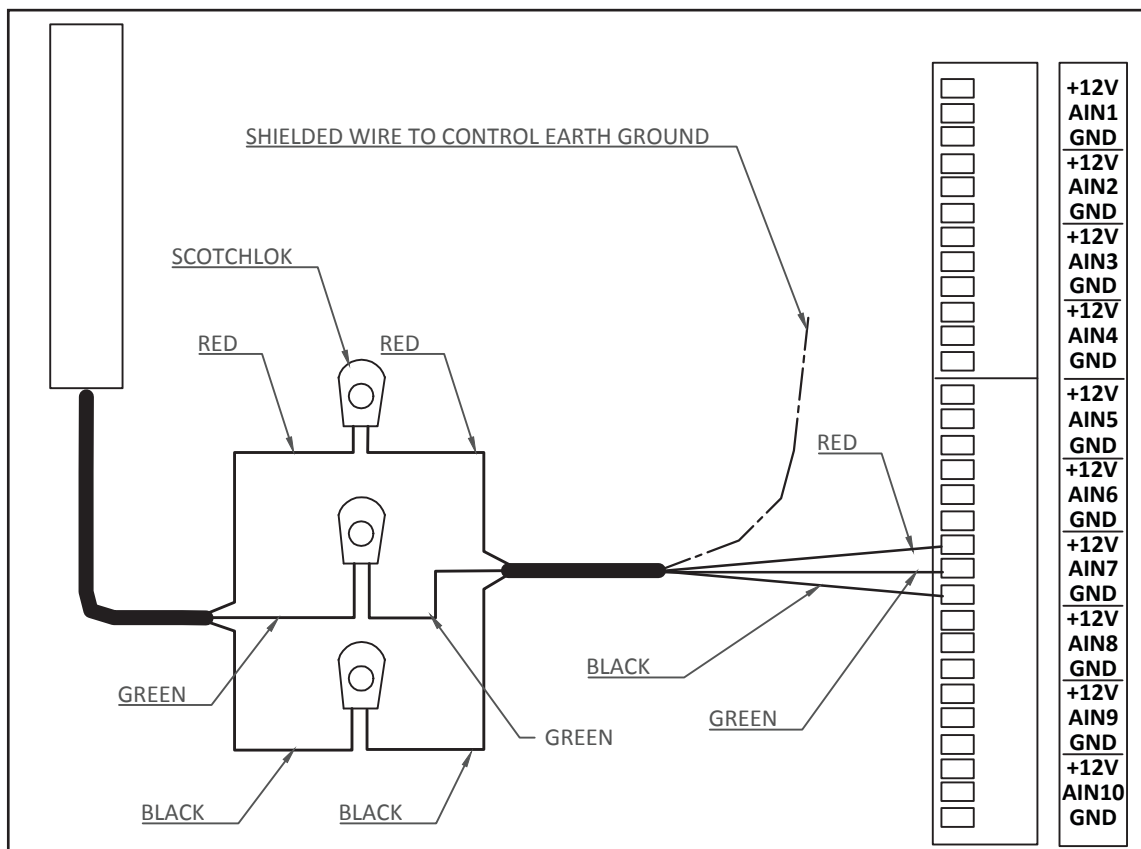
1. Strip the outer jacket of the shielded wire to expose 1-1/2" (3.81 cm) of lead wires. **DO NOT** strip insulation from the lead wires. (*Wire insulation must not be stripped when using Scotchlok® connectors.*)



Scotchlok® connectors are designed for 22 to 24 gauge wire. If 18 or 20 gauge wire is used for the sensor cable running to the controller, attach the sensor with wire nuts and wrap connections with electrical tape.



2. Your controller has input terminals labeled AIN, +12, GND. Pair cables/shielded wires as shown in the wiring diagram below.
3. Place the paired wires into the Scotchlok® connector. Be sure wires are fully inserted. Depress the red button evenly with pliers until the button is flush with the outer ring.



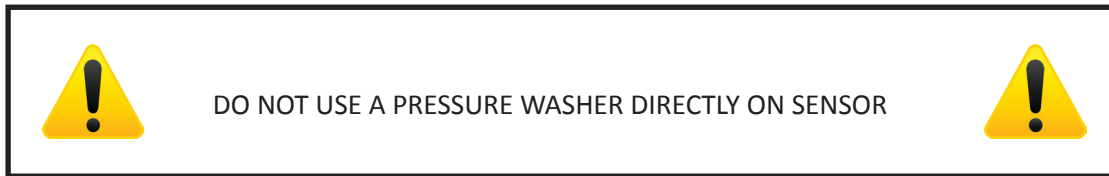
Setting Calibration Values

Each humidity sensor has unique calibration values. These values are printed on the label affixed to the sensor. Enter the calibration values in the controller's SENSOR CALIBRATION AND SETTING menu item. If you are using a 4-channel such as the POLAIR, divide the calibration values by 16 (thus, 10485 becomes 655).

Refer to the controller's Operation Manual for information about humidity sensor calibration.

Maintenance

Cover the sensor ends when washing out the building. Use alcohol to wipe clean as needed.



Scotchlok is a registered trademark of Minnesota Mining and Manufacturing Company (3M).

North America:

Phone: 800.99VALCO

(800.998.2526)

Fax: 419.678.2200

Email: sales@val-co.com

U:\MANUALS\990000\990148

JDS 1-25-2016

Val-Co® warranty applies to this product

©2016 Valco Companies, Inc.

International:

Phone: (+1) 419.678.8731

Fax: (+1) 419.678.2200

Email: intl.sales@val-co.com