

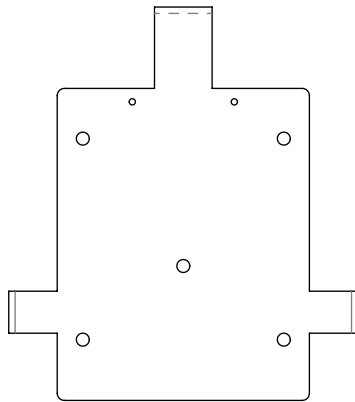


Quick Sheet Instructions

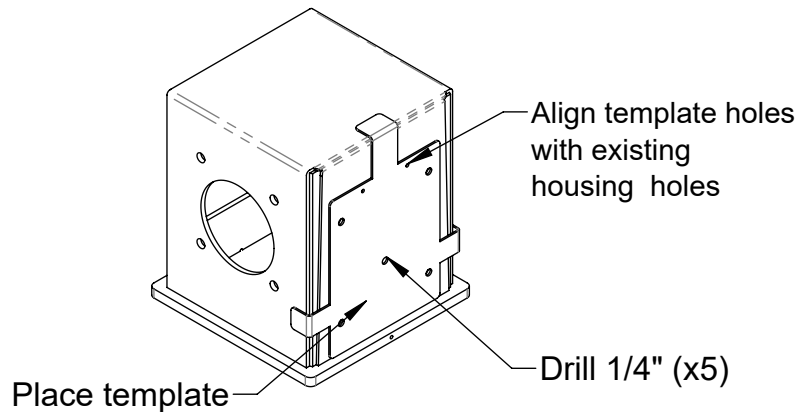
731040 AP DH VALCO CONTROL BOX ADAPTER KIT

ADAPTER KIT INSTALLATION INSTRUCTIONS:

1. Lockout - tagout, disconnect power before servicing discharge head.
2. Remove original control box and clean surface.
3. Place the provided template (View A) on the housing to determine the hole location ensuring that the two upper existing holes on the housing align with the template (View B);
4. Use a 1/4" drill bit to drill all the marked holes on the template;

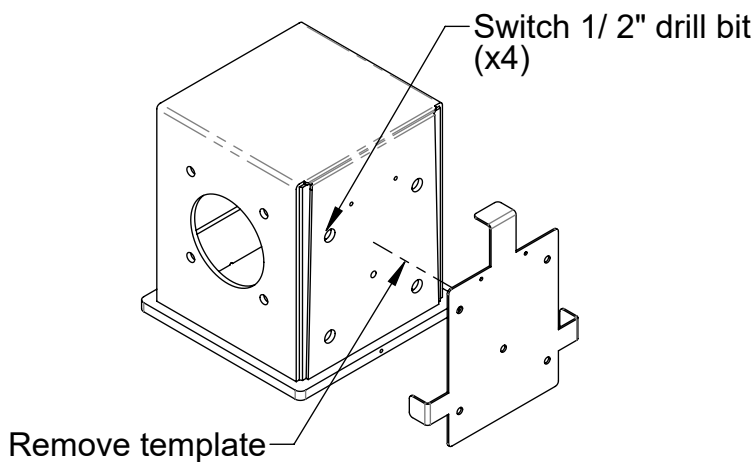


VIEW A

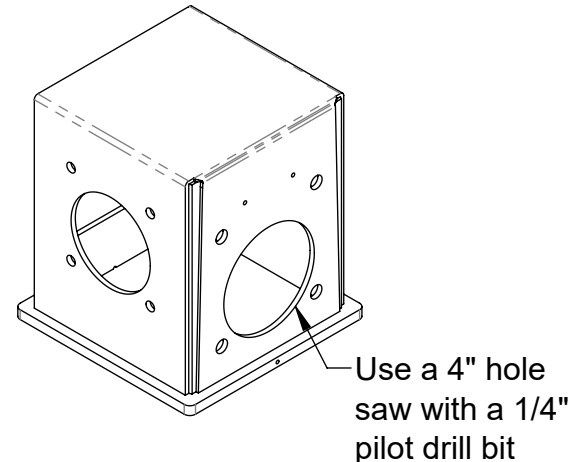


VIEW B

5. Remove the template and switch to a 1/2" drill bit to enlarge the four holes surrounding the middle hole (View C); Use a 4" hole saw with a 1/4" pilot drill bit to create the middle hole (view D);
6. Ensure that the housing matches the appearance shown in View D;



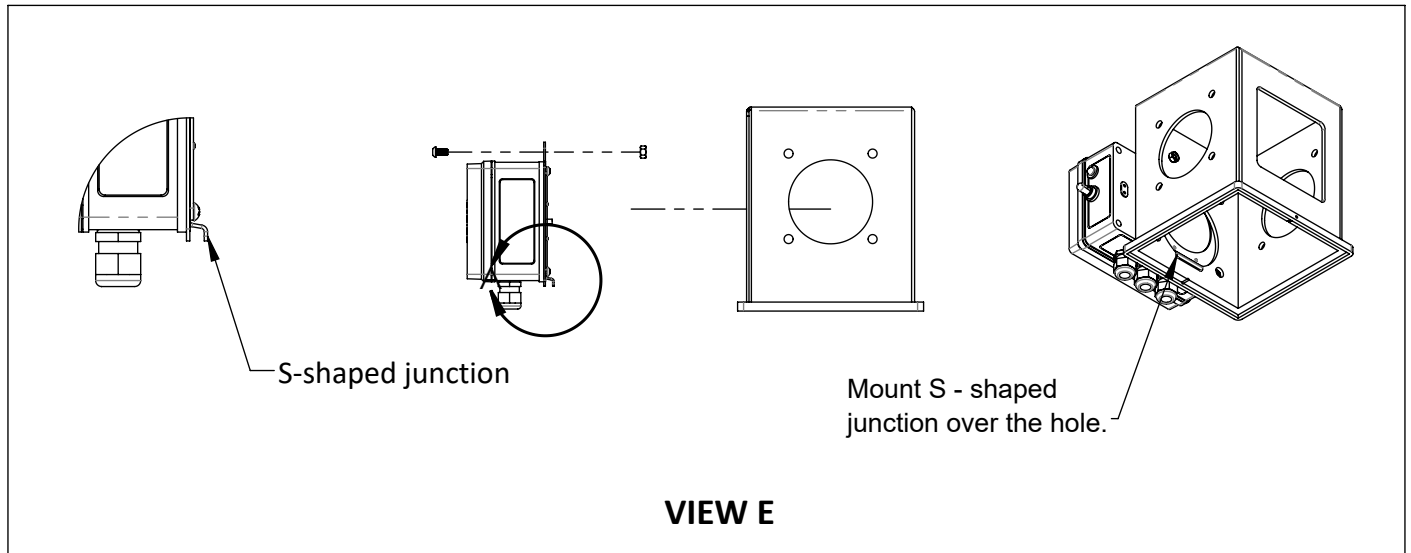
VIEW C



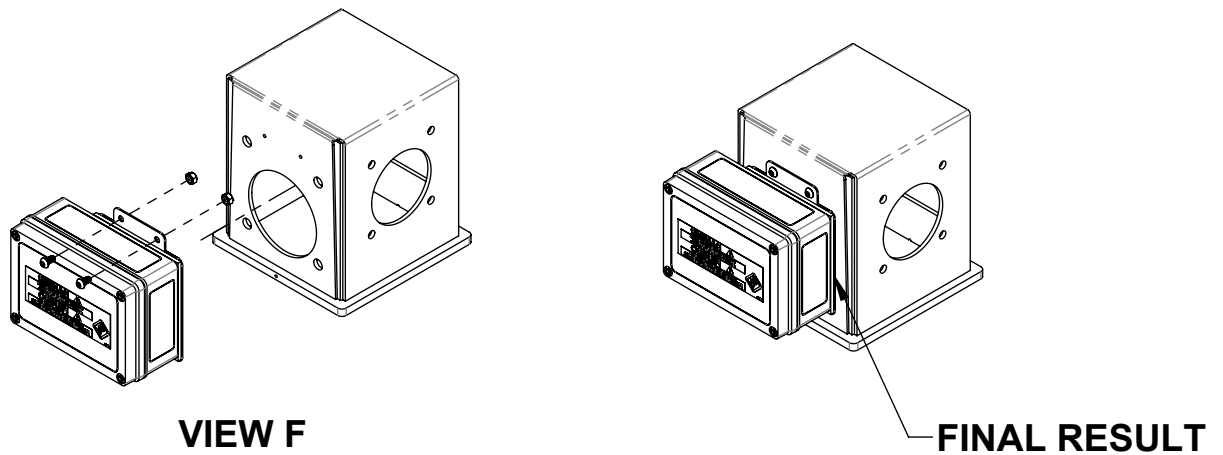
VIEW D

OVER 

7. Install the control box on the housing by positioning the S- shaped junction of the mounting plate over the bottom part of the hole on the housing as shown in View E;



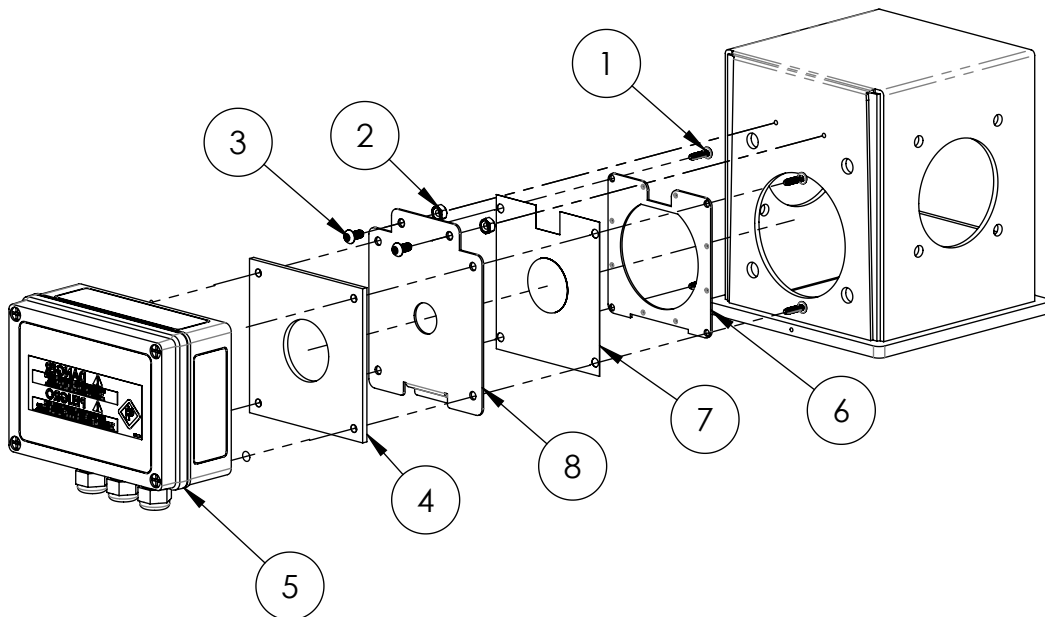
8. Secure the control box to the housing by using the two screws and nuts provided in the bag (View F - Final Result).



Repair Parts List

ITEM #	PART #	DESCRIPTION	QTY
731040 AP DH VALCO CONTROL BOX, ADAPTER KIT			
1	011382	BOLT, PAN, #10-24 X 3/4"	4
2	690108	NUT, 1/4-20 HEX, SS	2
3	690256	SCREW, 1/4-20 X 1/2 BHHS, ZP	2
4	730046	GASKET, DISCHARGE HEAD	1
5	730501	CONTROL BOX, DH, W/RELAY	1
6	730573	DIAPHRAGM RETAINER	1
7	730765	CONTACT ASSEMBLY	1
8	731041	AP DH MOUNTING PLATE	1
9	731044	AP MOUNTING PLATE TEMPLATE	1

Note: 731044 is not shown in exploded view



North America:

Phone: 800.99VALCO (800.998.2526)
 Fax: 419.678.2200
 Email: sales@val-co.com

990347 [-] 8/22/2024
 Page 3

International:

Phone: (+1) 419.678.8731
 Fax: (+1) 419.678.2200
 Email: intl.sales@val-co.com