



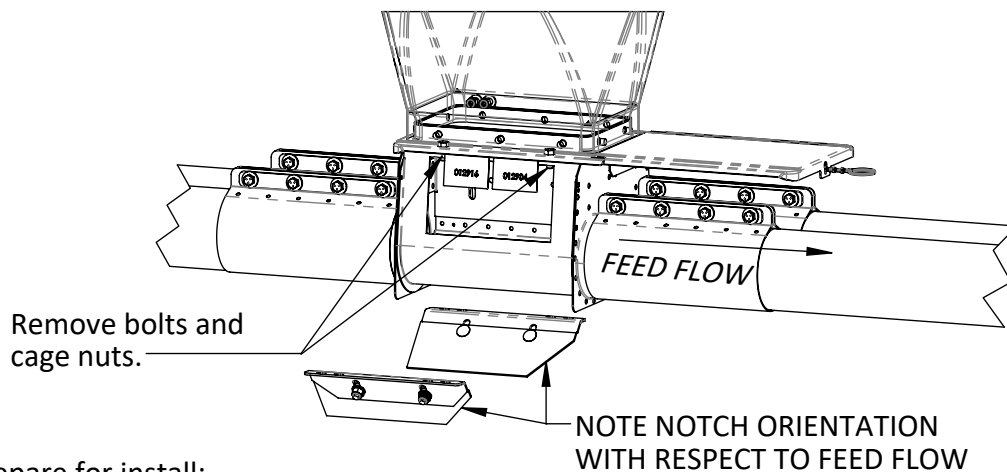
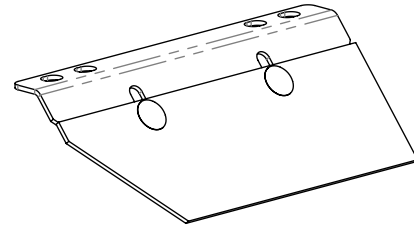
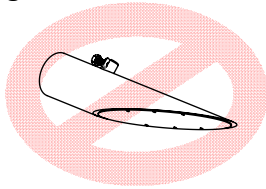
Quick Sheet Instructions

740 TWIN BOOT PLATE RESTRICTOR

740552

Overview:

This instruction is for the 740 twin boot plate restrictor. Before beginning install, ensure that both 740959 floating restrictors have been removed.

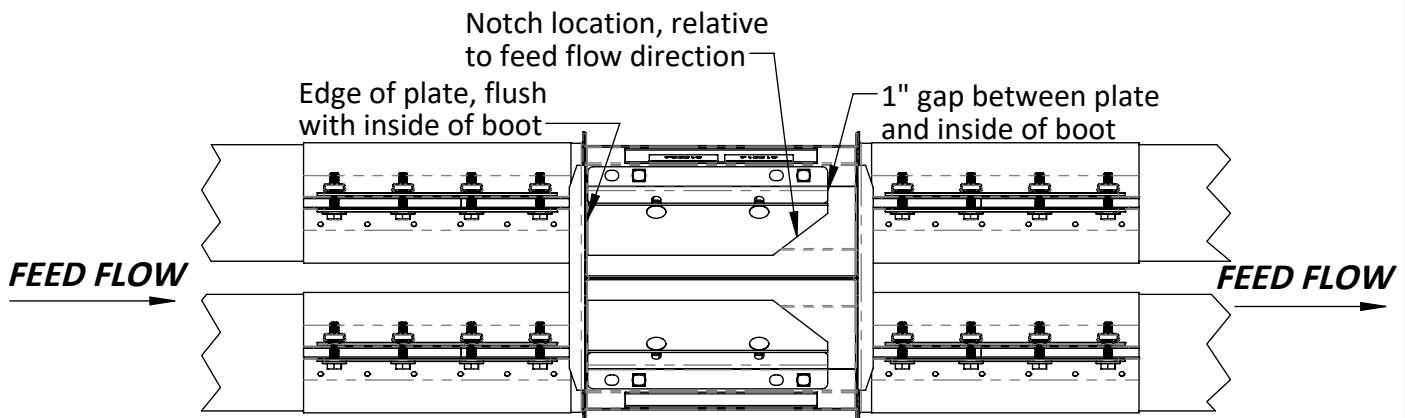


Step 1, Prepare for install:

- Follow lock-out tag-out procedure to disconnect power from feed system.
- Ensure slide valve is completely closed.
- Remove both access doors from the boot.
- Ensure both restrictors are set up in the proper orientation as shown above.
- Remove all 4 bolts and cage nuts attaching slide valve to lower boot.

Step 2:

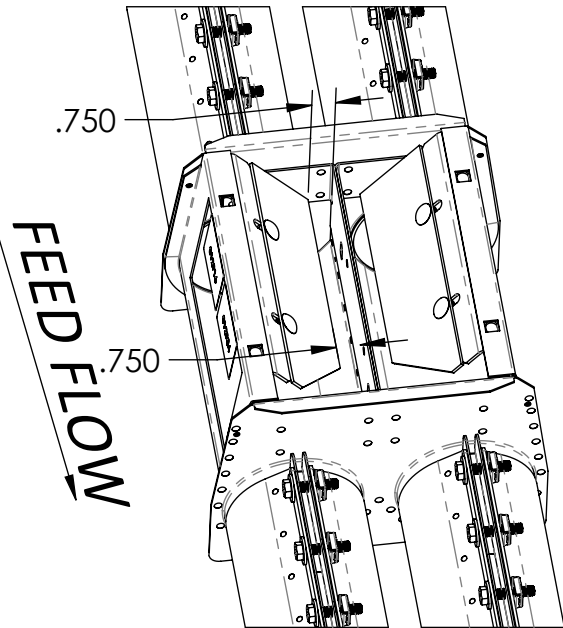
- Insert baffle assembly into the boot in the orientation as shown.
- Use the provided lock nuts to replace the existing cage nuts.



Installation Instructions (continued):

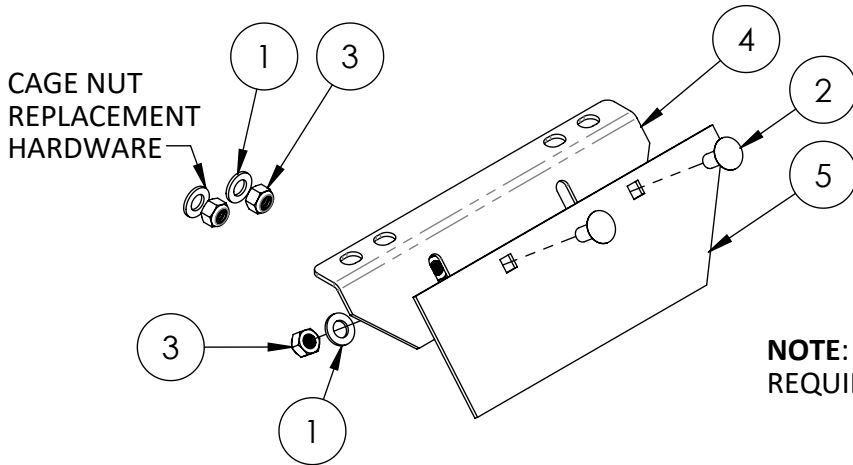
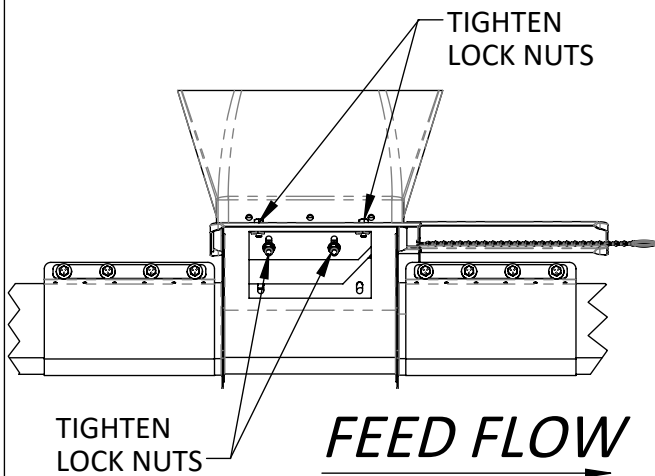
Step 3:

- Ensure that the edge of the baffle is 3/4" away from the center divider, as shown.
- Once the distance is set correctly, tighten the slot hardware.



Step 4:

- Double check that all hardware is fully tightened
- Double check that orientation of both baffles is correct in relation to the feed flow
- Reinstall both access doors.



NOTE: TWO 740552 RESTRICTORS REQUIRED PER TWIN BOOT.

740552 - BILL OF MATERIALS			
ITEM #	PART #	QTY	DESCRIPTION
1	010426	4	WASHER, FLAT, 5/16"
2	011453	2	BOLT, CRG, 5/16-18 X 3/4"
3	012789	4	5/16-18 NYLOCK NUT
4	740549	1	RIGID PLATE, 740 TWIN BOOT
5	740550	1	SLIDING PLATE, 740 TWIN BOOT

North America:

Phone: 800.99VALCO (800.998.2526)
Fax: 419.678.2200
Email: sales@val-co.com

International:

Phone: (+1) 419.678.8731
Fax: (+1) 419.678.2200
Email: intl.sales@val-co.com