



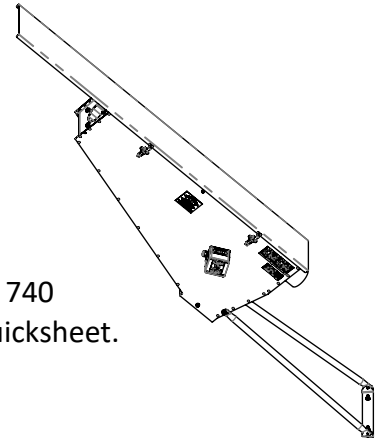
Quick Sheet Instructions

501530 FEED SCREENER ASSEMBLY 740

Overview:

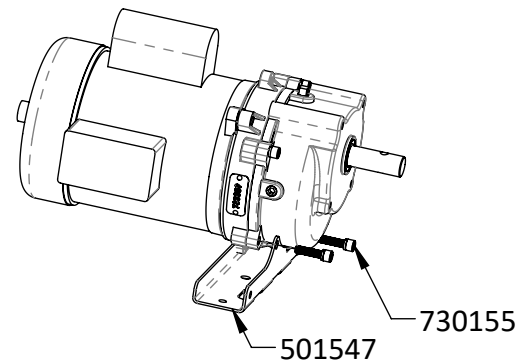
The feed screener is designed to remove foreign objects from poultry feed. This includes hardware, tools, whole corn, and other similar objects. See 740 flexible auger manual for more information.

Operating recommendations: The feed screener is designed to be used with a 740 flexible auger system. This system needs to be supported as described in the Quicksheet. This system is designed to operate at an angle between 30 and 45°.

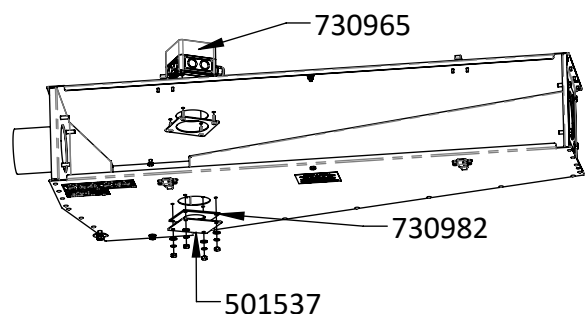


Installation Instructions:

Step 1: Mount the motor support (501548) to the gearbox. Orient the gearbox so that the drain plug is facing down. Then, back out the bottom two bolts (730155) and mount the support as shown in the figure with those same bolts. Then assemble the motor, gearbox, and discharge head.

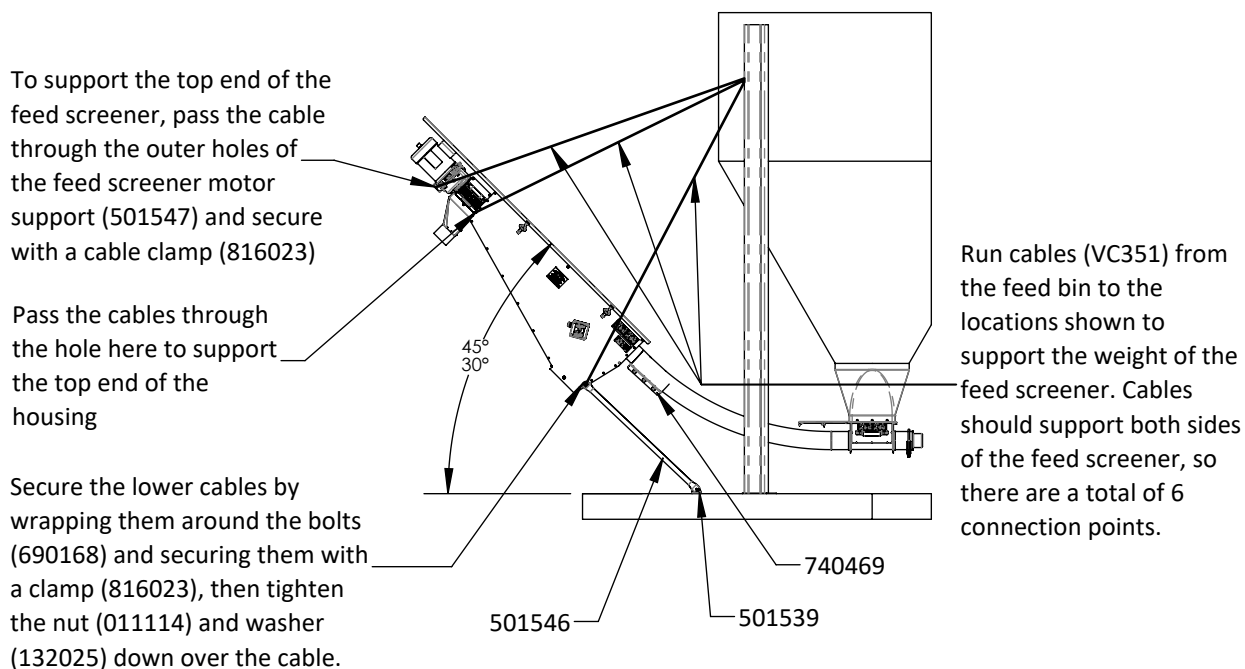


Step 2: Install the boot safety switch (730965) and the safety switch cover (501537). The safety switch can be installed on either side. When installing the safety switch cover, make sure the neoprene seal (730982) is located between the feed screener housing and the cover.

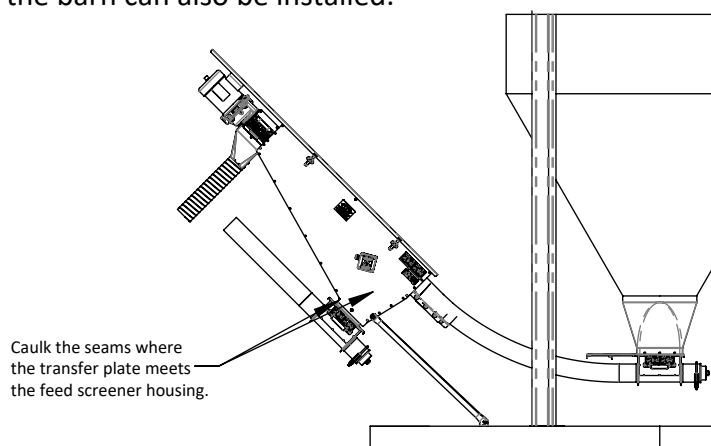


Installation Instructions (continued):

Step 3: Connect the tubing and suspend the feed screener. Connect the tubing and elbows to the boot on the feed bin. Assemble the base supports (501546) and ground bracket (501539). Then use one of the couplers (740469) to connect the feed screener to the tubing. Connect the discharge head to the top end of the feed screener housing. Be sure to add the discharge head spacer (501556) between the housing and the discharge head. At the same time, suspend the feed screener by running cables (VC351) from the feed bin to the locations shown below to support the weight of the feed screener. Install anchors (012002) to secure ground bracket.



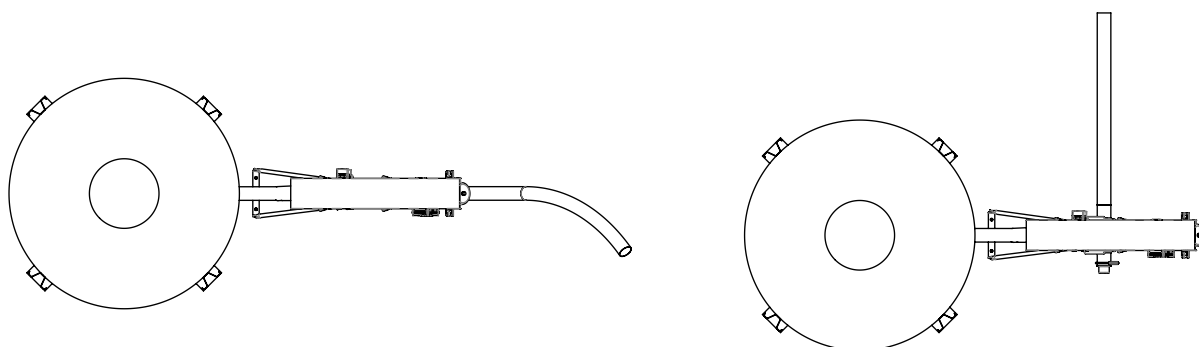
Step 4: Attach the transfer plate (500517) and boot to the feed screener. The tubing for the fill system going into the barn can also be installed.



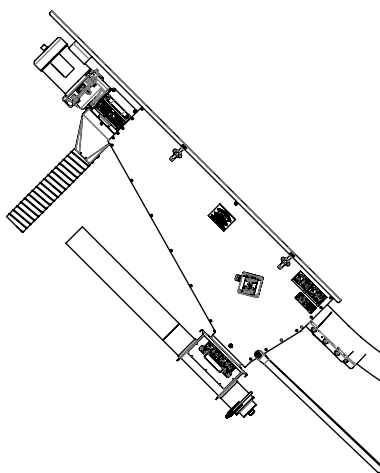
Step 5: Install the auger through the feed screener and feed bin boot (s). See 740 flexible auger manual for auger installation instructions.

Optional set up configurations:

The feed screener may be installed so that the auger tubes of the fill system run parallel to the feed screener or the transfer plate can be rotated by 90° and the auger tubes can run perpendicular to the feed screener.



A 4" flexible rubber downspout (704420) can be added to the discharge head to direct hardware that exits the discharge head.

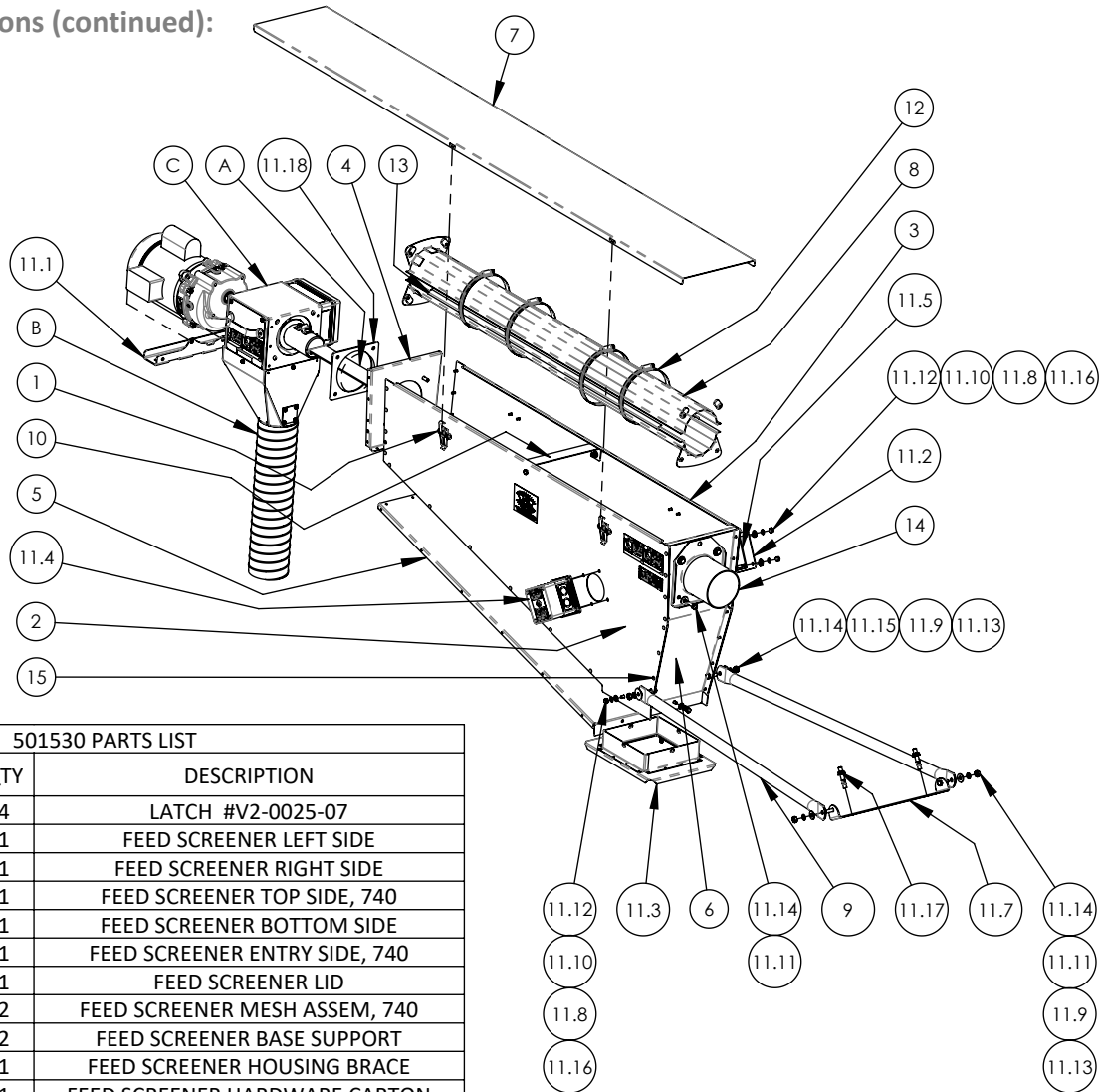


Maintenance & Operating Recommendations:

- Always use proper Lockout/Tagout procedure when working on the feed screener.
- Monthly: open the lid of the feed screener and the access panel of the discharge head. Remove any objects that may have gotten stuck.
- Monthly: grease bearing at the end of each boot.
- After one month of operation: check system for any loose hardware, tighten if necessary.
- Empty the feed from the system if the system is to set for a long period of time.

Installation Instructions (continued):

NOTE: Motor, gearbox, and discharge head shown for reference.



501530 PARTS LIST

ITEM #	PART #	QTY	DESCRIPTION
1	00052016	4	LATCH #V2-0025-07
2	501531	1	FEED SCREENER LEFT SIDE
3	501532	1	FEED SCREENER RIGHT SIDE
4	501533	1	FEED SCREENER TOP SIDE, 740
5	501534	1	FEED SCREENER BOTTOM SIDE
6	501535	1	FEED SCREENER ENTRY SIDE, 740
7	501536	1	FEED SCREENER LID
8	501545	2	FEED SCREENER MESH ASSEM, 740
9	501546	2	FEED SCREENER BASE SUPPORT
10	501548	1	FEED SCREENER HOUSING BRACE
11	501549	1	FEED SCREENER HARDWARE CARTON
11.1	501547	1	FEED SCREENER MOTOR SUPPORT
11.2	501537	1	SAFETY SWITCH COVER
11.3	500517	1	TRANSFER PLATE ASSY
11.4	730965	1	BOOT SAFETY SWITCH, ADJUSTABLE
11.5	730982	1	NEOPRENE SEAL, SAFETY SWITCH
11.6	740469	1	COUPLER W/ HRDW, 740
11.7	501539	1	FEED SCREENER GROUND BRACKET
11.8	010251	8	WASHER, LOCK, 1/4"
11.9	010252	4	WASHER, LOCK, 5/16"
11.10	010424	8	WASHER, FLAT, 1/4"
11.11	010426	2	WASHER, FLAT, 5/16"
11.12	010617	8	BOLT, HEX, 1/4-20 X 3/4"
11.13	011114	4	NUT, HEX, HEAVY, 5/16-18
11.14	690168	4	BOLT, HEX, 5/16-18 X 1"
11.15	132025	2	WASHER, FLAT 5/16 X 1-1/4
11.16	010602	8	NUT, HEX, 1/4-20
11.17	012002	2	BOLT, ANCHOR, 3/8-16 X 2-1/4"
11.18	501556	1	DISCHARGE HEAD SPACER, 740
12	501550	4	HOSE CLAMP, 4-6", SS BAND
13	501555	2	FEED SCREENER CLAMP
14	740492	1	TUBE & PORT PLATE, 740
15	954099	47	RIVET, POP, 3/16" X .126" X .250" ZP

OPTIONAL PARTS LIST

ITEM #	PART #	QTY	DESCRIPTION
A	501554	1	FEED SCREENER AGITATOR, 740
B	704420	1	4"ID X 25' PVC FLEXIBLE DOWNSPOUT TUBING
C	740521	1	KIT, STL DH CNTRL 740 1PH OR 3PH APPLICATION
NOT SHOWN	740524	1	KIT, STL DH CNTRL W/RLY 740 1PH APPLICATION
NOT SHOWN	816023	14	CLAMP, FOR 3/16" CABLE, GALV
NOT SHOWN	VC351	50	3/16" GALV 7X7 (PER FOOT)

North America:

Phone: 800.99VALCO (800.998.2526)

Fax: 419.678.2200

Email: sales@val-co.com

990317 [-] 12/1/2023

Page 4

International:

Phone: (+1) 419.678.8731

Fax: (+1) 419.678.2200

Email: intl.sales@val-co.com