



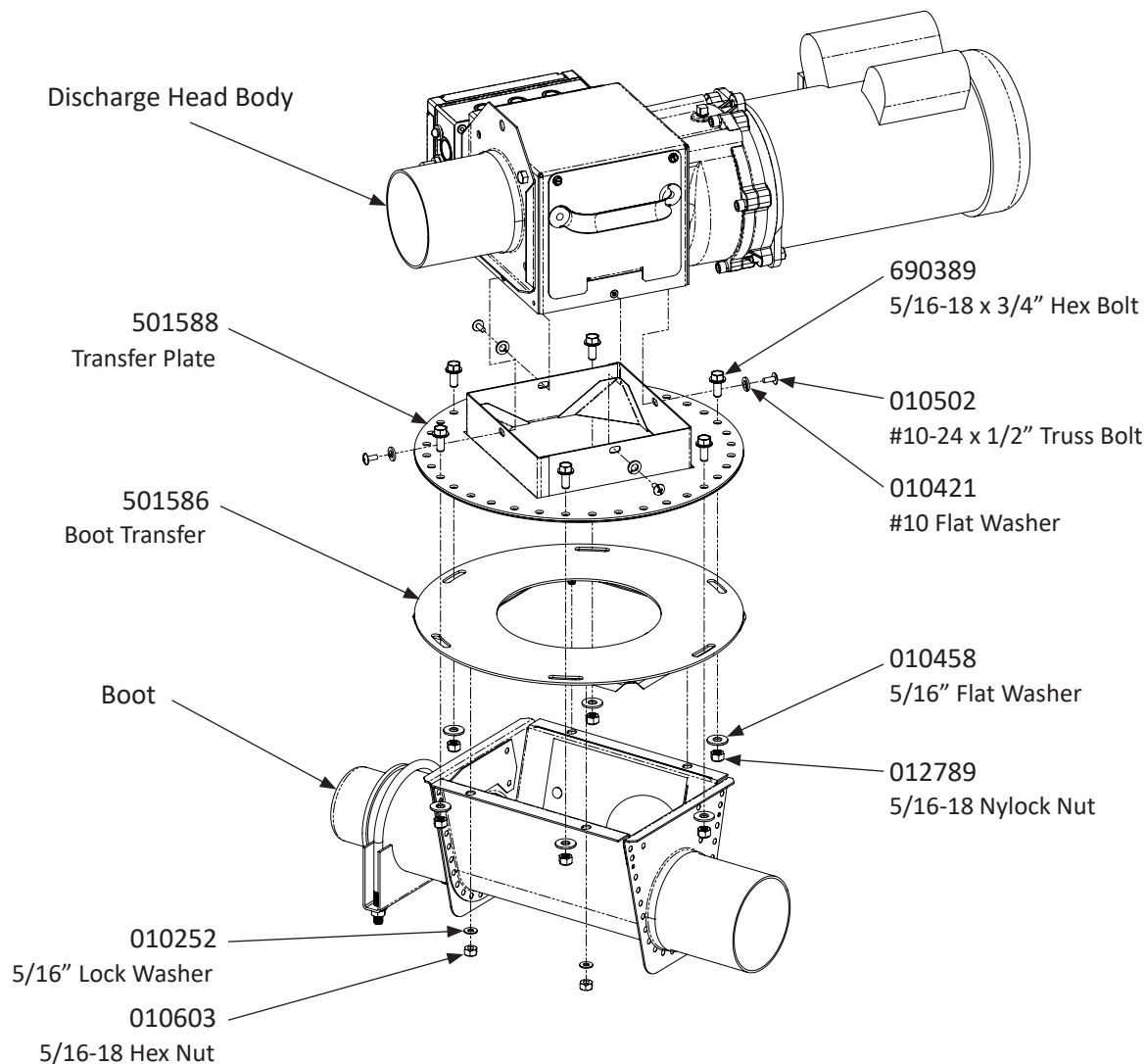
Rotary Flag Joint

501585

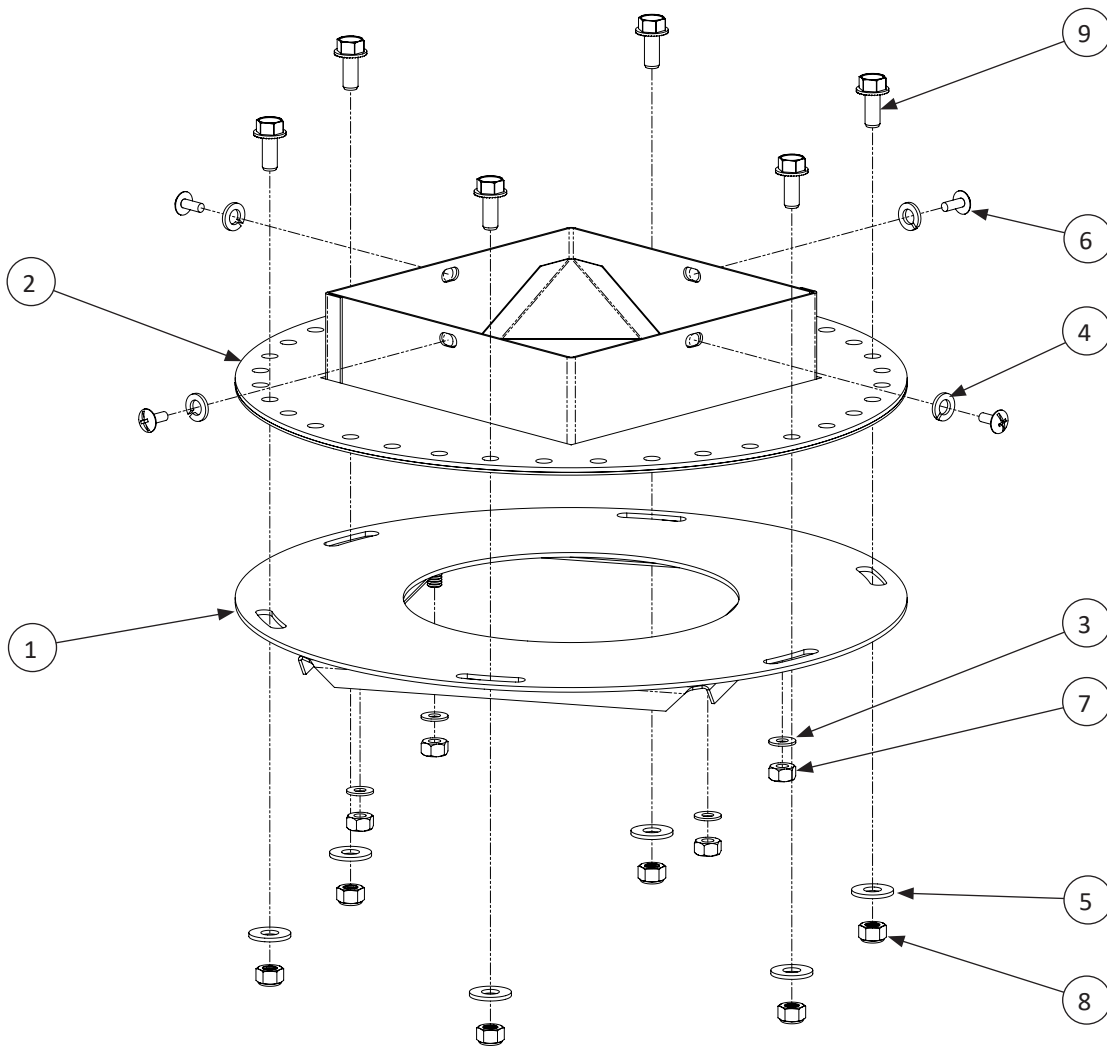
Quicksheet

Rotary Flag Joint - Assembly Instructions

1. Connect the Transfer Plate (501588) to the threaded inserts in the existing Discharge Head Body using (4) #10-24 x 1/2" truss bolts (010502) and (4) #10 x 1/2" flat washers (010421), as supplied in the provided hardware bag (501591). Tighten all hardware.
2. Connect the Boot Transfer (501586) to the existing Boot using (4) 5/16-18 hex nuts (010603) and (4) 5/16" lock washers (010252), as supplied in the provided hardware bag (501591). Tighten all hardware.
3. Connect the Transfer Plate and Discharge Head sub-assembly to the Boot Transfer and Boot sub-assembly using (6) 5/16-18 x 3/4" hex bolts (690389), (6) 5/16" flat washers (010458), and (6) 5/16-18 Nylock nuts (012789), as supplied in the provided hardware bag (501591). Keep hardware loose until desired angle is set, then tighten all hardware to secure installation.



Rotary Flag Joint - Exploded Drawing and Parts List



KEY	PART #	DESCRIPTION	QTY
ROTARY FLAG JOINT (501585)			
1	501586	BOOT TRANSFER	1
2	501588	DISCHARGE HEAD TRANSFER PLATE	1
-	501591	HARDWARE BAG FOR ROTARY FLAG JOINT	1
HARDWARE BAG FOR ROTARY FLAG JOINT (501591)			
3	010252	5/16" LOCK WASHER	4
4	010421	#10 X 1/2" FLAT WASHER	4
5	010458	5/16" FLAT WASHER	6
6	010502	#10-24 X 1/2" TRUSS BOLT	4
7	010603	5/16-18 HEX NUT	4
8	012789	5/16-18 NYLOCK NUT	6
9	690389	5/16-18 X 3/4" HEX BOLT	6

North America:

Phone: 800.99VALCO; 800.998.2526

Fax: 419.678.2200

Email: sales@val-co.com

990392

REV [-]

2

International:

Phone: (+1) 419.678.8731

Fax: (+1) 419.678.2200

Email: intl.sales@val-co.com