

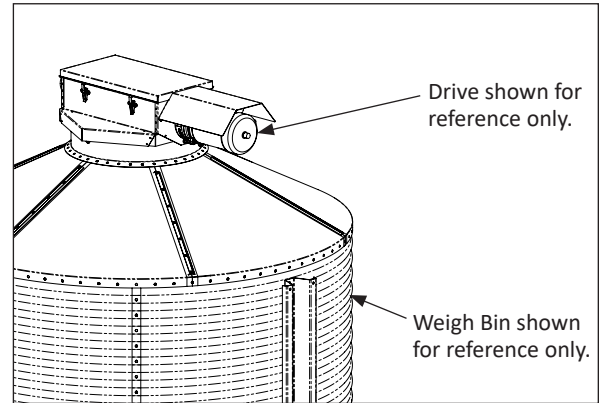


740 Flexible Auger Bin Discharge Cap

506225

Quicksheet

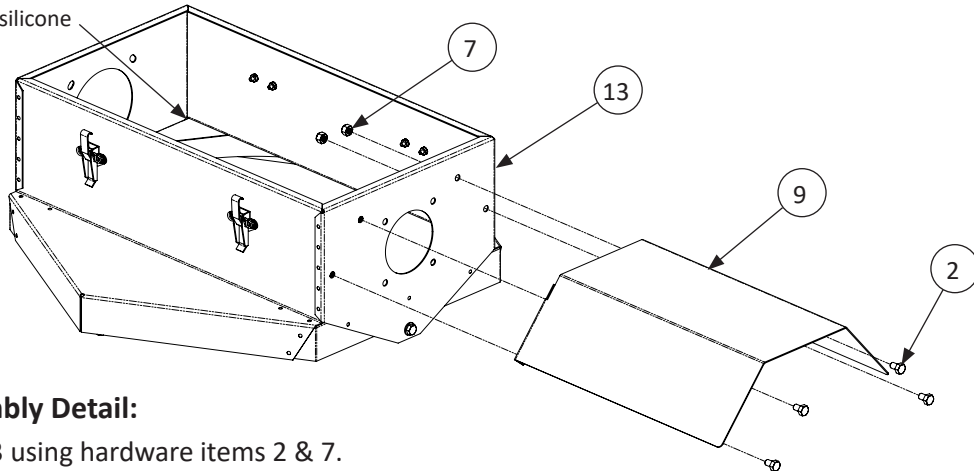
- The Flexible Auger Bin Discharge Cap allows an auger system to fill a feed bin thru the top opening.
- The assembly is weather proof and has a removable lid.
- The auger tube connects to the discharge cap with a port tube, and the auger connects to a drive unit.
- Both the port tube and drive unit must be sized according to the system and ordered separately.



740 Weigh Bin Discharge Cap with Weather Hood - Assembly Instructions

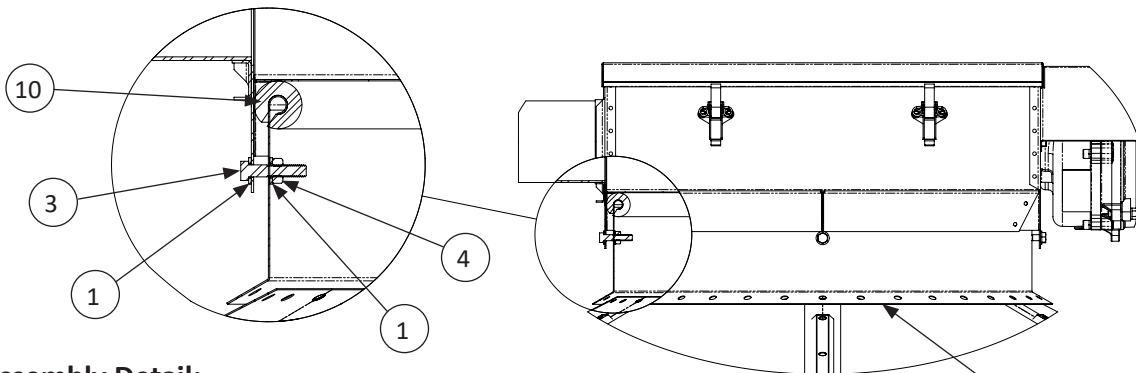
NOTE: See Feed Bin Manual & Flexible Auger Manual for additional assembly instructions and hardware.

Caulk corners w/ waterproof silicone



Weather Hood Assembly Detail:

Fasten item 9 to item 13 using hardware items 2 & 7.

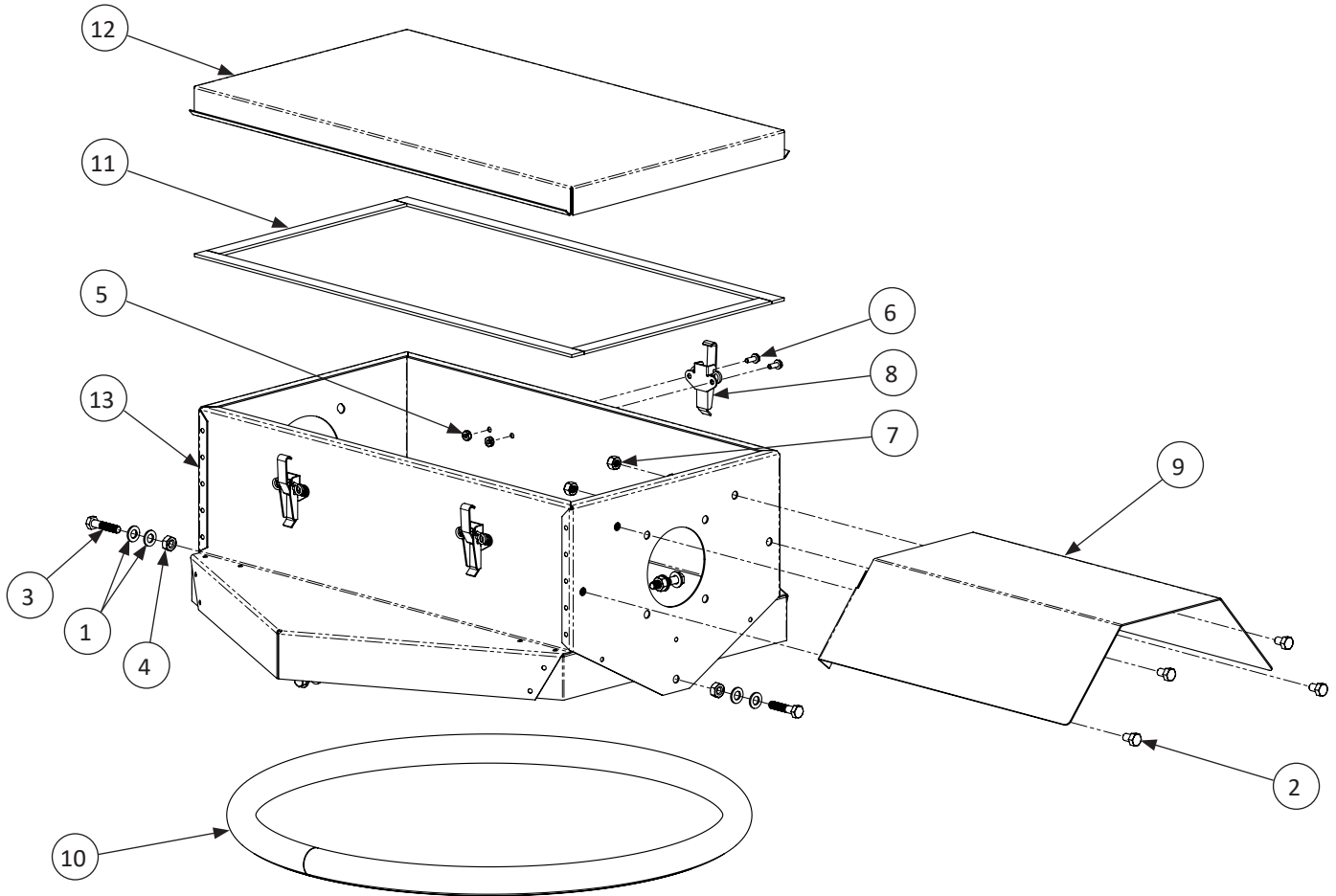


Lid Assembly Detail:

- A) Premark mounting holes of cap housing & drill 3/8" thru lid collar.
- B) Fasten cap housing to lid collar using hardware items 1, 3 & 4.

Lid Collar shown for reference only.

740 Weigh Bin Discharge Cap with Weather Hood - Parts List



KEY	PART #	DESCRIPTION	QTY
740 WEIGH BIN DISCHARGE CAP WITH WEATHER HOOD			
1	010426	5/16" FLAT WASHER	4
2	010640	5/16-18 X 1/2" HEX HEAD BOLT	4
3	010648	5/16-18 X 1-1/2" HEX HEAD CAP SCREW	2
4	011114	5/16-18 HEAVY HEX NUT	2
5	012408	10-24 KEP NUT	8
6	012675	10-24 X 1/2" HEX LOCKING SCREW	8
7	012789	5/16-18 NYLOCK NUT	4
8	450409	TENSION LATCH	4
9	500397	WEATHER HOOD	1
10	500486	FOAM, 1/2" ID, 3/8" WIDE, 6' LONG	1
11	500487	WEATHERSTRIP, 1/8" THICK X 3/4" WIDE	5.72
12	500548	LID FOR DISCHARGE CAP	1
13	506226	DISCHARGE CAP HOUSING ASSEMBLY	1

North America:

Phone: 800.99VALCO; 800.998.2526

Fax: 419.678.2200

Email: sales@val-co.com

990391

REV [-]

2

International:

Phone: (+1) 419.678.8731

Fax: (+1) 419.678.2200

Email: intl.sales@val-co.com