



# Manual Slide Valve

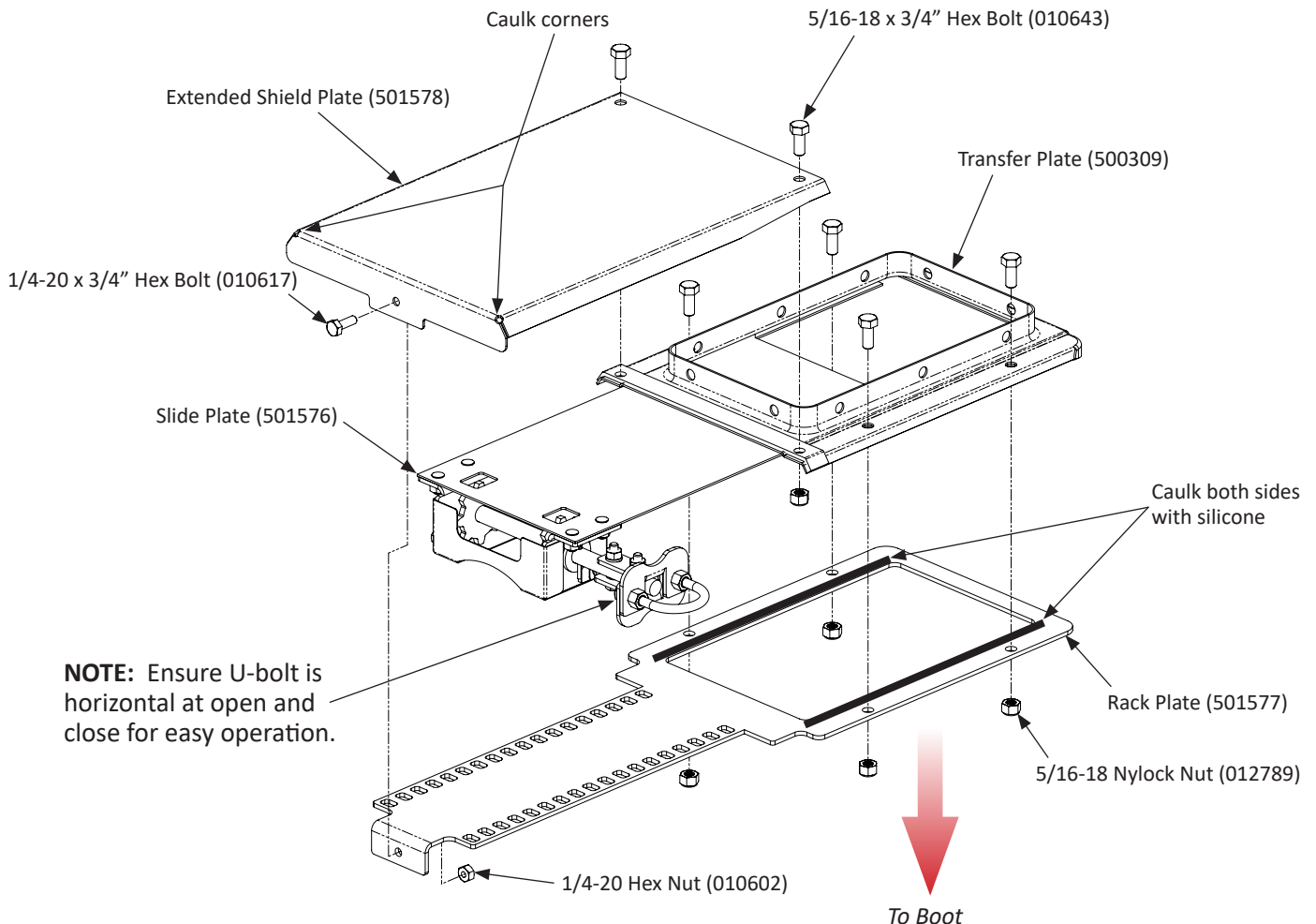
## 501570

### Quicksheet

**NOTE:** Reference **Slide Valve & Hardware Installation Quick Sheet (990172)** for boot and transfer plate installation.

## Manual Slide Valve - Assembly Instructions

The Manual Slide Valve arrives pre-assembled from the factory but must be properly sealed before installation. Disassemble rack plate (501577) from Manual Slide Valve, as shown below. Place rack plate between transfer plate (500309) and boot and caulk on both sides with silicone, as shown below. Reuse hardware removed from rack plate and transfer plate to assemble slide valve to boot, as shown on the next page.



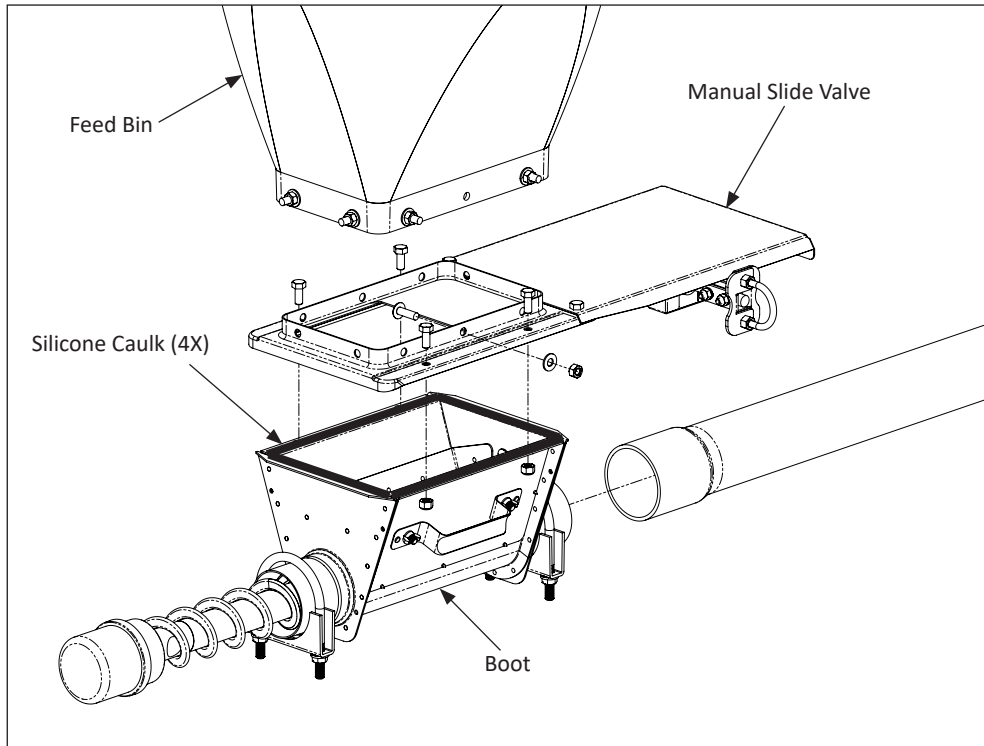
**NOTE:** Gear and loop can be flipped to be operated from opposite side if necessary.

## Caulking Instructions

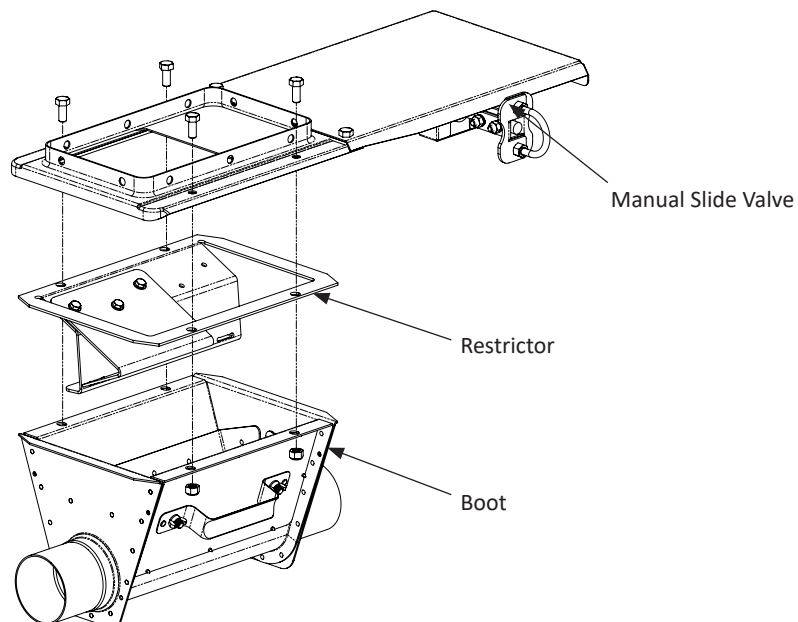
To ensure moisture does not seep inside boot, all joints and hardware holes must be caulked properly.

- Clean the locations where caulking is to be applied.
- Use UV resistant silicone caulk and apply between all mating parts, as shown.
- There must be bead of caulk sealing each hardware hole.

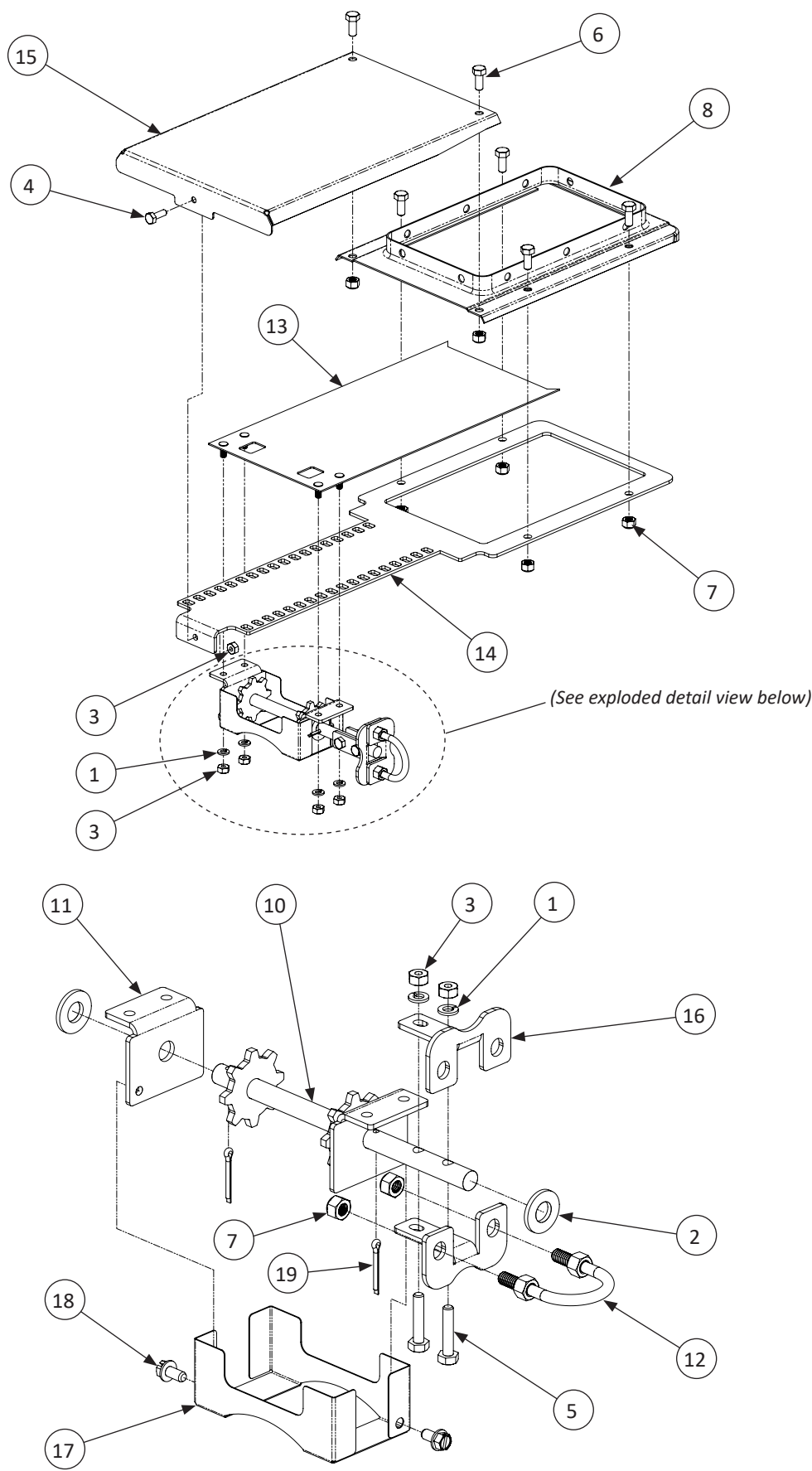
Reference **Feed Bin & Flexible Auger Manuals** for more information.



**NOTE:** If using a restrictor plate (such as 730875), install the restrictor plate between the slide valve and boot.



Manual Slide Valve (501570) - Exploded Drawing



## Manual Slide Valve (501570) - Parts List

| KEY   | PART # | DESCRIPTION                          | QTY |
|---|--------|--------------------------------------|-----|
| <b>MANUAL SLIDE VALVE (501570)</b>  |        |                                      |     |
| 1   | 010251 | 1/4" LOCK WASHER                     | 6   |
| 2   | 010437 | 1/2" FLAT WASHER                     | 2   |
| 3   | 010602 | 1/4-20 HEX NUT                       | 7   |
| 4   | 010617 | 1/4-20 X 3/4" HEX NUT                | 1   |
| 5   | 010621 | 1/4-20 X 1-1/4" HEX BOLT             | 2   |
| 6   | 010643 | 5/16-18 X 3/4" HEX BOLT              | 6   |
| 7   | 012789 | 5/16-18 NYLOCK NUT                   | 8   |
| 8   | 500309 | TRANSFER PLATE ASSEMBLY              | 1   |
| 9   | 500487 | WEATHERSTRIP, 1/8" THICK X 3/4" WIDE | -   |
| 10  | 501571 | GEAR SHAFT WELDMENT                  | 1   |
| 11  | 501574 | BRACKET, SHAFT SUPPORT               | 2   |
| 12  | 501575 | U-BOLT, 5/16-18                      | 1   |
| 13  | 501576 | SLIDE PLATE                          | 1   |
| 14  | 501577 | RACK PLATE                           | 1   |
| 15  | 501578 | EXTENDED SHIELD PLATE                | 1   |
| 16  | 501579 | BRACKET, UBOLT TO SHAFT              | 2   |
| 17  | 501580 | GUARD                                | 1   |
| 18  | 690113 | 1/4-20 X 1/2" SELF-TAPPING HEX SCREW | 2   |
| 19  | 690149 | COTTER PIN, 1/8" X 1"                | 2   |
| <b>HARDWARE BAG, SLIDE VALVE TO UPPER BOOT (501581) (parts not shown)</b> |        |                                      |     |
| -   | 010544 | 5/16-18 X 1" TRUSS BOLT              | 18  |
| -   | 012781 | 5/16-18 HEX NUT                      | 18  |
| -   | 012782 | 5/16" NYLON WASHER                   | 18  |

### North America:

Phone: 800.99VALCO; 800.998.2526

Fax: 419.678.2200

Email: [sales@val-co.com](mailto:sales@val-co.com)

**990379**

**REV [-]**

### International:

Phone: (+1) 419.678.8731

Fax: (+1) 419.678.2200

Email: [intl.sales@val-co.com](mailto:intl.sales@val-co.com)