



Quick Sheet Instructions

Slide Valve and Hardware Installation

Part numbers:

500471 Single Slide Valve

500371 Split Slide Valve

731074 Single Slide Valve, Stainless Steel

Table of Contents

Page 1 - Orientation & Transition Drilling

Page 2 - Caulking Instructions

Page 3 - Hardware Instruction & Operation

Page 4 - Parts List

Overview

The following pages describe instructions for the installation of slide valves for Straight End Boots, Straight Pass-Thru Boots, and 30 Degree Boots. Please read the entire manual to learn about slide valve orientation, hardware orientation, caulking instructions and replacement part numbers. It is very important all directions are followed for proper operation and weather resistance.

Slide Valve Orientation

The slide valve should open in the same direction as the feed flows, to ensure optimal feed flow. As shown in **Figure 1**.

Figure 1

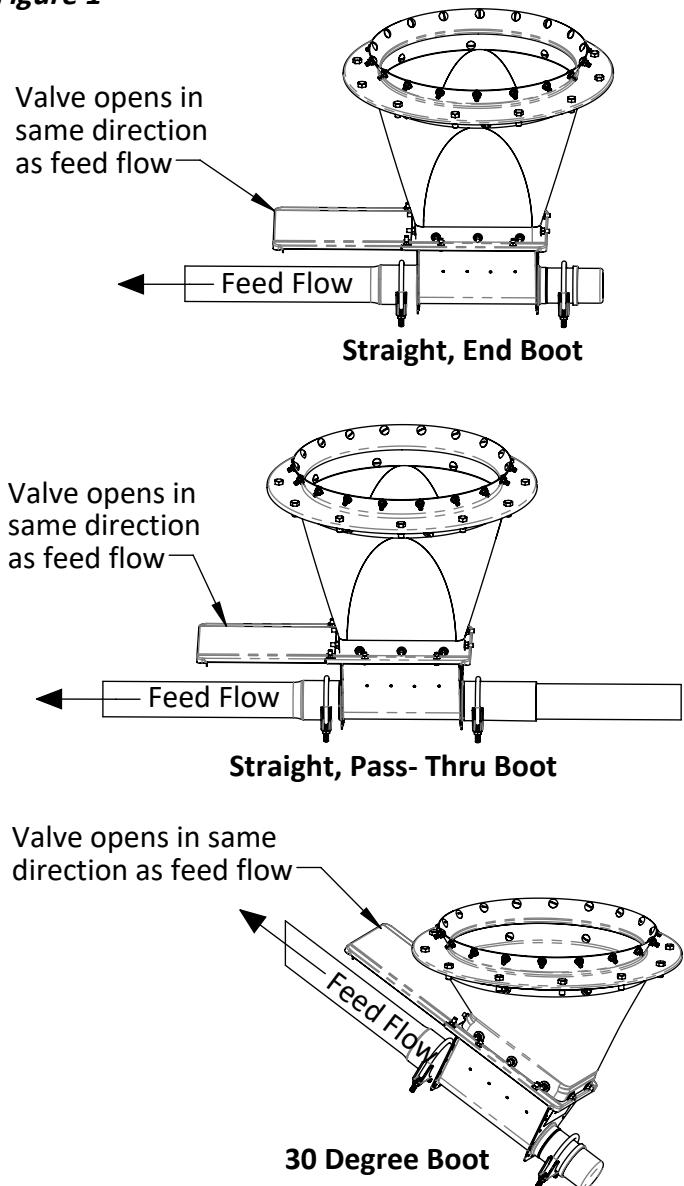
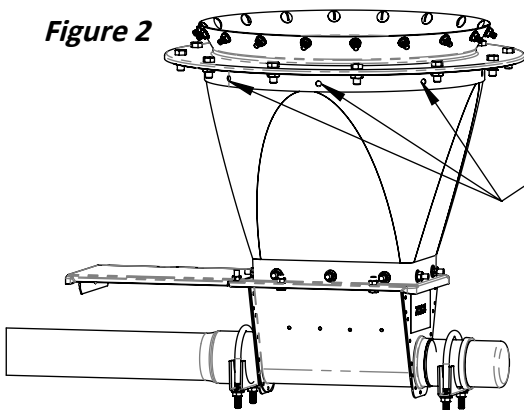


Figure 2



Drill Holes:

Slide the plastic transition into the bottom collar until it seats against the top collar. Make sure the rectangular opening of the plastic transition is pointed in the desired direction auger will go. Use the bottom collar holes as guides to drill 11/32" (8.8 mm) ϕ holes 8X in the upper rim of the plastic transition. See **Figure 2**.

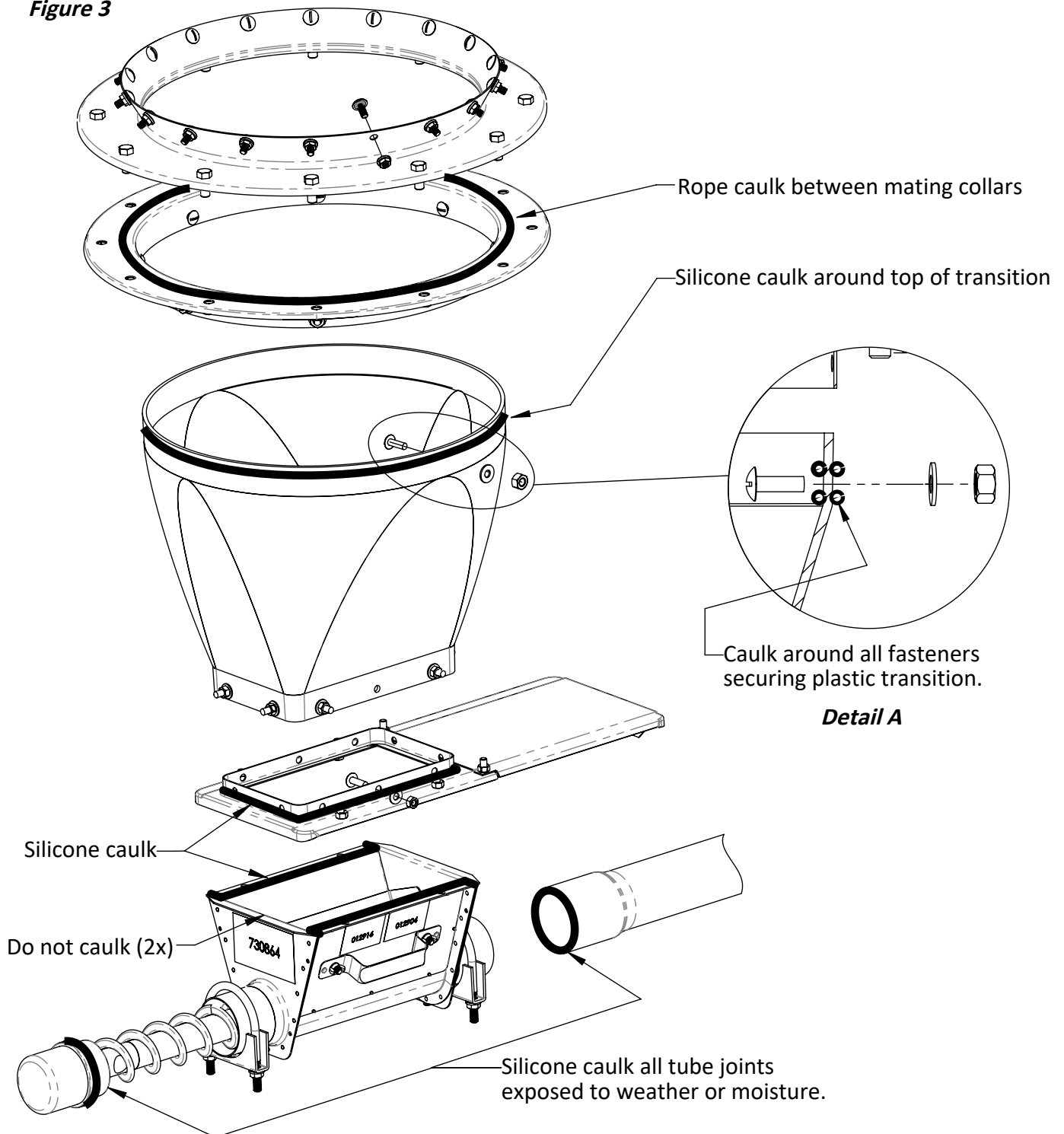
Caulking Instructions

To ensure moisture does not seep inside boot, all joints and hardware holes must be caulked properly.

- Clean the locations where caulking is to be applied.
- Use rope caulk supplied with feed bin between collars.
- Use UV resistant silicone caulk and apply between all mating parts as shown in **Figure 3**.
- There must be bead of caulk sealing each hardware hole as shown in **Detail A**.

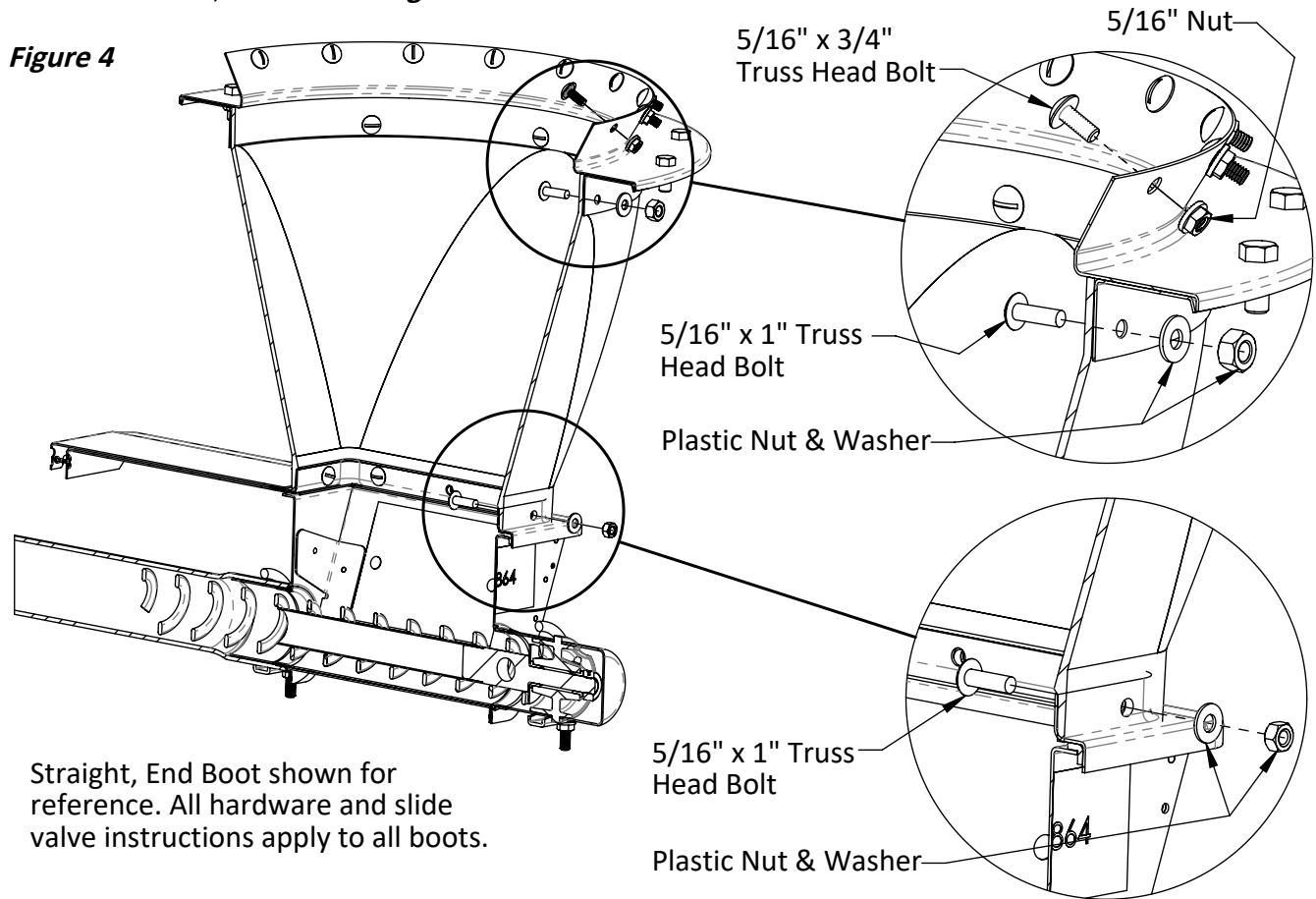
Reference Feed Bin & Flexible Auger Manuals for more information.

Figure 3



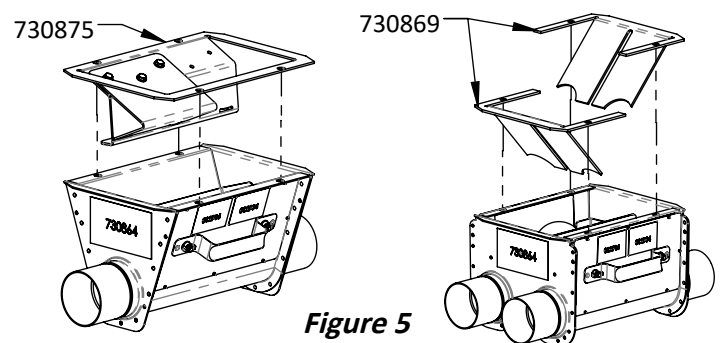
Hardware Instructions

All tapered sections of the feed bin should be secured with round head truss bolts. It is very important to install the round head inside the bin so feed will flow over. This includes the hardware of the collar to the bin, the bottom collar to the boot transition, and the slide valve to the lower boot, as shown in **Figure 4**.



Pass-Thru Systems

A pass-thru bin (a bin with no bearing, that the auger passes thru) must have a restrictor plate installed in the boot, as shown in Figure 5. Do not have more than one bin open at the same time while the auger is running. If more than one slide valve is open at the same time, the auger will be overloaded and could jam. Follow the installation instructions provided with the restrictor plates.

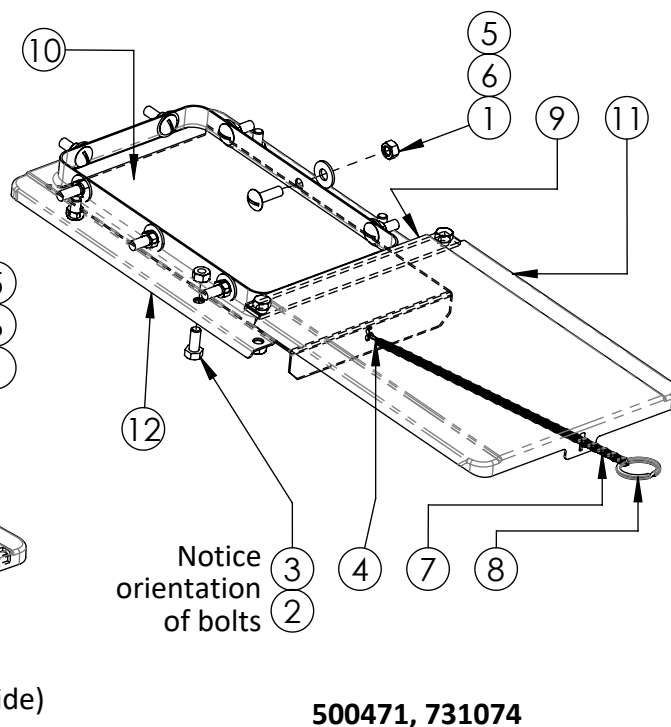
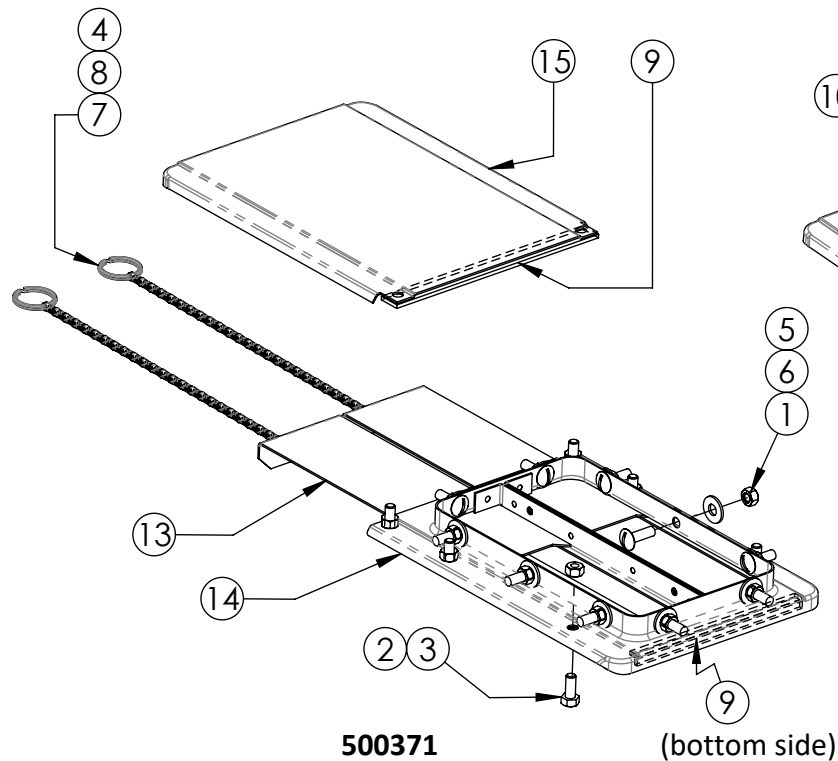


Important Operation Notes

- It is important for NEW auger and tubes to be polished by the moving feed before opening the slide valve the entire way. Otherwise the auger could overload and jam.
- In tandem systems, do not have more than one bin open at the same time while the auger is running. If more than one slide valve is open at the same time, the auger will be overloaded and could jam.
- Do not allow the auger to run empty. Premature wear and damage to components could result.
- Sliding the valve at least once a week will ensure the valve remains operable and free from feed debris.
- Agitator ball included is **ONLY** supposed to be used in feed loads where feed bridging is a problem (hot feed, high moisture, high fat). Remove ball when feed begins to flow freely. **LEAVING BALL INSIDE BIN WILL RESULT IN PREMATURE BOOT WEAR!**

Parts List

Slide Valve Part #			500471	500371	731074
Key	Description	Qty	Part #		
1	5/16" x 1" Truss Head Bolt	18	010544	010544	-
	5/16" x 1" Truss Head Bolt, Stainless Steel	18	-	-	010545
2	5/16" Hex Nut	6	010603	010603	-
	5/16" Hex Nut, Stainless Steel	6	-	-	MH8056
3	5/16" x 3/4" Hex Bolt	6	010643	010643	-
	5/16" x 3/4" Hex Bolt, Stainless Steel	6	-	-	010431
4	7/64" x 3/4" Cotter Pin	1	012660	012660	012660
5	5/16" Nylon Hex Nut	18	012781	012781	012781
6	5/16" Nylon Washer	18	012782	012782	012782
7	12" Zinc Plated Chain	1	500305	500305	500305
8	Chain Ring	1	500306	500306	500306
9	Weather Stripping, per ft.	1.25 ft	500487	500487	500487
10	Single Slide Plate	1	500301	-	-
	Single Slide Plate, Stainless Steel	1	-	-	731071
11	Single Slide Weather Shield	1	500302	-	-
	Single Slide Weather Shield, Stainless Steel	1	-	-	731072
12	Single Transfer Plate	1	500309	-	-
	Single Transfer Plate, Stainless Steel	1	-	-	731070
13	Twin Slide Plate	1	-	500324	-
14	Twin Transfer Plate (contains [2] 500324)	1	-	500374	-
15	Twin Slide Weather Shield	2	-	500587	-



North America:

Phone: 800.99VALCO (800.998.2526)
 Fax: 419.678.2200
 Email: sales@val-co.com

990172 [B] 10/31/24
 Page 4

International:

Phone: (+1) 419.678.8731
 Fax: (+1) 419.678.2200
 Email: intl.sales@val-co.com