



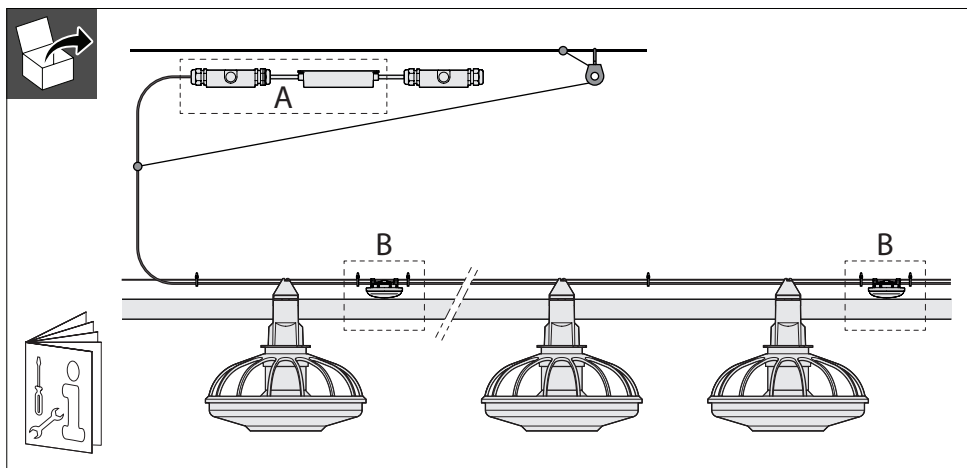
and

**once**

by **Signify**

© 2025 Signify Holding

# Optient System Installation Quick Sheet



- For indoor use only.
- The luminaire shall be installed by a qualified electrician and wired in accordance with the latest IEE electrical regulations or the national requirements.
- Suitable for wet locations.



ATTENTION  
OBSERVE PRECAUTIONS  
FOR HANDLING  
ELECTROSTATIC  
SENSITIVE  
DEVICES

- Sólo para uso en interiores.
- El dispositivo debe ser instalado por un electricista calificado y cableado de acuerdo con últimas regulaciones eléctricas IEE o requisitos nacionales.
- Apto para lugares húmedos.

This device complies with part 15 of the FCC Rules. Operation is subject to the following two conditions:  
(1) This device may not cause harmful interference, and (2) this device must accept any interference received, including interference that may cause undesired operation.

NOTE: This equipment has been tested and found to comply with the limits for a Class A digital device, pursuant to part 15 of the FCC Rules. These limits are designed to provide reasonable protection against harmful interference when the equipment is operated in a commercial environment. This equipment generates, uses, and can radiate radio frequency energy and, if not installed and used in accordance with the instruction manual, may cause harmful interference to radio communications. Operation of this equipment in a residential area is likely to cause harmful interference in which case the user will be required to correct the interference at his own expense.

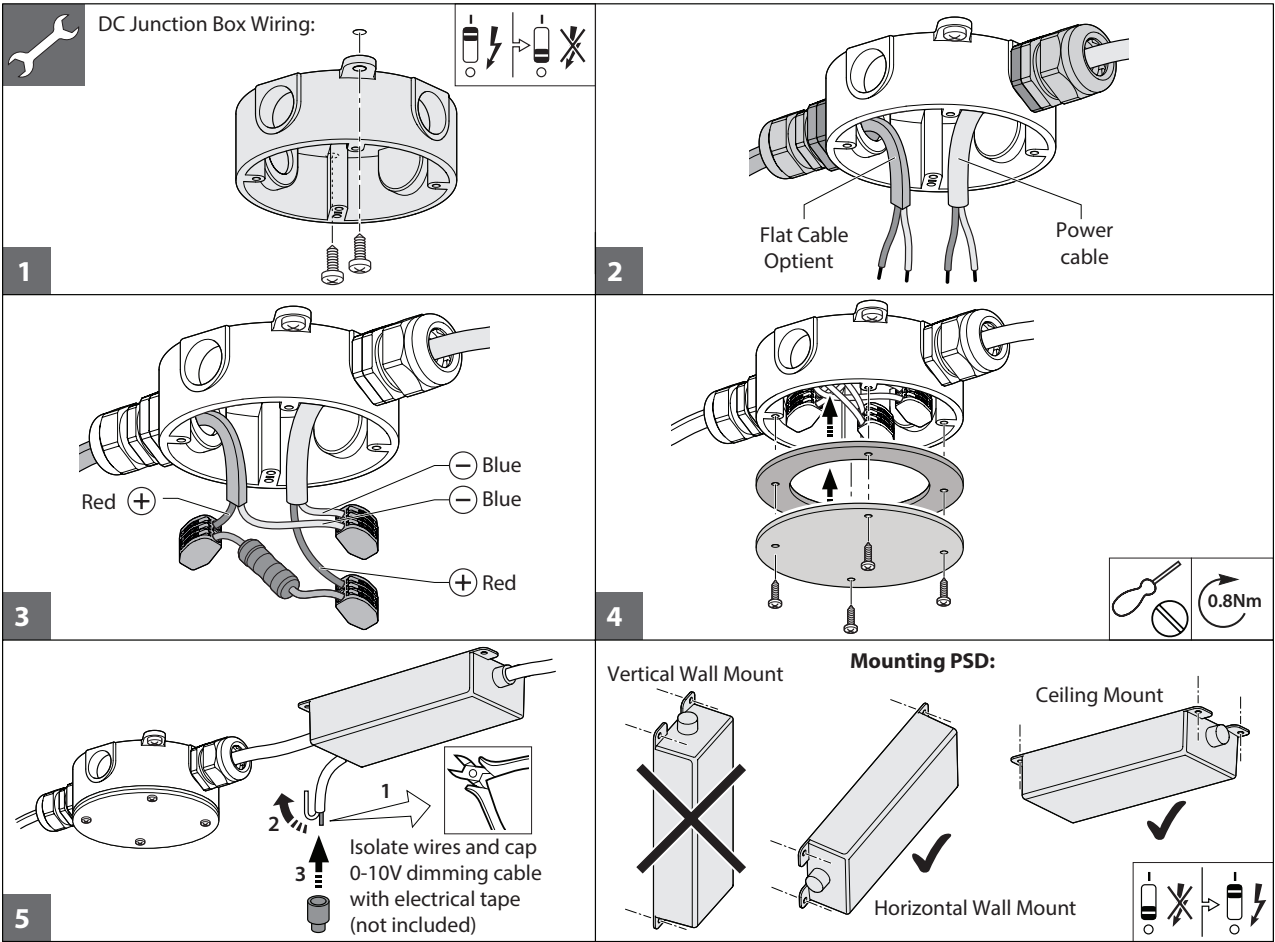
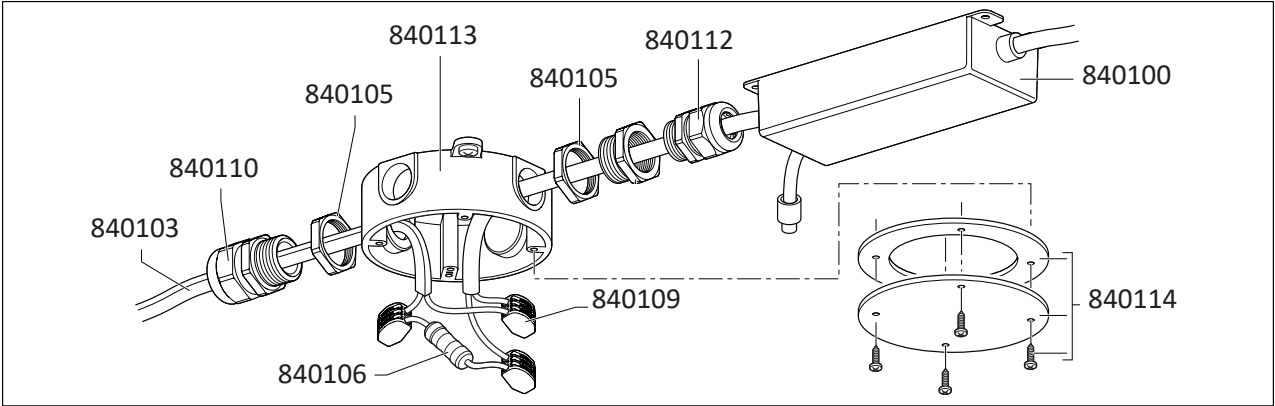
## Contents:

Section A- DC Junction Box Wiring  
Section B- Optient Light Installation  
Flat Cable Termination  
Flat Cable Splice  
Customer Service

990359  
REV [-]

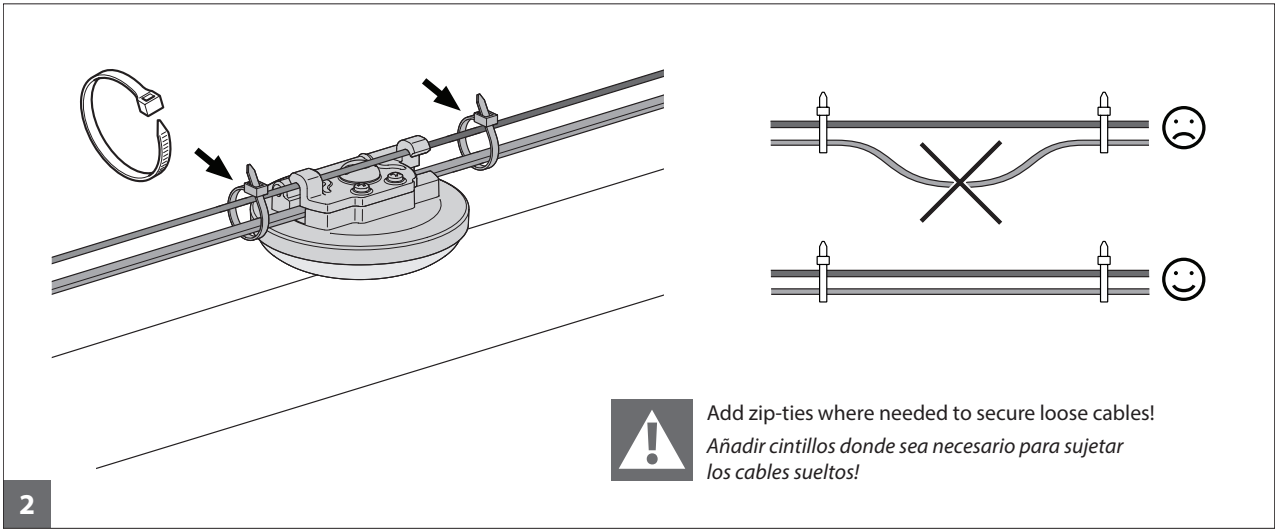
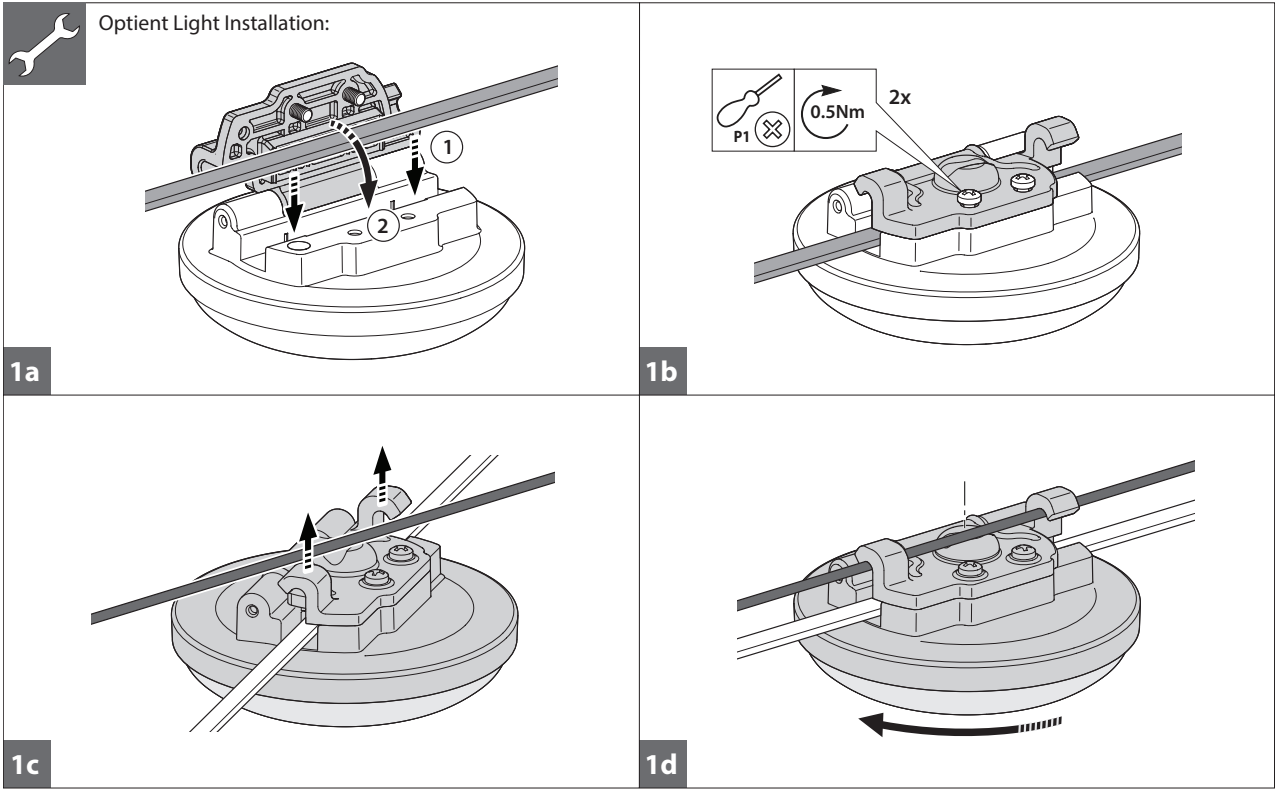
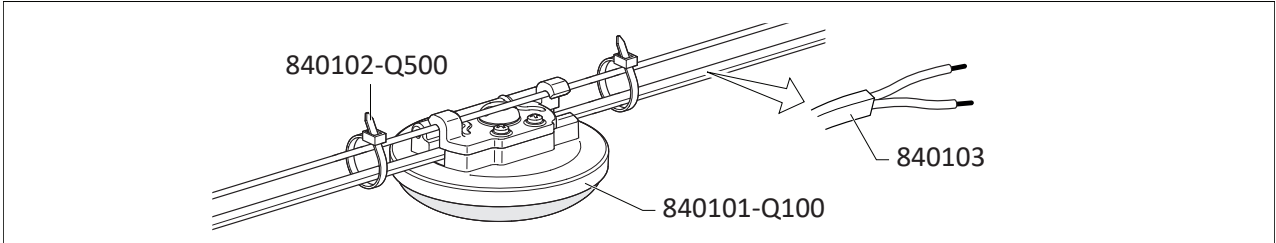
Section A: DC Junction Box Wiring

PART #	DESCRIPTION
840100	PSD, 24VDC 120-277VAC, 150W
840103	FLAT CABLE, OPTIENT, 2 X 18AWG
840105	LOCKNUT, 3/4" NPT, NYLON
840106	INSULATED BEL FUSE, 4A
840109	3 SLOT SPLICE CONNECTOR, 12-24AWG
840110	CORD GRIP, 3/4" NPT, RECTANGULAR SLOT
840112	CORD GRIP, 1/2" NPT, 0.17-0.45" DIA
840113	JUNCTION BOX, 3/4" NPT W/ ACCESSORIES
840114	JUNCTION BOX COVER, CENTER KNOCKOUT

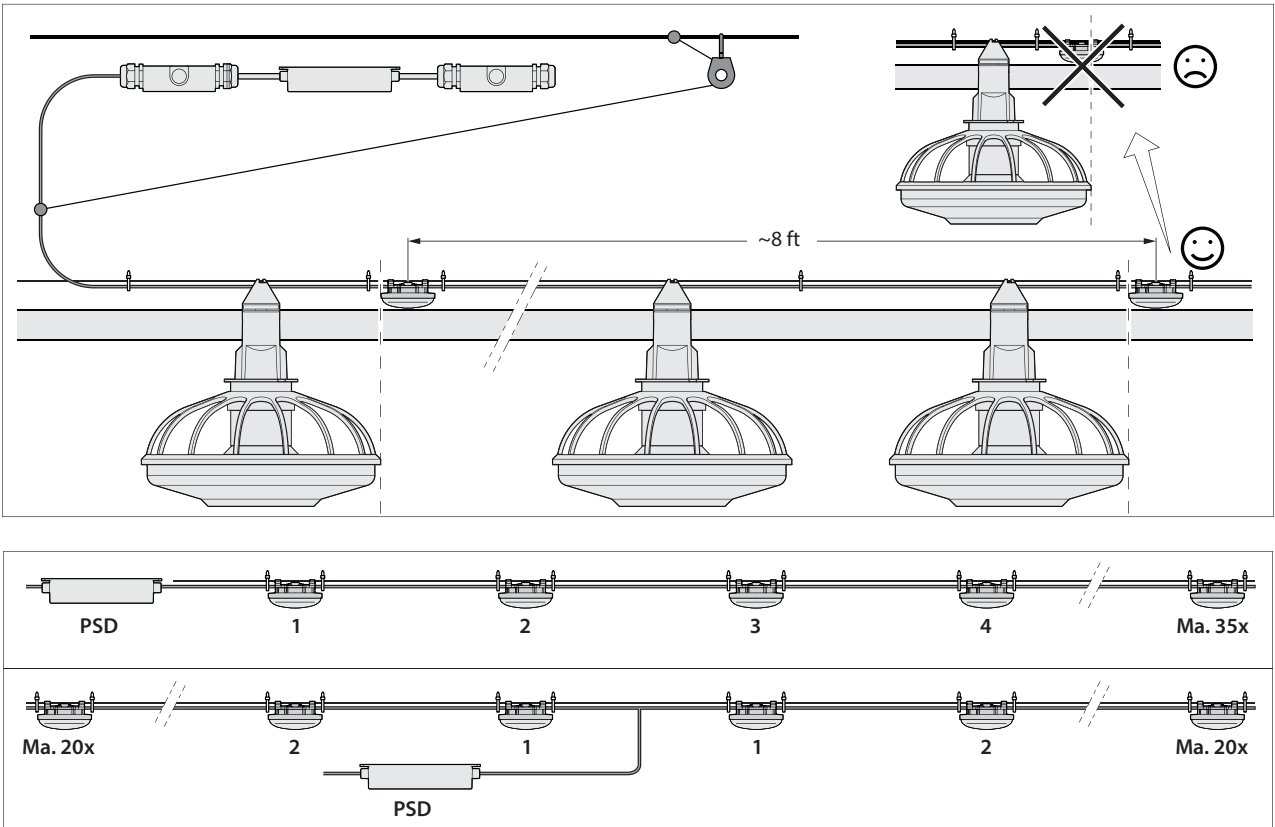


Section B: Optient Light Installation

PART #	DESCRIPTION
840101-Q100	OPTIENT 220 24VDC 5000K
840102-Q500	CABLE TIE, 4"
840103	FLAT CABLE, OPTIENT, 2 X 18AWG

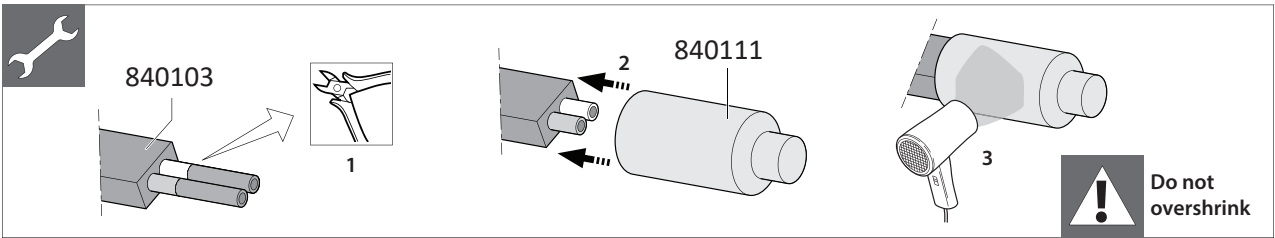


Section B: Optient Light Installation - continued



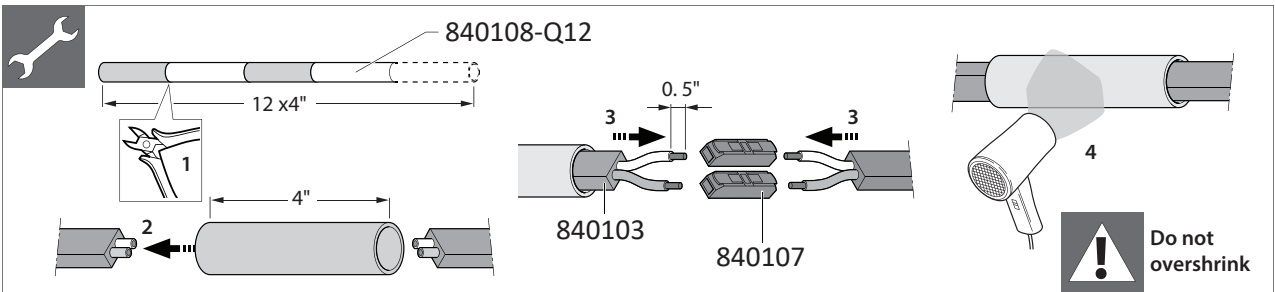
Flat Cable Termination:

PART #	DESCRIPTION
840103	FLAT CABLE, OPTIENT, 2 X 18AWG
840111	HEATSHRINK ENCAP W/ EXPOXY 3/8" X 1.225"



Flat Cable Splice:

PART #	DESCRIPTION
840103	FLAT CABLE, OPTIENT, 2 X 18AWG
840107	INLINE SPLICE CONNECTOR, 12-20AWG
840108-Q12	HEATSHRINK SPLICE W/ EPOXY, 0.7" X 4'



Customer Service

Dealer Name: \_\_\_\_\_

Street / PO Box \_\_\_\_\_

City \_\_\_\_\_

State / Province \_\_\_\_\_

Zip / Postal \_\_\_\_\_

Phone \_\_\_\_\_

Fax \_\_\_\_\_

E-mail \_\_\_\_\_

Website \_\_\_\_\_

**Customer Service**  
210 E. Main Street  
Coldwater, OH 45828  
800.998.2526



**North America:**

Phone: 800.99VALCO (800.998.2526)  
Fax: 419.678.2200  
Email: [sales@val-co.com](mailto:sales@val-co.com)

**International:**

Phone: (+1) 419.678.8731  
Fax: (+1) 419.678.2200  
Email: [intl.sales@val-co.com](mailto:intl.sales@val-co.com)