

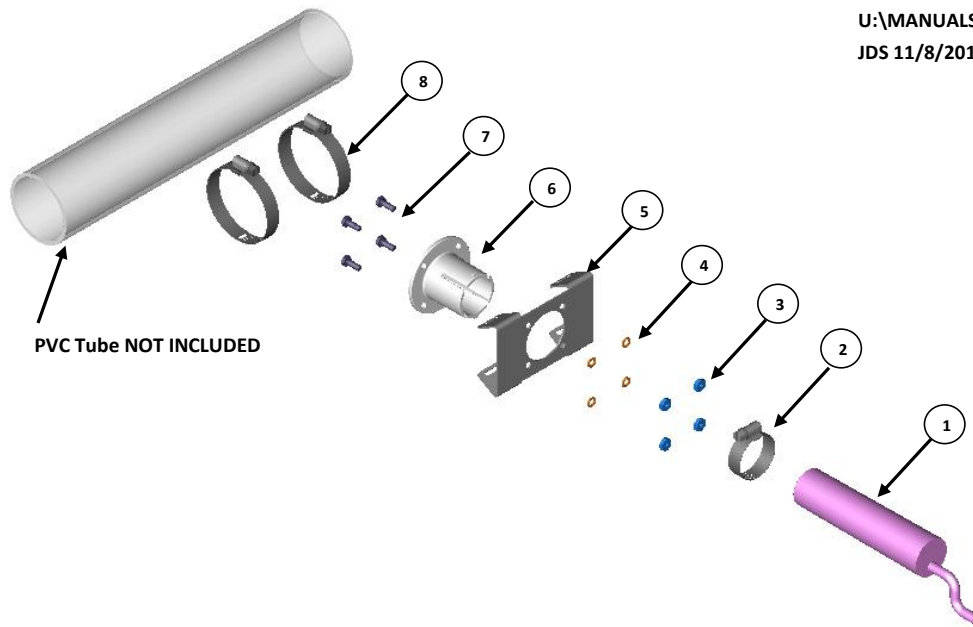


# Quick Sheet Instructions

## 780350 –Tube Mounted Prox Switch

U:\MANUALS\990000\990011

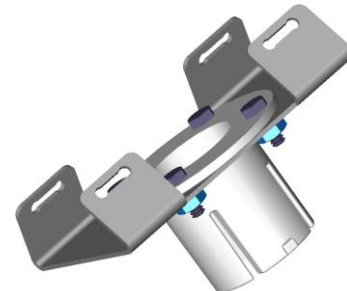
JDS 11/8/2010



### Proximity Sensor Mounting

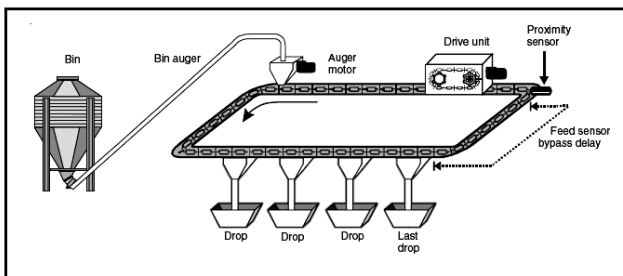
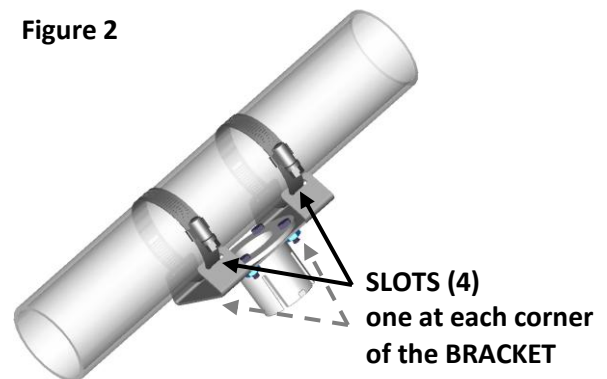
1. Place the Proximity Sensor BASE (#780055) through the back side of the Mounting BRACKET (#780048) and secure together using the #10-24 Hex Bolts (4), #10 SS Medium Split Lockwasher and #10-24 SS Machine Screw Nut. *Heads should be on the inside of mounting bracket and washer and nut to the outside as figure 1 to the right shows.*

Figure 1

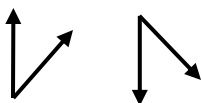


2. Slide the 2-1/2" Hose Clamps (#780122) through the Proximity Sensor Mounting BRACKET (#780048) slots to a CLEAR section of PVC tubing (as shown in Figure 2 to the left). (So not tighten at this time – position the proximity switch after the last drop tube and before the Chain Disk Feed System drive unit as shown in drawing below).

Figure 2



- Adjust the mounting bracket so the proximity sensor will sit at a 45 degree angle from top or bottom and tighten the (#780122) 2-1/2" Hose Clamps.



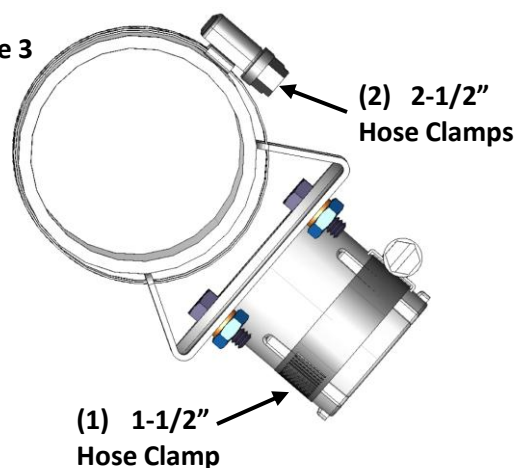
- Place the (# 1-1/2" hose clamp over the top of the proximity sensor base *as shown in Figure 3 to the right and do not tighten until you have inserted the proximity sensor*).

- Position the Proximity Sensor inside the Proximity Sensor BASE making sure the Proximity Sensor is **touching** the clear PVC tube *as shown in Figure 4 to the right*.

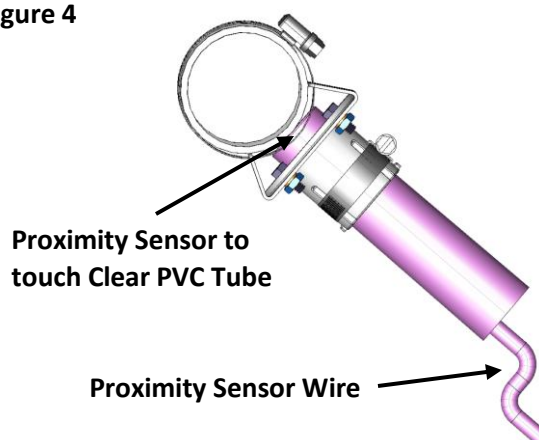
- Tighten the 1-1/2" hose clamp over the proximity sensor and proximity sensor base.

- Attach the Proximity Sensor wire to the Feed Control as instructed in the Feed Control manual.

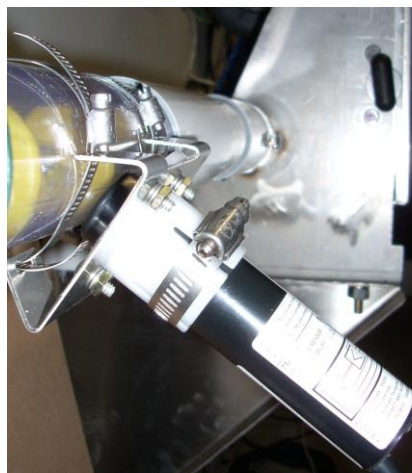
**Figure 3**



**Figure 4**



KEY#	PART #	DESCRIPTION	QTY
1	750418	Switch, Proximity (220 Volt)	1
2	730282	1-1/2" SS Hose Clamp	1
3	012686	#10-24 SS Machine Screw Nut	4
4	012687	#10 SS Medium Split Lockwasher	4
5	780048	BRACKET, Proximity Mounting	1
6	780055	BASE, Switch Mounting w/ hole	1
7	780275	#10-24 x 1/2" SS Hex Bolt	4
8	780122	2-1/2" SS Tube Clamp	2



**North America:**

Phone: 800.99VALCO (800.998.2526)

Fax: 419.678.2200

Email: [sales@val-co.com](mailto:sales@val-co.com)



**International:**

Phone: (+1) 419.678.8731

Fax: (+1) 419.678.2200

Email: [intl.sales@val-co.com](mailto:intl.sales@val-co.com)